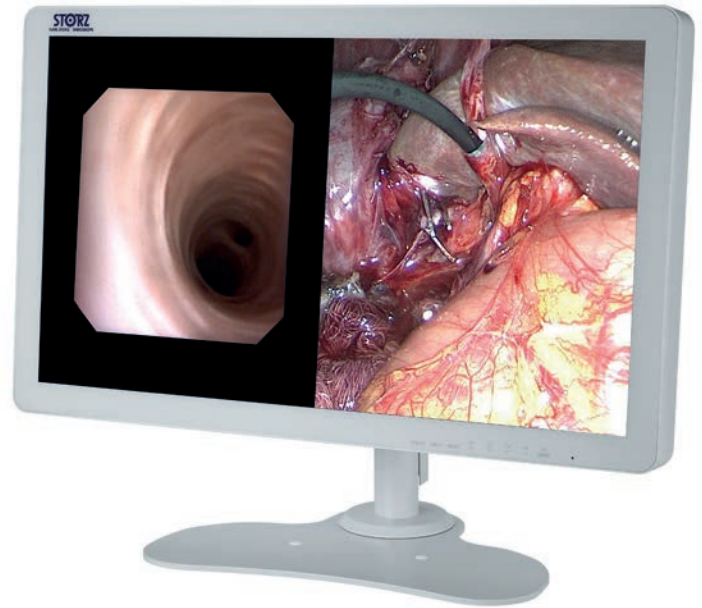


# 27-INCH FULL HD WIDESCREEN SURGICAL MONITOR

## HIGHLIGHTS

The TM220 surgical monitor is the ideal high-definition surgical display solution for your video needs. This monitor not only offers a sleek, bright image, it also provides versatility in viewing options.

- Fully flat design for safety and hygiene protects against splashes
- High brightness with an energy-efficient LED backlight
- View multiple signals on one screen with PoP (Picture-out-Picture) and PiP (Picture-in-Picture) functionality
- Adjust screens individually when displaying two signal sources side by side on the same screen



## HARDWARE

FEATURE	DETAIL	ADDITIONAL NOTES
Panel	Type	Color (IPS)
	Backlight	LED
	Size	68.6 cm / 27.0"
	Native Resolution	1920 x 1080 (16:9 aspect ratio)
	Viewable Image Size (H x V)	598 x 336 mm
	Pixel Pitch	0.311 x 0.311 mm
	Display Colors	10-bit colors (SDI) : 1.07 billion (maximum) colors 8-bit colors: 16.77 million colors
	Viewing Angles (H / V, typical)	178° / 178°
	Brightness (typical)	900 cd/m <sup>2</sup>
	Contrast Ratio (typical)	1000
Video Signals	Response Time (typical)	14 ms (on / off)
	Input Terminals	BNC (3G-SDI), DVI-D x 2 (HDCP 1.4), D-Sub 15 pin (mini), S-Video, BNC (Composite)
	Output Terminals	BNC (3G-SDI), DVI-D, S-Video, BNC (Composite)
	Digital Scanning Frequency (H / V)	15 - 75 kHz / 24 - 60 Hz
	Analog Scanning Frequency (H / V)	15 - 80 kHz / 24 - 85 Hz
	Sync Formats	Separate, Composite, Sync on green

Please note that product details are subject to change without prior notice.  
For the most up-to-date product information, refer to the KARL STORZ website ([www.karlstorz.com](http://www.karlstorz.com)).

# 27-INCH FULL HD WIDESCREEN SURGICAL MONITOR

### HARDWARE

FEATURE	DETAIL	ADDITIONAL NOTES
Power	Power Requirements	AC 100 - 240 V: 50 / 60 Hz
	Maximum Power Consumption	79 W
Physical Specifications	Net Weight (Without Stand)	8.5 kg
	Hole Spacing (VESA Standard)	100 x 100 mm, M4, depth 5 - 9 mm
	Dimensions (net)	660 mm (W) x 400 mm (H) x 87 mm (D)
Environmental Requirements	Degree of Protection	IP45 (Front), IP32 (Rear)
Certifications & Standards	CE (Medical Device Directive), EN60601-1, ANSI/AAMI ES60601-1, CSA C22.2 No. 601-1, IEC60601-1, VCCI-A, FCC-A, CAN ICES-3(A), RCM, RoHS, China RoHS, WEEE, CCC, EAC, BIS	
FDA	Class I	

It is recommended to check the suitability of the product for the intended procedure prior to use.  
Please note that the described products in this medium may not be available yet in all countries due to different regulatory requirements.

KARL STORZ SE & Co. KG  
Dr.-Karl-Storz-Straße 34, 78532 Tuttlingen/Germany  
Postbox 230, 78503 Tuttlingen/Germany  
Phone: +49 (0)7461 708-0  
Fax: +49 (0)7461 708-105  
E-Mail: [info@karlstorz.com](mailto:info@karlstorz.com)  
[www.karlstorz.com](http://www.karlstorz.com)



KARL STORZ Endoscopy-America, Inc.  
2151 East Grand Avenue  
El Segundo, CA 90245-5017, USA  
Phone: +1 424 218-8100  
Phone toll free: 800 421-0837 (US only)  
Fax: +1 424 218-8525  
Fax toll free: 800 321-1304 (US only)  
E-Mail: [communications@karlstorz.com](mailto:communications@karlstorz.com)