

KARL STORZ OFFICE1

ENT Examination Room

You define the requirements –
we configure the solution



OFFICE
1

STORZ
KARL STORZ – ENDOSKOPE



Contact Information

Your contact data				Will be completed by KARL STORZ	
Title				Project no.	
First name				OR1™ Oppo-Nr.	
Last name				Date	
Gender	Male	Female	Other	Contact information – Person	
Practice/Clinic					
Street					
Zip code					
Town/city					
Country					
Phone					
Email					



ENT Examination Unit

Suction required?	Yes	No	Integrated	Notes
	External pump	Single-use bag system	Footswitch	
Compressed air	Yes	No	Internal	
Integrated LED light sources	Yes	No	Qty	
Preheating quiver	Yes	No	Qty	
Glass jars for disinfectants	Yes	No	Qty	
Water separation system	Yes	No		
Thermal disinfection	Yes	No		
Ear irrigation	Yes	No		
Water connection	Yes	No		
Wastewater tank	Yes	No		
External freshwater tank	Yes	No		
External wastewater tank	Yes	No		
Mirror reheater	Yes	No		
Mirror preheater	Yes	No		
Integrated camera cable	Yes	No		



Instruments and Storage Cabinets

Furniture on both sides?	Yes	No, left only	No, right only		
Washbasins	Yes, integrated on the unclean side		Yes, integrated in room		No, already available
Wall cabinets	Yes	No			
Monitor housing	Yes	No			
Special cabinets	PC	Stroboscopy	Light source	Suction pump	Other equipment
Workstation	Yes, integrated on the unclean side		Yes, integrated in room		No, already available
Dispenser for soap	Yes	Mounted version	Mobile version	Integrated in cabinet	No
Dispenser for disinfectants	Yes	Mounted version	Mobile version	Integrated in cabinet	No
Dispenser for gloves	Yes	Mounted version	Mobile version	Integrated in cabinet	No
Dispenser for paper towels	Yes	Mounted version	Mobile version	Integrated in cabinet	No



Endoscopy, Documentation and Imaging

Do you require ENT instruments?	Instruments	Yes	No	Notes
	Flexible endoscopes	Yes	No	
	Rigid endoscopes	Yes	No	
	Other instruments			
Do you require monitors?	Yes	Size: (between 24" and 55"):		Qty of monitors/Notes
	No			
	No, already available			
Do you require a camera?	Yes			Notes
	No			
	No, already available			
Are you interested in a documentation system?	Yes			
	No			
	No, already available			
Are you interested in a video concept?	Yes			
	No			
	No, already available			
Do you require stroboscopy?	Yes			
	No			
	No, already available			



Microscope

Do you require a microscope?	Yes		Notes
	Wall mounting	Ceiling mounting	
	Mounted to the unit	Rollable	
	3-way changeover	5-way changeover	
	Integrated HD camera	Beam splitter required	
	No		
	No, already available		



Treatment Chair

Do you require a treatment chair?	Yes		Notes
	No		
	No, already available		
	Electric backrest and footrest control		
	Max. load 200 kg		
	Max. load 150 kg		
	Foot control		
	Backrest with integrated control		
	Electric control of upwards/downwards movement		
	Programmable positions		
	Electric backrest adjustment		
	Memory functions		
	Color:		



Doctor's stool

Do you require a doctor's stool?	Yes		Notes
	No		
	No, already available		
	Armrest		
	Height adjustment by hand		
	Height adjustment by foot		
	Color:		



Planning and Installation

	Preferred date for first offer		Notes
	Preferred date for first design/layout		
	Preferred date for delivery		
	Preferred date for installation		
	Preferred date for completion		
	No		

Additional Information

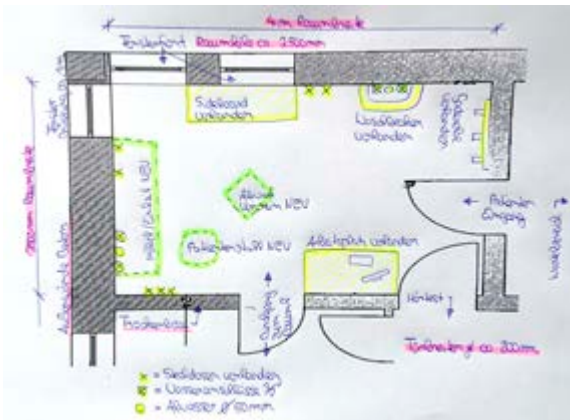
Are you interested in a service package?	Yes	No
Are you interested in financing?	Yes	No

Floor Plan

Number of rooms:

Room size in mm	Length:	Width:	Height:	Notes
Room conditions	New room	Existing room	Renovated room	

Example:



Wastewater connection:

Examination unit:

Height of the wastewater connection in mm	
Diameter of wastewater connection	40 mm 50 mm

Washbasin:

Height of the wastewater connection in mm	
Diameter of wastewater connection	40 mm 50 mm

Notes:

Freshwater connection:

Examination unit:

Height of the freshwater connection in mm	
Diameter of freshwater connection	1/2" 3/8"

Washbasin:

Height of the freshwater connection in mm	
Diameter of freshwater connection	1/2" 3/8"

Notes:

Additional information:

Position and height of window
Position and height of doors
Position and number of sockets
Notes:

KARL STORZ OFFICE1 Contact

Thank you for your information. Providing as many details as possible helps us to prepare a more specific initial quote for your examination unit. Should you have any questions regarding your answers to the questionnaire or any questions in general, please contact:

More than
75
Years

*Shaping the Future
of Endoscopy with you*

STORZ
KARL STORZ—ENDOSKOPE

THE DIAMOND STANDARD

KARL STORZ SE & Co. KG
Dr.-Karl-Storz-Straße 34, 78532 Tuttlingen/Germany
Postbox 230, 78503 Tuttlingen/Germany
Phone: +49 7461 708-0
Fax: +49 7461 708-105
E-Mail: info@karlstorz.com
www.karlstorz.com

