

Bipolar Resection Solutions

Any Patient, Any Pathology, Any Site of Care



Bipolar Resection:

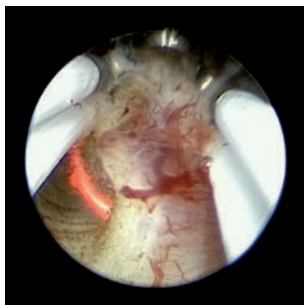
Intrauterine high frequency surgery – safer and more effective

Bipolar resection can be considered the gold standard procedure in the field of operative hysteroscopy. The current is restricted to the area between the two distal electrode loops under the visual control of the surgeon. The use of saline solution in bipolar resection allows for higher absorption limits as compared to hypotonic solutions which makes bipolar energy a safer option for optimal patient care.

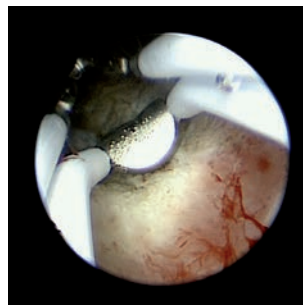


Benefits

- For patient safety, the current is not returned via the sheath
- Precise energy delivery at the electrode tip for the least amount of energy dispersal and the greatest amount of control
- The bipolar working element can be used with all KARL STORZ standard resectoscope sheaths and telescopes
→ Allows inexpensive system changeover from unipolar to bipolar
- Available in 7 mm (22 Fr.) and 8.5 mm (26 Fr.) sizes



Bipolar resection of intrauterine tissue using a cutting loop



Bipolar resection of intrauterine tissue using a coagulation electrode

UH400 Surgical Generator

The high-end high frequency unit from KARL STORZ offers great user comfort and intuitive control. The 9" color touch screen displays procedures for all areas of application according to the needs of the user. A footswitch allows settings to be changed during surgery directly from the sterile area. Alternatively, two sockets with separate instruments can be controlled via a footswitch. The maximum power of 400 Watt (unipolar and bipolar) is precisely regulated by a generator. As the electrode passes through different tissue types, Advanced Response Control (ARC) Tissue Sensing Technology adjusts the energy output to deliver the optimal amount of energy needed to reach the desired clinical effect.

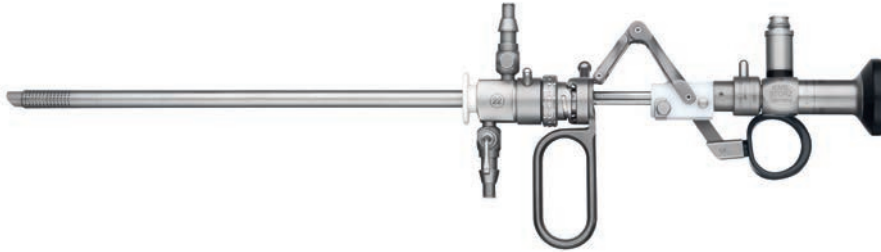
This unit delivers optimal performance combined with great patient safety. The bipolar technique, which is particularly beneficial for patient safety, has been specially optimized for this unit. Together with the bipolar resectoscopes from KARL STORZ, the unit achieves optimal results in bipolar resection.






Benefits

- ARC Tissue Sensing Technology automatically adjusts the amount of energy delivered for a consistent performance, improved hemostasis, and a more precise dissection
- True Bipolar technology with precise energy delivery at the electrode tip for the least amount of energy dispersal and the greatest amount of control
- Plug and play usability
- For multispecialty use with predefined procedures for each speciality
- Predefined procedures for each speciality
- Easy-to-use 9" color touch screen for fast and accurate case set-up
- Can be integrated into the KARL STORZ OR1™

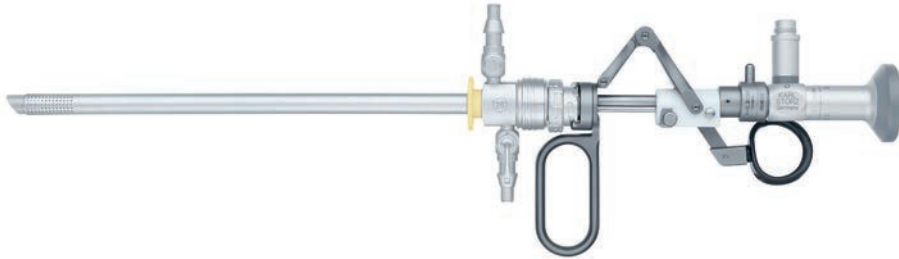
Intrauterine HF Surgery with the Bipolar 7 mm (22 Fr.) Resectoscope







- 26020FA **HOPKINS® Telescope 12°**, diameter 2.9 mm, length 30 cm, **autoclavable**, fiber optic light transmission incorporated, color code: black
- 26055EB **Working Element**, bipolar
- 26055SCK **Resectoscope Sheath**, 7 mm (22 Fr.), oblique beak, rotating inner sheath
- 26055OC **Standard Obturator**
- 26055CD **Telescope Bridge**, with 5 Fr. working channel, for use with 26055SC

	Order No.	Description
	26055GP1-S	Cutting Loop , bipolar
	26055NB-S	Coagulation Electrode , bipolar, ball end
	26055BL1-S	Cutting Electrode , bipolar, pointed

Intrauterine HF Surgery with the Bipolar 8.5 mm (26 Fr.)



- 26105FA **HOPKINS® Telescope 12°**, enlarged view, diameter 4 mm, length 30 cm, **autoclavable**, fiber optic light transmission incorporated, color code: black
- 26040EB **Working Element**, bipolar
- 26050SCK **Resectoscope Sheath**, 8.5 mm (26 Fr.) oblique beak, rotating inner sheath
- 26040OC **Standard Obturator**
- 26069CD **Telescope Bridge** with 5 Fr. working channel, for use with 26050SC

	Order No.	Description
	26040GP1-S	Cutting Loop , bipolar
	26040NB-S	Coagulation Electrode , HALF MOON®, bipolar
	26040BL1-S	Cutting Electrode , bipolar, pointed
	26040JB1-S	Cutting Loop , bipolar, longitudinal

Semi-rigid and Reusable 5 Fr. Operating Instruments

Available lengths: 34 cm and 40 cm (26160xx)

Compatible with the following instrument bridges:

- 26055CD **7 mm (22 Fr.)** Telescope Bridge with 5 Fr. working channel
- 26069CD **8.5 mm (26 Fr.)** Telescope Bridge with 5 Fr. working channel



- 26159EHW **Scissors**, semi-rigid, blunt, single action jaws, 5 Fr., length 34 cm



- 26159SHW **Scissors**, semi-rigid, pointed, single action jaws, 5 Fr., length 34 cm



- 26159UHW **Biopsy and Grasping Forceps**, semi-rigid, double action jaws, 5 Fr., length 34 cm



- 26159H **HESSELING Tenaculum Grasping Forceps**, semi-rigid, double action jaws, 5 Fr., length 34 cm



- 26159DHW **Punch**, semi-rigid, through-cutting, single action jaws, 5 Fr., length 34 cm







- 26159BHW **Biopsy Spoon Forceps**, semi-rigid, double action jaws, 5 Fr., length 34 cm



- 26159DS **DI SPIEZIO SARDO Grasping Forceps**, semi-rigid, double action jaws, 5 Fr., length 34 cm



- 26159HS **HESSELING and DI SPIEZIO SARDO Tenaculum Grasping Forceps with Spike**, semi-rigid, double action jaws, 5 Fr., length 34 cm

Bipolar Electrodes		
	26159BE	Bipolar Dissection Electrode , semi-rigid, 5 Fr. length 42 cm
	26159GC	GORDTS/CAMPO Bipolar Ball Electrode , semi-rigid, 5 Fr. length 42 cm
	26158BE	Bipolar Dissection Electrode , 5 Fr., needle electrode angled 90°, with chamber in handle
	26176LV	Bipolar High Frequency Cord , length 300 cm

Fluid Management System

The ENDOMAT® SELECT pump, together with the EQUIMAT® controller, offers precise fluid management through a simple user interface. This system includes a pressure controlled infusion pump, a fluid collection system, and a fluid deficit monitoring system. The combination is ideal for users seeking:

- Maximum patient safety
- Adjustable flow and pressure rates for optimal uterine distention
- Simplified setup and operation
- Streamlined workflow for the OR

Fluid Management

ENDOMATSELECTFM-KT Kit includes:

UP210-GYN	ENDOMAT® SELECT Pump
20302020-1	EQUIMAT® (SCB)
38332130	Scale Measuring Element
26600EQC	Calibration Test Weight (500g)
XUSM0010	Fluid-Management Stand Set
	Includes:
	Fluid Management Stand Base
	Fluid Management Stand Pole
	Ring Adaptor to Accept canisters



Required Software

UP602	Hysteroscopy Software , license (allows selection of “HYS” procedure)
UP610	Advance Package-Software , license (extends functions of installed software packages)

Accessories

031523-10-GYN	Tubing Set , irrigation, pressure-controlled, sterile, for single use, package of 10
030247-10	Single-use Y-tubing Set , for suction, sterile, for single use, package of 10
26163FD	Kimberly Clark Collection Drape , sterile, for single use, 1pk

UH400 Surgical Generator



UH400U **AUTOCON® III 400,**
high-end HF generator, power
supply 220-240 VAC, 50/60 Hz
including:
Mains Cord



UF902 **Two-Pedal Footswitch,**
with button for switchover function,
for use with HF generators



UH801 **Bipolar High Frequency Cord,**
length 400 cm, for KARL STORZ
AUTOCON® III 400 SCB, for
use with KARL STORZ bipolar
resectoscopes



26176LV **Bipolar High Frequency Cord,**
length 300 cm

More than
75
Years

*Shaping the Future
of Endoscopy with you*

KARL STORZ Endoscopy-America, Inc.
2151 East Grand Avenue
El Segundo, CA 90245-5017, USA
Phone: +1 424 218-8100
Phone toll free: 800 421-0837 (US only)
Fax: +1 424 218-8525
Fax toll free: 800 321-1304 (US only)
E-Mail: communications@karlstorz.com

STORZ
KARL STORZ—ENDOSKOPE

THE DIAMOND STANDARD

KARL STORZ SE & Co. KG
Dr.-Karl-Storz-Straße 34, 78532 Tuttlingen/Germany
Postbox 230, 78503 Tuttlingen/Germany
Phone: +49 7461 708-0
Fax: +49 7461 708-105
E-Mail: info@karlstorz.com

www.karlstorz.com