



### HIGHLIGHTS

- Display Information to Quickly and Consistently Setup the Operating Room
- Quickly Recall Information with Preset Sessions
- Flexible Windowing of up to 8 Live Video Sources Simultaneously\*
- TouchControl of Computer Workstations
- Infinite Web Browsers and Data Sources
- Control of KARL STORZ NEO IP Integration
- Built-In Video Conferencing Software Options
- 50", 65", 75", 86", 98" Models. 4K Resolution

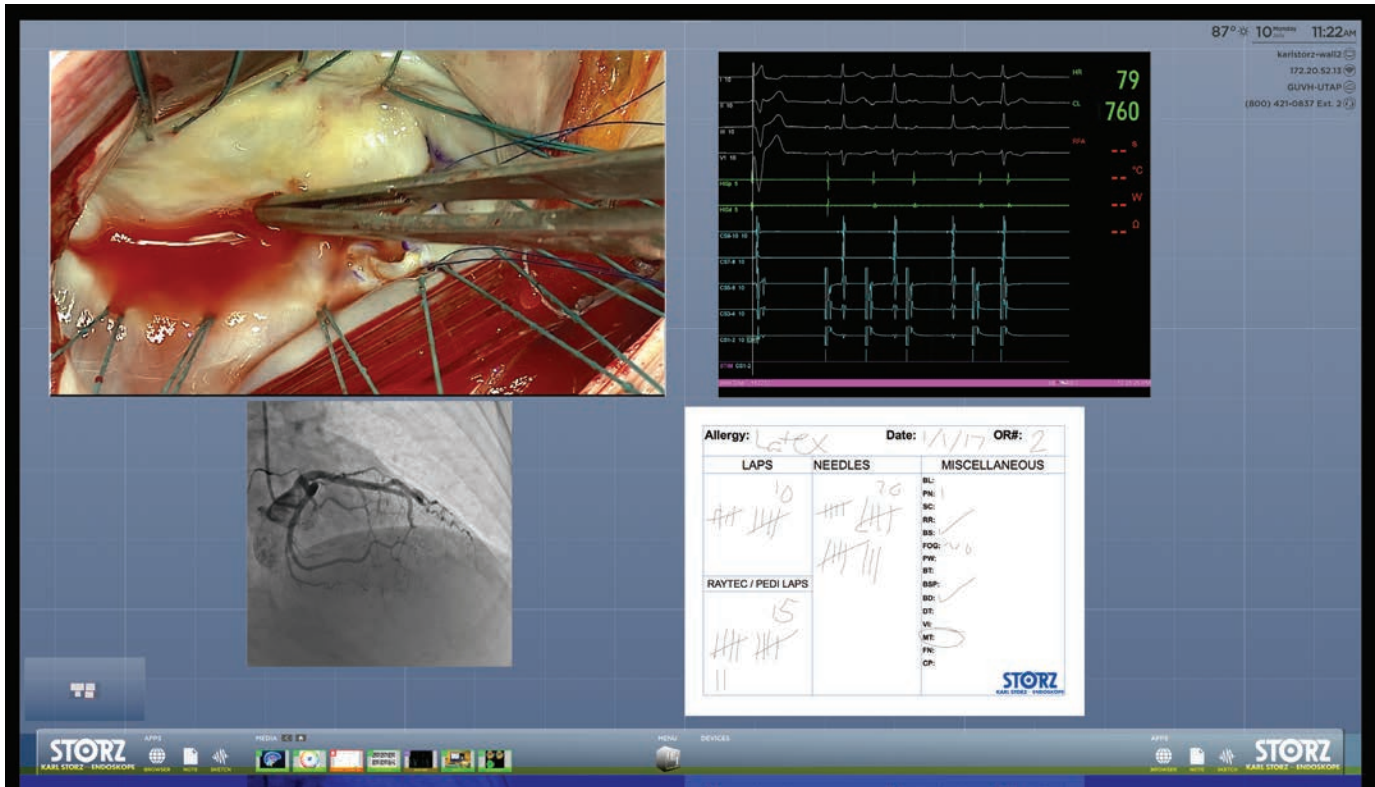
\* Base processor supports up to (4) live video sources. Over (4) live video sources requires the WUIS9019 CollaboratOR Processor Pro upgrade package.

### IS / IT HIGHLIGHTS

- Remote Tech Support and Software Updates
- Live Streaming Capable, password and pin number protected
- MultiSite Capable, connecting two CollaboratORs together over IT network, 128bit AES Encryption.

Please note that product details are subject to change without prior notice.  
For the most up-to-date product information, refer to the KARL STORZ website ([www.karlstorz.com](http://www.karlstorz.com)).

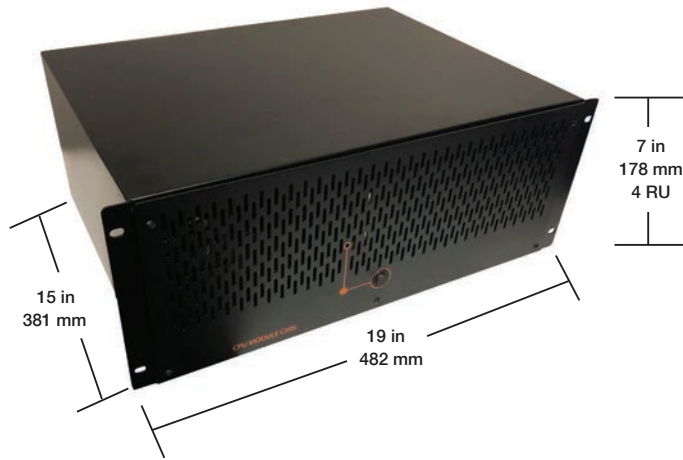
## OPERATING ROOM INTERACTIVE DISPLAY (SOFTWARE V4.7.5)



### DISPLAY HARDWARE

FEATURE	DETAIL	ADDITIONAL NOTES
Screen Size (Diagonal) & Weight	WUIS9010 50" / 140 lbs. WUIS9011 65" / 110 lbs. WUIS9012 75" / 140 lbs. WUIS9013 86" / 175 lbs. WUIS9014 98" / 350 lbs.	44 7/8" x 26" x 2 7/8" (WxHxD) 61 3/4" x 39" x 3 3/4" (WxHxD) 70 1/2" x 43 7/8" x 4" (WxHxD) 80 1/8" x 49" x 4" (WxHxD) 88" x 50 1/2" x 4 1/8" (WxHxD)  Rough-In Wall Box (WUIS9001)
Resolution	3840 x 2160 pixels	
Touch	Multitouch, Swipe and Touch Gesture Capable	Optional Stylus, non-sterile (WUIS3387)
Power	WUIS9010 50" / 100-240VAC, 115W WUIS9011 65" / 100-240VAC, 200W WUIS9012 75" / 100-240VAC, 340W WUIS9013 86" / 100-240VAC, 320W WUIS9014 98" / 100-240VAC, 500W	870 BTU 560 BTU 870 BTU 819 BTU 1200 BTU

### OPERATING ROOM INTERACTIVE DISPLAY (SOFTWARE V4.7.5)



#### PROCESSOR HARDWARE

FEATURE	DETAIL	ADDITIONAL NOTES
Connections	<ul style="list-style-type: none"> <li>(1) Thunderbolt 3</li> <li>(3) USB 3.0</li> <li>(1) HDMI Out</li> <li>(2) RCA (L-R) Audio Out</li> <li>(1) Optional: XLR Audio In</li> <li>(1) RJ45 TouchControl</li> <li>(2 or 4) Optional HDMI In</li> </ul>	<p>Max Resolution (3840 x 2160/60) Landscape or Portrait Modes</p> <p>HDMI Inputs Require: 1x WUIS9020 Dual Hardline Input Module or 1x WUIS9021 Quad Hardline Input Module</p>
Network	<ul style="list-style-type: none"> <li>(1) 1G RJ45 Wired Ethernet</li> <li>Optional: Wi-Fi 802.11ac or 802.11 a/b/g/n</li> </ul>	WIFI disabled by default
Power	<ul style="list-style-type: none"> <li><b>Voltage:</b> 100 VAC - 240 VAC</li> <li><b>Frequency:</b> 50 Hz - 60 Hz</li> <li><b>Power Consumption:</b> 625 W (7A - 2.6A)</li> <li><b>BTU:</b> 2132 BTU /Hr Max</li> </ul>	
Physical	<ul style="list-style-type: none"> <li><b>Dimensions (W x H x D):</b> 19" x 7" x 15" (482 x 178 x 381mm)</li> <li><b>Weight:</b> 30 lbs. (13.6 Kg)</li> </ul>	4 RU Height

## OPERATING ROOM INTERACTIVE DISPLAY (SOFTWARE V4.7.5)

## PROCESSOR SOFTWARE

FEATURE	DETAIL	ADDITIONAL NOTES
Software	Flexible Size of Windows Flexible Placement of Windows 4 Simultaneous Live Feeds Displayed Unlimited Data and Web Sources Displayed Touch + Keyboard/Mouse Control of up to 4 Devices Session Presets Annotation Optional Control of NEO IP Integration	
Integration System Compatibility	Any 1080p DVI / HDMI Video Routing System	KARL STORZ NEO IP Integration Recommended
Live Streaming	Up to 50 Connections via mobile / laptop app Password Protected Rotating PIN number protection AES 128 bit encryption	
Video Conferencing Plugins	MultiSite (Optional) Skype for Business (Optional) Webex (Optional) Zoom (Optional) Blue Jeans (Optional) AirConnect (Built-In, video only - no audio)	
Operating System	macOS 10.15	

It is recommended to check the suitability of the product for the intended procedure prior to use.

KARL STORZ SE & Co. KG  
Dr.-Karl-Storz-Straße 34, 78532 Tuttlingen/Germany  
Postbox 230, 78503 Tuttlingen/Germany  
Phone: +49 7461 708-0  
Fax: +49 7461 708-105  
E-Mail: info@karlstorz.com  
  
www.karlstorz.com



KARL STORZ Endoscopy-America, Inc.  
2151 East Grand Avenue  
El Segundo, CA 90245-5017, USA  
Phone: +1 424 218-8100  
Phone toll free: 800 421-0837 (US only)  
Fax: +1 424 218-8525  
Fax toll free: 800 321-1304 (US only)  
E-Mail: communications@karlstorz.com