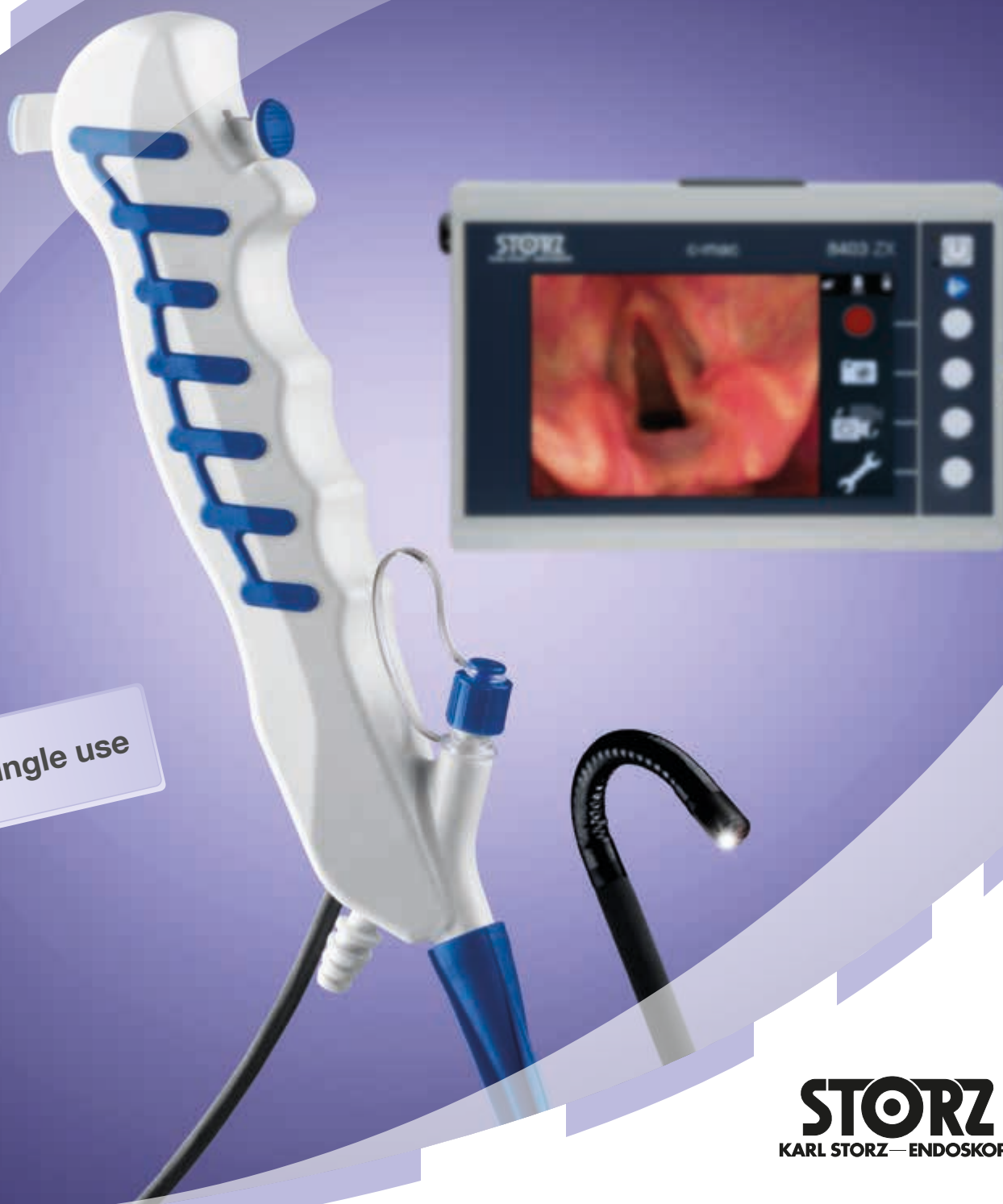


# The C-MAC® FIVE S

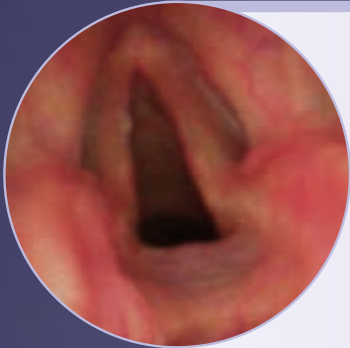
Premium class for single use



for single use

# The C-MAC® FIVE S

## Flexible Intubation Video Endoscopes for single use



### Excellent image quality

- Uses the same CMOS chip as the reusable FIVE
- Powerful LED at the distal tip provides balanced illumination of the entire work area
- Video imaging in 4:3 format – no tunnel vision
- Compatible with the C-MAC® Monitor and C-HUB® II



### Ergonomics tailored to your airway management

- Exceptional stiffness with very good guidance properties
- ETT with very good gliding properties due to the special sheath material
- For the placement of Endotracheal Tubes (ETT) as of size 4 mm
- For position check of Double Lumen Tubes (DLT)
- For airway inspection
- Practical tube fixation thanks to the special endoscope geometry



### The C-MAC® monitor

- 7" TFT wide angle view display (160°) with enhanced image quality
- Rapid toggling between video sources possible, e.g., with the C-MAC® S video laryngoscopes
- Documentation for data backup on SD and USB
- HDMI output for connection to an external monitor
- Brightness can be adjusted to ambient conditions within seconds



### The C-MAC® system

- System open to all C-MAC® components (forward and backward compatible)
- The C-MAC® and C-MAC® S video laryngoscopes, the FIVE or C-MAC® VS as well as C-CAM® can be connected for coupling all eyepiece endoscopes

## Maintaining high standards!

Although the new C-MAC® FIVE S is designed for single use, the endoscope fits seamlessly into the excellent image quality of the C-MAC® system. The outstanding rigidity of the sheath and the special anti-buckling protection at the distal tip provides the same convenient handling offered by the reusable FIVE endoscopes.

If you are looking for a complete airway management system, then there is only one solution:

## The C-MAC® System!

Now available



It is recommended to check the suitability of the product for the intended procedure prior to use.



...evolution continues

**STORZ**  
**KARL STORZ—ENDOSKOPE**

*THE DIAMOND STANDARD*

KARL STORZ SE & Co. KG  
Dr.-Karl-Storz-Straße 34, 78532 Tuttlingen/Germany  
Postbox 230, 78503 Tuttlingen/Germany  
Phone: +49 (0)7461 708-0  
Fax: +49 (0)7461 708-105  
E-Mail: [info@karlstorz.com](mailto:info@karlstorz.com)  
[www.karlstorz.com](http://www.karlstorz.com)