

Think Flexible — Be Flexible

Add our Flexible GI SILVERSCOPE® to your
IMAGE1 S™ Camera Architecture



Current Status

The use of GI scopes has expanded to include use by the surgeon intraoperatively in the OR for identifying disease or confirming a secure anastomosis. General, Bariatric, Thoracic, and Colorectal surgeons are adopting the use of GI scopes in the OR to ensure “function follows form” and to ensure the best outcome for their patients.



The KARL STORZ Solution – IMAGE1 S™ and GI Videoscopes

Product Description:

KARL STORZ Gastrosopes

	Product	Distal tip outer diameter (mm)	Working length (cm)	Instrument channel diameter (mm)
Slim gastroscope	13820NKS	5.9	110	2.0
Standard gastroscope	13821NKS	9.3	110	2.8

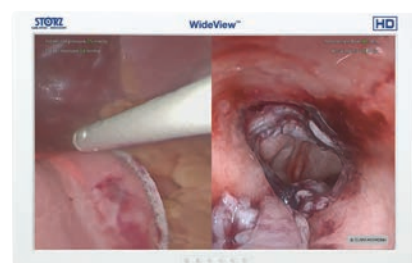
KARL STORZ Colonoscopes and Sigmoidoscopes

Sigmoidoscope	13920NKSK	11.2	80	3.4
Standard colonoscope	13925NKSK	12.9	160	3.8

Using the IMAGE1 S™ camera architecture with the KARL STORZ SILVER SCOPE® Series Gastrointestinal video endoscopes the following advantages exist:

Clinical Effectiveness

- Laparoscopic and endoscopic views can be seen on the same monitor as a Picture in Picture (PiP)
- Enables all personnel in the OR to view the same image, improving patient safety and confirming the appropriateness of surgical intervention



Operational Efficiency

Operational efficiency is a major contributor to both hospital profitability and to surgeon/staff satisfaction. The integration of the SILVER SCOPE® Series GI Videoscopes with the IMAGE1 S™ technology can enhance operational efficiency for procedures performed in the OR:

- Quick setup with a dedicated scope and one tower
- Eliminates the need to identify and bring a second tower into the operating room
- Standardized equipment for all types of endoscopic procedures (same user interface, universal language, reduced need for training)

Reduction of cost

- Eliminates the cost of a redundant video tower
- Cost of ownership is greatly reduced by the use of the IMAGE1 S™ camera architecture
- Availability of equipment is more likely if it “belongs” to the OR versus the sharing with the ever-busy endoscopy unit; a saving of valuable OR time. “The right equipment at the right time.”

Reference	KARL STORZ Solution	5 year Cost Savings*
GI Video Endoscopy	Add: GI Video endoscope, IMAGE1 S™ X-LINK, Xenon 100 Light Source, stand Keep: IMAGE1 S CONNECT® and IMAGE1 S™ H-3 LINK module, monitor, video cables, capture device	\$90K
*Used a \$90K average video tower cost as a reference for appropriate cost savings		





...evolution continues

STORZ
KARL STORZ — ENDOSKOPE

THE DIAMOND STANDARD

KARL STORZ SE & Co. KG
Dr.-Karl-Storz-Straße 34, 78532 Tuttlingen/Germany
Postfach 230, 78503 Tuttlingen/Germany
Telefon: +49 (0)7461 708-0
Telefax: +49 (0)7461 708-105
E-Mail: info@karlstorz.com
www.karlstorz.com

KARL STORZ Endoscopy-America, Inc.
2151 East Grand Avenue
El Segundo, CA 90245-5017, USA
Phone: +1 424 218-8100
Phone toll free: 800 421-0837 (US only)
Fax: +1 424 218-8525
Fax toll free: 800 321-1304 (US only)
E-Mail: communications@karlstorz.com