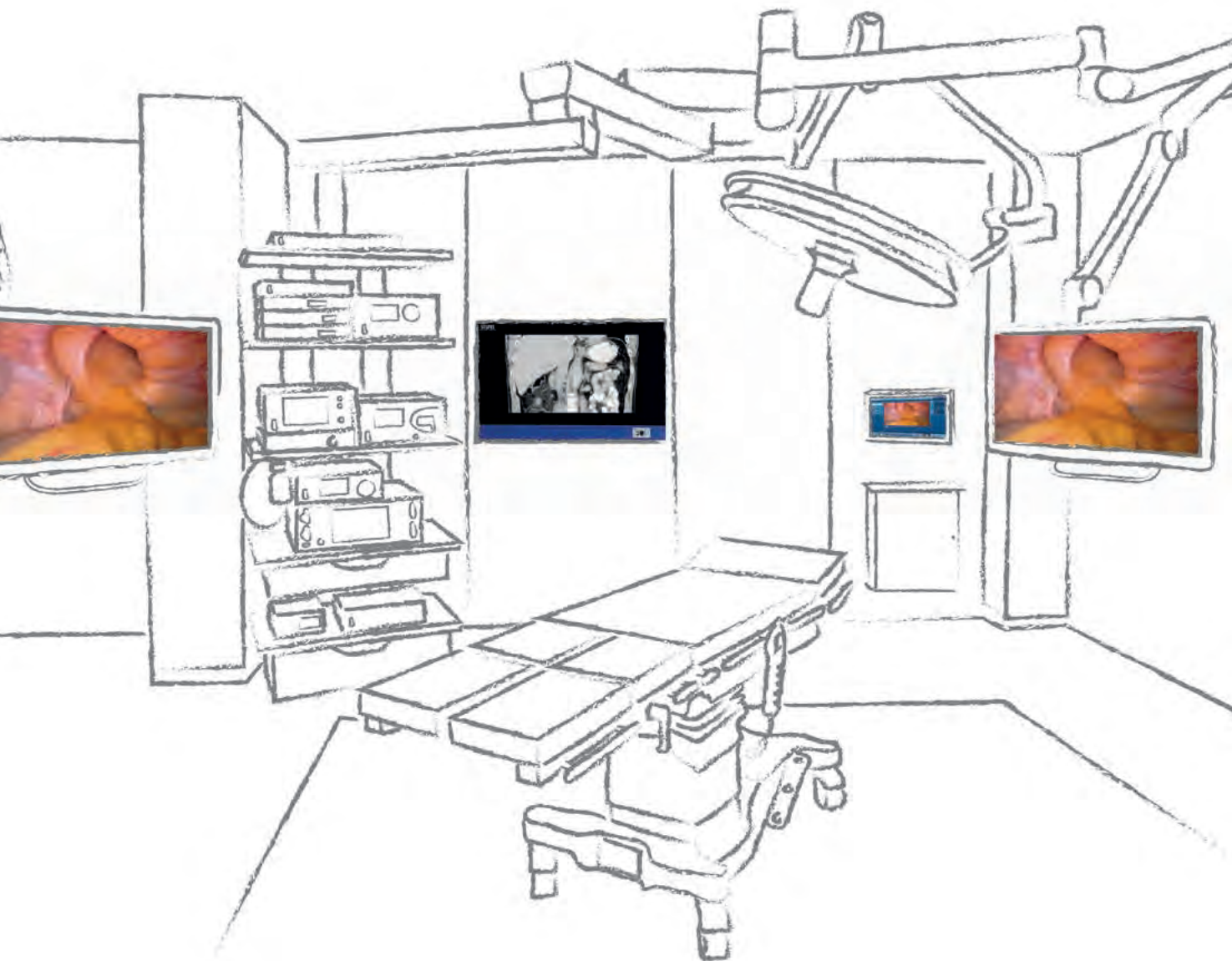


OR1™ FUSION ELEMENTARY SOLUTION

4K or FULL HD Video Management with Documentation is becoming more financially accessible than ever before



It's time to decide on an affordable Integrated OR

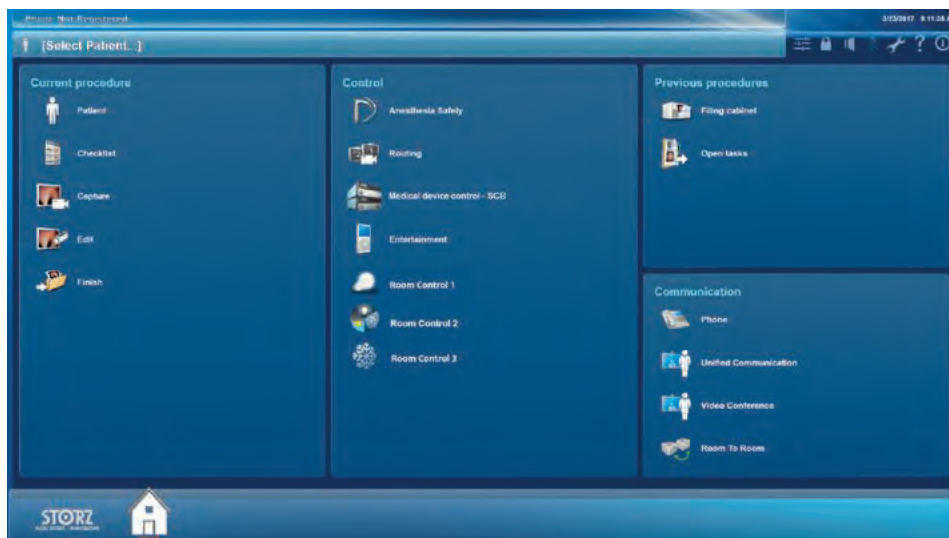
The KARL STORZ OR1 FUSION® “Elementary Solution” facilitates your financially accessible entry into OR Integration and offers compatibility with a set of options for package expansion.

The core of the OR Integration solution OR1™ FUSION as an All-in-One-Solution is the future-proof, IP technology-based 4K or FULL HD Video Management in combination with the embedded documentation solution, derived from AIDA®. This includes HIS and PACS communication.

Additionally, this OR Integration solution facilitates safety in the OR via elements such as the configurable Patient Safety Checklist, based on the WHO Surgical Checklist, and the Anesthesia Safety Module during the intubation procedure.

The embedded Remote Service client enables minor updates including troubleshooting to be performed from external facilities without an on-site service technician.

This OR1™ FUSION “Elementary Solution” set allows simple installation in an on-wall enclosure inside the OR which keeps cabling ways and installation time short (PC Cabinet).



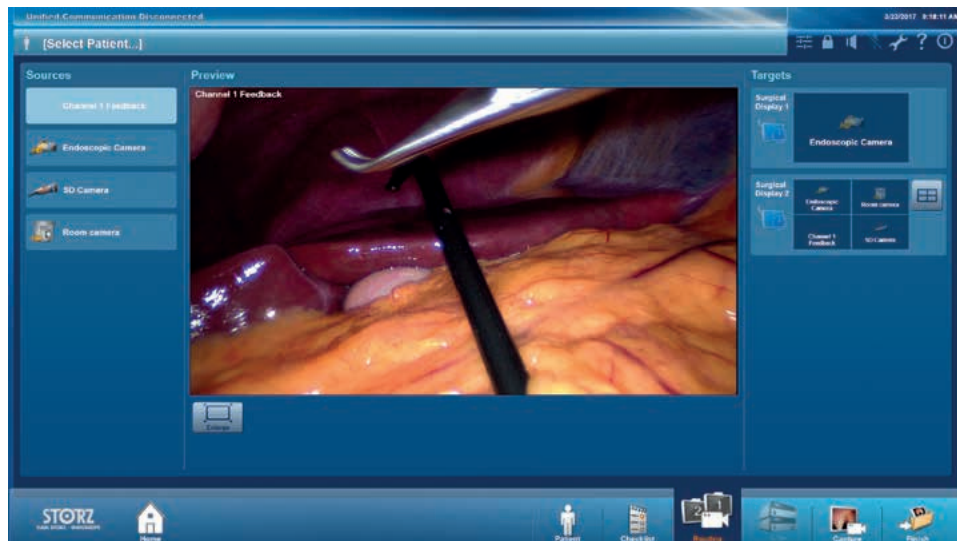
Features and Benefits

- Price-sensitive OR Integration entry solution
- All-in-one, space-saving Video Management and Documentation solution
- Future-proof IP based 4K UHD or FULL HD video routing, featuring surgery, teaching and mentoring in uncompressed, lossless high image quality
- Leverages the overview via PiP (Picture-in-Picture), PaP (Picture side-by-side) and Quad view (4 images on one screen). Quad view requires a 4K UHD monitor.
- Easy to navigate, intuitive user interface, requiring less effort in training
- Installation inside the OR which keeps cabling ways and installation time short
- Options support package expansion according to your demands

OR1™ FUSION “Elementary Solution” 4K UHD or FULL HD Set

Core package content, depending on your preference of 4K UHD or FULL HD

- OR1 FUSION CONTROL®, WO 300
 - Provides 4K UHD or FULL HD video routing within the OR and embedded documentation, derived from AIDA®
- 2 x 26" FULL HD or 2 x 31" 4K UHD monitors
- 21.5" Touch Screen (wall mounted, fixed height at an ergonomic position)
- PC Cabinet (on-wall OR1™ technology enclosure)
- 1 x HD ADAPTOR1® or 1 x 4K UHD ADAPTOR1®, for e.g. X-ray C-arm device, etc.
- 10G network infrastructure, 24 port network switch and cabling
- Installation



Technical data

	OR1 FUSION CONTROL® unit:	26" FULL HD monitor:	31" 4K UHD monitor:	Optional 55" UHD wall monitor:
Voltage	100-240 VAC, 50/60 Hz	100-250 VAC, 50/60 Hz	100-250 VAC, 50/60 Hz	90-260 VAC, 50/60 Hz
Power	max. 350 W	max. 50 W	max. 140 W	max. 170 W
Dimensions in mm (w x h x d)	305 x 74.5 x 355	633 x 411 x 90	777 x 472 x 92	1260 x 734 x 87
Weight in kg	max. 6.5	max. 9.4	max. 12.9	max. 24.6
Hard disk capacity	2 TB, RAM: 16 GB			

For further information please contact your local KARL STORZ representative or OR1™ specialist



Perfecting SURGICAL Outcomes



THE DIAMOND STANDARD

KARL STORZ SE & Co. KG
Dr.-Karl-Storz-Straße 34, 78532 Tuttlingen/Germany
Postbox 230, 78503 Tuttlingen/Germany
Phone: +49 (0)7461 708-0
Fax: +49 (0)7461 708-105
E-Mail: info@karlstorz.com
www.karlstorz.com