

## Equine Dental Scope

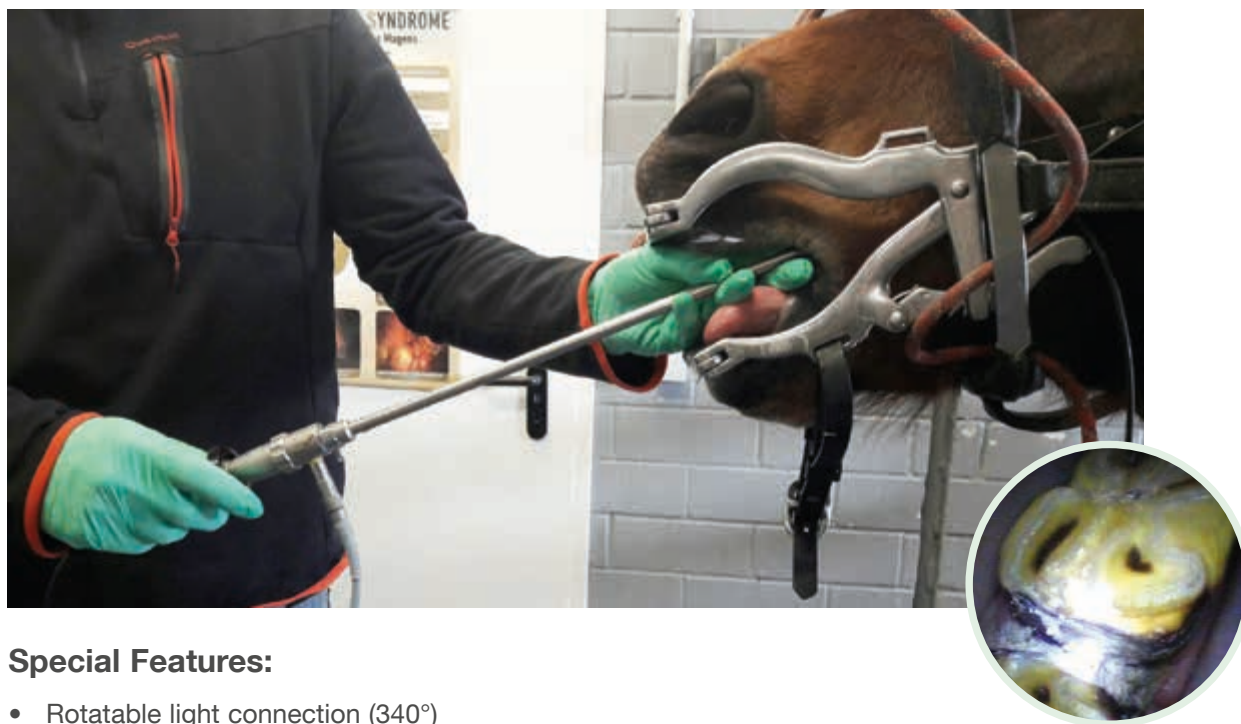


## Dental Endoscopy: See clearly and document all areas of the horse's mouth

The use of an endoscope during equine dental exams, cleaning, floating, or extracting teeth and other procedures improves visualization and accuracy. With a working length of 44 cm and a viewing angle of 70°, the new KARL STORZ intraoral endoscope is ergonomic and provides excellent views of otherwise hard to view areas of the patient's oral cavity. A rotatable light connector (340°) and irrigation connector (360°) on the irrigation sheath provides easier handling and manipulation of the scope during examinations and procedures.

The endoscope is completely soakable, making the cleaning process easier, while eliminating any concern of damaging the scope with water intrusion.

Two different sheaths are available for use with the endoscope. The protection sheath simply provides additional protection to the endoscope during examinations, and the irrigation sheath facilitates the use of fluids during examinations for faster cleaning of the interdental spaces.



### Special Features:

- Rotatable light connection (340°)
- Endoscope is completely soakable for easier cleaning and protection from fluids during procedures
- Robust construction protects telescope from damage
- New dimensions are more ergonomic and deliver easier handling
- Irrigation connector on sheath 66490 CS is rotatable (360°)
- Two sheath options: Protection Sheath (66490 CQ) and Irrigation Sheath (66490 CS)



66490 CF **Dental Telescope**, direction of view 70°, angle of view 90°, diameter 8 mm, working length 440 mm, total length 523 mm, for use with Protective Sheath 66490 CQ and Irrigation Sheath 66490 CS



66490 CQ **Protective Sheath**, with stopcock for lens cleaning the dental telescope 66490CF



66490 CS **Irrigation Sheath**, distal irrigation hole with diameter 1.5 mm, irrigation connector with 360° rotating stopcock, 340° rotating light connection, working length 440 mm, for use with Dental Telescope 66490 CF

The use of a camera system with our equine intraoral endoscope facilitates better visualization, a more comfortable experience for the operator and the ability to document findings. KARL STORZ mobile camera systems TELE PACK VET X LED and C-MAC® monitor are ideal solutions.

Check out our schedule of upcoming hands-on training courses at <http://go.karlstorz.com/eventsVET>



## TELE PACK VET X LED: Five devices, one compact unit

This high performance, all-in-one unit integrates every component necessary for endoscopic imaging: camera, light source, monitor, insufflation pump and image capture. The TELE PACK VET X LED is compatible with all types of endoscopes, including videoendoscopes, rigid telescopes, fiberscopes and exoscopes.



- RP100 S1    **TELE PACK VET X LED**, endoscopic video unit for use with all KARL STORZ TELECAM one-chip camera heads, veterinary video camera heads and video endoscopes, incl. LED light source similar to Xenon technology, with integrated insufflation pump and digital Image Processing Module, 15" LCD TFT monitor with LED backlight, USB/SD memory module, color systems PAL/NTSC, power supply 100-240 VAC, 50/60 Hz including:
- USB Flash Drive, 32 GB**
  - SD Card, 32 GB**
  - Mains Cord**
  - Mains Cord, US plug**
  - Case**

- RP100 S2    **Same**, without case

For optional accessories see **ENDOWORLD® VET 36, TELE PACK VET X LED**

## Camera Head



20 2120 30  
20 2121 30

PAL  
NTSC

TELECAM  
One-Chip Camera Head

color systems PAL/NTSC, soakable, gas-sterilizable, with integrated Parfocal Zoom Lens,  $f = 25\text{-}50\text{ mm}$ , (2x), 2 freely programmable camera head buttons

For other camera head options, see **ENDOWORLD® VET 36, TELE PACK VET X LED**

## Fiber Optic Light Cable



- 495 NVC **Fiber Optic Light Cable**, with 90° deflection to the instrument, very narrow radius of curvature, diameter 4.8 mm, length 300 cm
- 69495 NE **Fiber Optic Light Cable**, with straight connector, diameter 4.8 mm, length 300 cm

## Adaptor



- 495 KS **Adaptor**, for standard KARL STORZ fiber optic light cable (except 495 NCS)
- 495 EW **Light Adaptor**, angled 90°, diameter 4.8 mm, free rotatable, to connect with standard telescopes

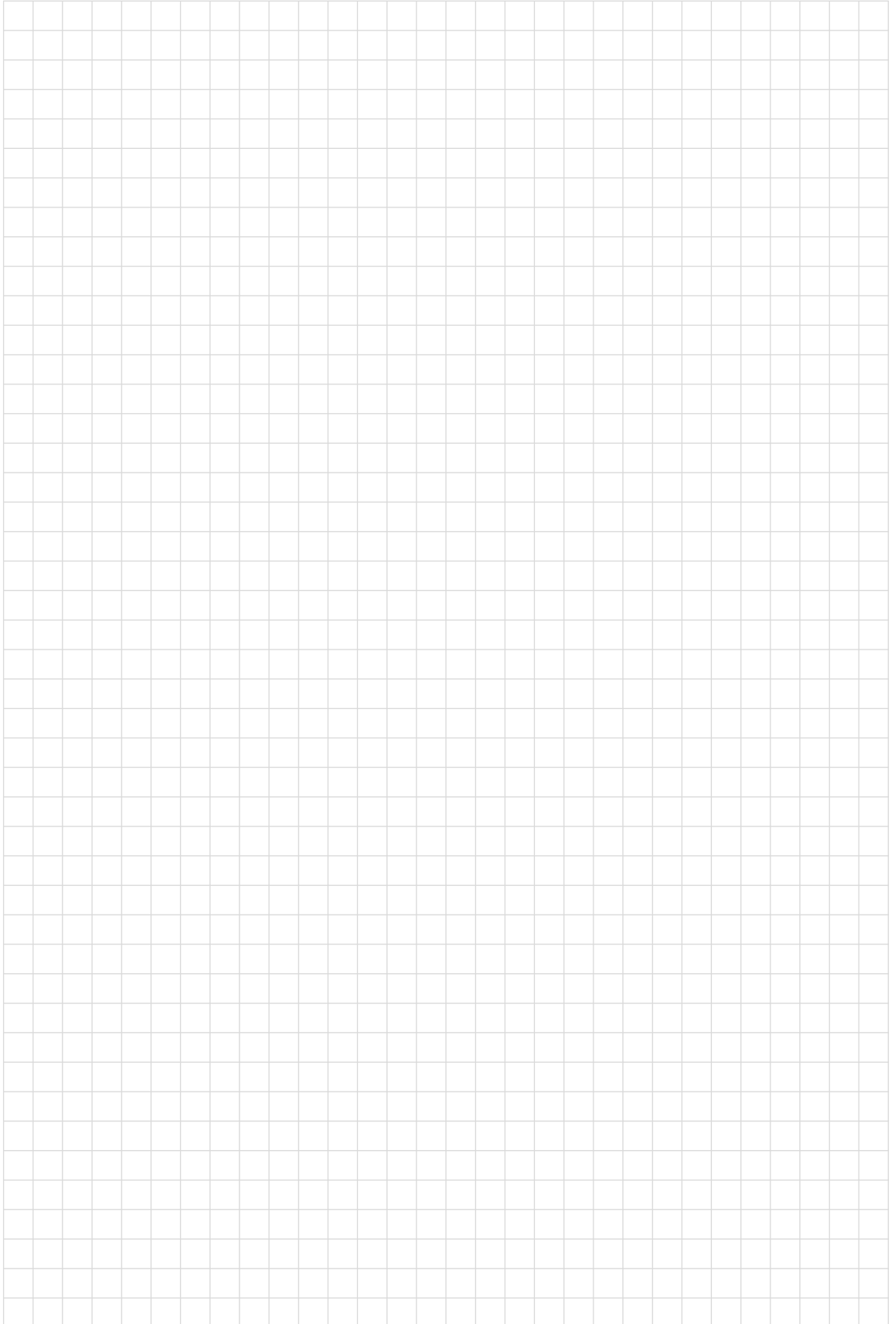
## C-MAC® Monitor: Simple, portable and easy to use



The C-MAC® Monitor makes dental examinations and procedures fast and easy. The compact, mobile design makes it convenient for use in the field or barn. An integrated documentation system captures still images and videos on an SD or USB flash drive.

- 8403 ZXK    **C-MAC® Monitor for CMOS Endoscopes**, screen size 7" with 1280 x 800 pixel resolution, two camera inputs, a USB and a HDMI port, optimized user interface, video and image capturing in real time on SD card, playback of recorded video clips and still images, data transfer from SD card to USB flash drive possible, splash-proof according to IP54, suitable for wipe disinfection, shock-resistant ABS plastic housing, intelligent power management with rechargeable Li-Ion batteries, VESA 75 mounting option, power adaptor for EU, UK, USA and Australia, power supply 110-240 VAC, 50/60 Hz, for use with CMOS video endoscopes including:  
**SD Card ULTRA**, 8 GB  
**Protection Cap**  
**VESA 75 Quick Clip**  
**Mains Adaptor Set**
- 20290132    **C-CAM® Camera Head**, 8-pin, one-chip CMOS camera head, resolution 640 x 480, focal length  $f = 20$  mm, for use with C-HUB® 20290101 and C-HUB® II 20290301 as well as C-MAC® Monitors 8402 ZX/8403 ZX
- 11301 D4    **Battery Light Source LED for Endoscopes**, with fast screw thread, boost mode for temporary increase in brightness, burning time > 120 min, brightness > 110 lm / > 150 klx, weight approx. 150 g ready for use, suitable for wipe disinfection, for use with KARL STORZ endoscopes

## Notes





**STORZ**  
KARL STORZ—ENDOSKOPE

THE DIAMOND STANDARD



KARL STORZ SE & Co. KG  
Dr.-Karl-Storz-Straße 34, 78532 Tuttlingen/Germany  
Postbox 230, 78503 Tuttlingen/Germany  
Phone: +49 (0)7461 708-0  
Fax: +49 (0)7461 708-105  
E-Mail: [vet@karlstorz.com](mailto:vet@karlstorz.com)  
[www.karlstorz.com](http://www.karlstorz.com)