

# STORZ

KARL STORZ — ENDOSKOPE



## OR1™ mini Streaming Media Player Installation Manual



## **Welcome**

Thank you for your expression of confidence in the KARL STORZ brand name. Like all of our other products, this product is the result of years of experience and great care in manufacture. You and your organization have decided in favor of a modern, high-quality product from KARL STORZ.

## **Copyright**

Copyright © 2016 by KARL STORZ Endoscopy-America, Inc., OR1™ Stafford, Texas. All rights reserved. This manual or any portion thereof may not be reproduced or used in any manner whatsoever without the express written permission of the publisher except for the use of brief quotations in a book review.

Printed in the United States of America.  
First Printing, 2015

## **Publisher**

KARL STORZ SE & Co. KG  
Dr.-Karl-Storz-Straße 34  
78532 Tuttlingen

Postfach 230  
78503 Tuttlingen

Germany

Telefon: +49 7461 708-0  
Fax: +49 7461 708-105  
E-Mail: [info@karlstorz.com](mailto:info@karlstorz.com)  
[www.karlstorz.com](http://www.karlstorz.com)

---

## Contents

1	Installation .....	4-1
1.1	System Requirements .....	4-1
1.1.1	Windows Compatibility .....	4-1
1.1.2	Incompatibility – Not Supported .....	4-1
1.1.3	Other Compatibility .....	4-1
1.1.4	Size of Files to Download .....	4-1
1.1.5	Computer System Requirements.....	4-1
1.2	How to Download the Software App to Your Computer .....	4-1
1.2.1	Recommendation .....	4-1
1.3	How to Setup and Log into a Stream.....	4-2
1.4	How to Use the OR1™ mini Streaming Media Player .....	4-4
1.4.1	Saving Stream Login Criteria and Connecting .....	4-4
1.4.2	Changing Saved Stream Information .....	4-5
1.4.3	Features of the Streaming Media Player .....	4-6
1.4.4	How to log off .....	4-6
1.5	TROUBLESHOOTING .....	4-7
1.5.1	Concurrent Users .....	4-7
1.5.2	Stream Quality .....	4-7
1.5.3	Network Configurations .....	4-7
1.5.4	Recommendation .....	4-7



# 1 Installation

## 1.1 System Requirements

### 1.1.1 Windows Compatibility

- Windows 7 (32-bit/64-bit)
- Windows 8 (32-bit/64-bit)
- Windows 8.1(32-bit/64-bit)
- Windows 10 (32-bit/64-bit)

### 1.1.2 Incompatibility – Not Supported

- Windows XP, Windows Vista, Windows ME, Windows 2000, Windows NT
- Other Windows products before 2000, MAC (Macintosh/Apple), Linux

### 1.1.3 Other Compatibility

- Windows Installer version 5.0 or higher

### 1.1.4 Size of Files to Download

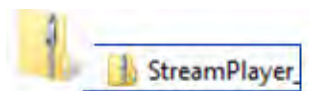
- Hard disk space requirements: 100MB
- RAM requirements: 2GB
- Software files: 40MB

### 1.1.5 Computer System Requirements

- Processor: 2.4 GHz (Dual core), 3.5 GHz (Single core)
- Graphics: Modern Intel Extreme Graphics or Nvidia or ATi with 256MB video RAM, core clock 600 MHz



## 1.2 How to Download the Software App to Your Computer

The OR1™ mini Streaming Media Player app is in a compressed (zipped) folder with two files.



1. To unzip the folder: double click on folder.

☛ There are two files

 setup	Application	192 KB
 StreamPlayer	Windows Installer Package	37,779 KB

### 1.2.1 Recommendation

Select StreamPlayer to install the software onto the computer. This file offers complete software Application

and indows Installer package. Setup file is just the software app with no Windows Installer package.

1. Double-Click StreamPlayer file to install the software onto computer..

2. Follow the installation instructions.



**NOTE:** *If your computer asks permission to: "Allow program to make changes to your computer", either accept YES or contact IT Administrator for approval to install if required.*

☛ When installation is complete, the OR1™ mini StreamPlayer icon will be visible on your desktop



3. To create a shortcut for this app, drag this icon into the Quick Launch Toolbar at bottom of your desktop.

☛ It will create this Symbol/Icon



4. To Open the OR1™ mini StreamPlayer shortcut just click the stream symbol in toolbar.

### 1.3 How to Setup and Log into a Stream

The first login screen on the OR1™ mini Stream Media Player app will require your Hospital Network credentials.



1. Enter the same Username and Password assigned to you for your computer used within the hospital network. Click LOG IN to launch into the Viewing Page.

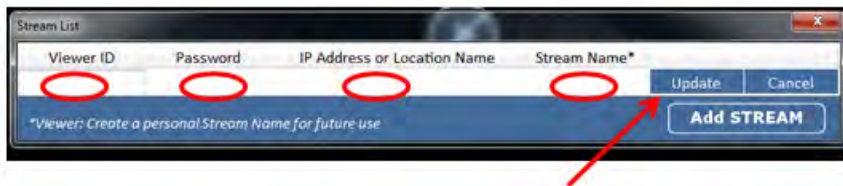
☛ The next page is the Viewing Page. To begin, obtain the login information from the hospital OR of the OR1™ mini room location you wish to view the stream from.



2. Select Add/Edit STREAMS to open the Stream List. This is where you will enter the login information.



3. Select ADD STREAM for each operating room. Each room will require streaming login information. Enter the criteria in each field:
  - Viewer ID
  - PASSWORD
  - IP ADDRESS/LOCATION
4. Create a Stream Name for the entered streaming criteria for future use.

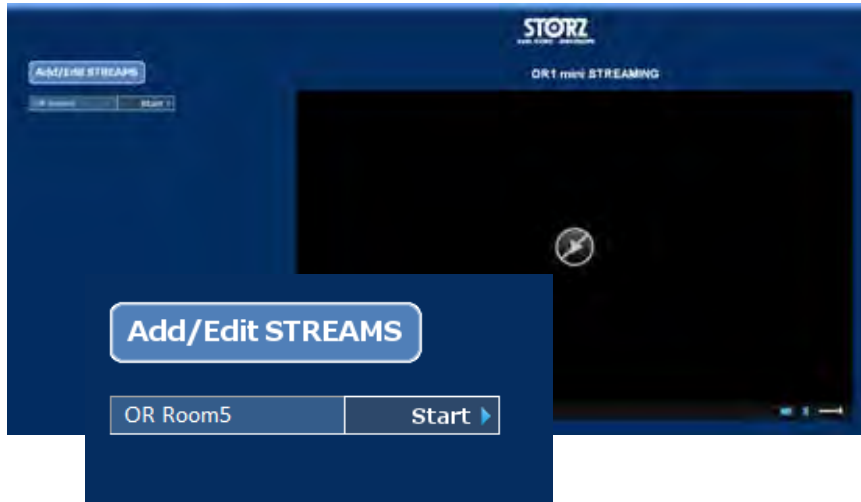


5. After entering all fields and creating a Stream Name, click UPDATE to "save". This saved name will appear on the Viewing Page.

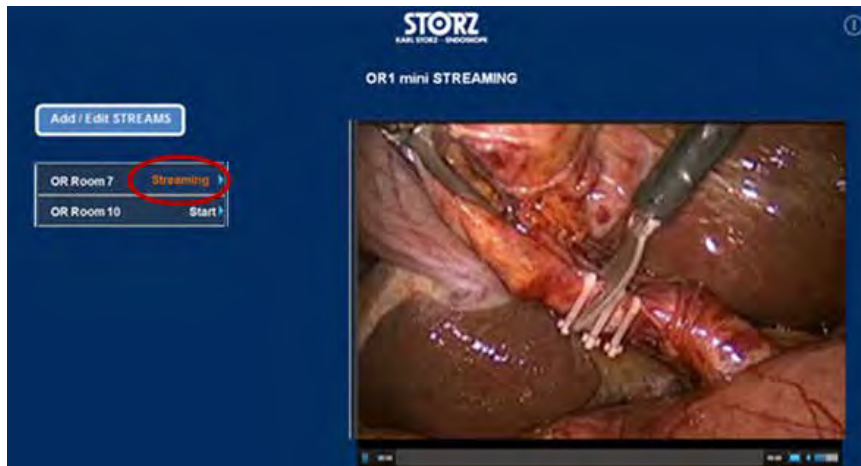
## 1.4 How to Use the OR1™ mini Streaming Media Player

### 1.4.1 Saving Stream Login Criteria and Connecting

To watch or log into a stream, click on the saved name on the Viewing Page for the location wishing to be viewed.



1. Click START and streaming will begin. START will turn to “STREAMING”.

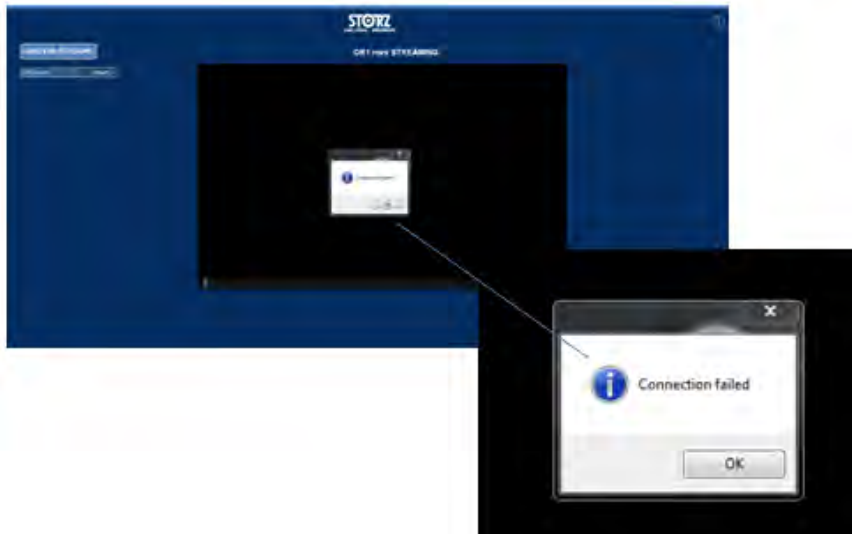


- ☛ If the Operating Room has not begun streaming a STANDBY symbol may appear. Otherwise, the streaming will begin.
- ☛ The Standby symbol can appear any time the Operating Room stops or suspends the streaming out of the room.



The Standby symbol is an indicator you are connected.



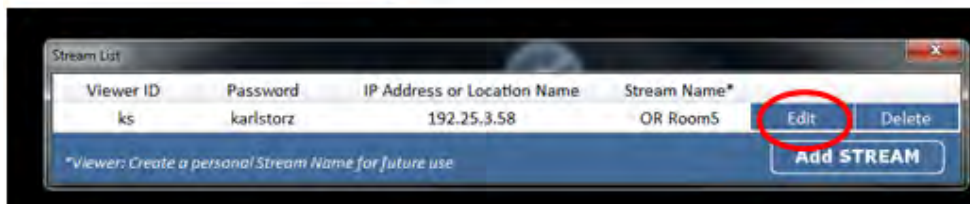
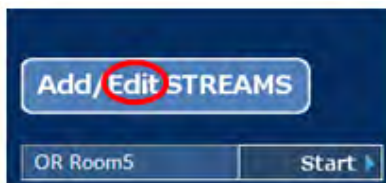


If your logon information is incorrect or the Operating Room has made changes to the streaming equipment configuration in the room, your connection may show a “Connection Failed”.

If you get this message, check the saved login information with the room you are trying to connect to.

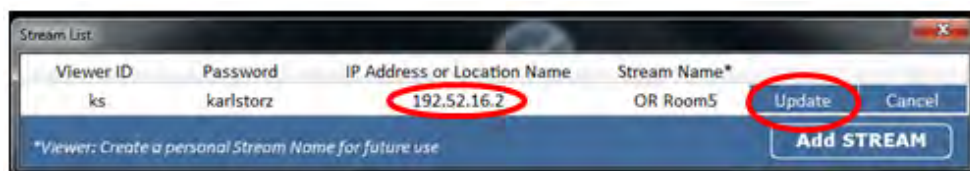
### 1.4.2 Changing Saved Stream Information

Editing “Saved Stream” information may be required from time to time if the room location needs to change login information.



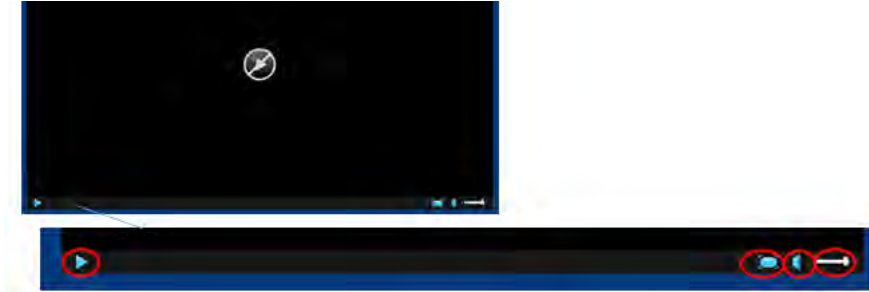
1. Use the same Add/Edit STREAM button to make changes as necessary.

☛ After making edits to the fields needing changing, the EDIT button becomes UPDATE button.



2. Select UPDATE to save the new information.

### 1.4.3 Features of the Streaming Media Player



Icon	Result
	ENLARGE the streamed image to a full screen or to return to smaller screen size.
	PAUSE (PLAY) stream
	RESUME (PLAY) stream
	Loudspeaker
	MUTE Loudspeaker
	Control volume

- ⓘ NOTE: When stream is "Paused" and then "Resumed" it will begin playing live from the moment it was resumed. Past streaming segment is not saved.
- ⓘ NOTE: If the room is not using the audio streaming feature there is no audio.  
Check with the hospital if they are using streaming audio.

### 1.4.4 How to log off

When FINISHED viewing a stream, you should either CLOSE or LOG OFF.



Icon	Result
	To log out of the streaming
	To exit the media player application

- ⓘ NOTE: The OR1™ mini Streaming media player app will log out automatically from 30 minutes of INACTIVITY.

## **1.5 TROUBLESHOOTING**

### **1.5.1 Concurrent Users**

The OR1™ mini Streaming Media Player logs into a streaming encoder in the OR through the hospital network. Viewers outside the OR shall be limited to a maximum of 10 concurrent users. Therefore, 10 individual users can log into one OR at the same time. Once the maximum viewers have been reached access will not be allowed.

If viewing the stream begins to be impacted due to the encoder reaching close to the maximum concurrent users, an adjustment in the settings in the OR may be able to increase the number of viewers. The OR would need to reduce Bitrate and stream resolution.

### **1.5.2 Stream Quality**

Viewers may experience varying stream quality based on many different things. The common areas that Stream quality can be affected by is:

- Load on the Hospital Network
- OR1™ mini settings
- Concurrent users on the Video Image Processor streaming encoder

Viewers may experience varying stream quality due to a total bandwidth capacity on a hospital network. Most hospitals will support higher capacity systems such as 1000Mbps (megabits per second), or 1G but others may have smaller capacity systems of 100Mbps. With low bandwidth or heavily use on bandwidth capacity, streaming could be impacted.

With a high number of concurrent users running on the hospital network the bandwidth could affect streaming quality.

The OR can make some adjustments to OR1™ mini Network Configuration settings (Bitrate and stream resolution) to help improve the stream quality for the conditions on the hospital network.

Image quality on OR1™ Streaming Media Player is always related with network or concurrent users.

### **1.5.3 Network Configurations**

The location of the room streaming over the hospital network is labeled in the network by an IP ADDRESS. However, the hospital can split or subnet the address. If the computer location connected to the hospital network is on a different subnet mask than the IP ADDRESS then a connection will not be possible.

The hospital IT administration should be contact to offer support to viewers who may be on different subnet mask locations so viewing the stream with the given IP ADDRESS can be accomplished.

### **1.5.4 Recommendation**

For the fastest resolution, it is recommended to first contact the local IT administration at the hospital for support if experiencing issues with connecting to the stream or check with the OR where the stream is originating from.





**STORZ**  
KARL STORZ—ENDOSKOPE



**KARL STORZ SE & Co. KG**

Dr.-Karl-Storz-Straße 34  
78532 Tuttlingen

Postfach 230  
78503 Tuttlingen

Germany

Telefon: +49 (0)7461 708-0  
Telefax: +49 (0)7461 708-105  
E-Mail: [info@karlstorz.com](mailto:info@karlstorz.com)  
[www.karlstorz.com](http://www.karlstorz.com)