

SILVER SCOPE® Veterinary Videoendoscopes

for use in Small and Large Animals



Unifying State-of-the-Art Technology, Ergonomics and Durability

See more, see better...

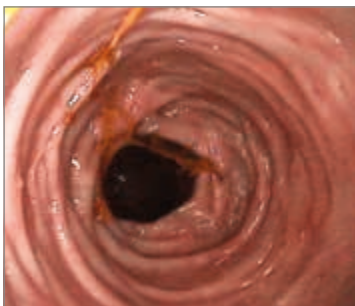
- **Digital processing technology**, high resolution CCD chips and an enhanced optical system produce images with unsurpassed clarity, brightness and depth of field
- **Dual light carriers** combined with an intelligent digital processor produce evenly illuminated images
- **8x magnification** provides large views of anatomy and pathology
- **Recessed air/water nozzles** with directional flow ensure effective distal lens cleaning

Scope every patient that needs it...

- **Extended length** facilitates duodenal examination in the largest breed dogs, gastroscopy in foals and urethroscopy in stallions
- **Reduced diameter** facilitates passage through the duodenum of cats, puppies and small breed dogs

Improve results...

- **Large working channel** accommodates bigger, more diagnostic biopsies and larger foreign body retrieval instruments
- **Deflection up to 210°** facilitates passage of the endoscope tip to otherwise “hard-to-reach” areas





Endoscopic images courtesy of Dr. Todd Tams, Veterinary Centers of America, Los Angeles, USA

Reduce fatigue...

- Newly designed, ergonomic handle ensures an easy, comfortable grip
- Insertion tube, constructed of a new “intelligent” plastic, with a special “silk-touch” surface facilitates precise guidance of the endoscope
- Programmable buttons conveniently located on handpiece allow endoscopist the option of controlling camera functions

Increase your bottom line...

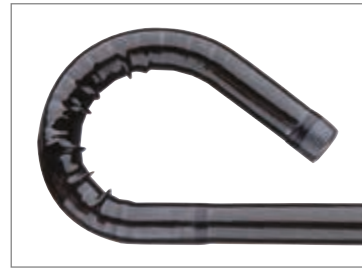
- KARL STORZ veterinary videoendoscopes use the same processor and light source as our fiberscopes and rigid telescopes, which translates into major savings for the busy vet practice with multiple endoscopy services
- SILVER SCOPE®s incorporate the latest design innovations to ensure durability
- Integrated leakage test port “pressure cap system” has been newly developed to prevent the possibility of liquid entering the endoscope
- Newly designed robust housing provides superior protection to the insertion tube
- Our optional, comprehensive ENDOPROTECT1 program will further protect your investment and minimize “down time” when repairs are necessary

Extended Length & Sleek Diameters are Ideal for Small and Large Animals

KARL STORZ SILVER SCOPE® veterinary videoendoscopes are ideally suited for numerous veterinary applications in both small and large animals. The large working channel facilitates bigger biopsies to ensure a more accurate diagnosis.

SMALL ANIMALS: Esophagogastroduodenoscopy, Colonoscopy, Tracheobronchoscopy, Rhinoscopy

LARGE ANIMALS: Laryngoscopy, Rhinoscopy, Guttural Pouch Endoscopy, Tracheobronchoscopy, Gastroscopy in foals, Urethroscopy in stallions



Indications for Gastrointestinal Endoscopy

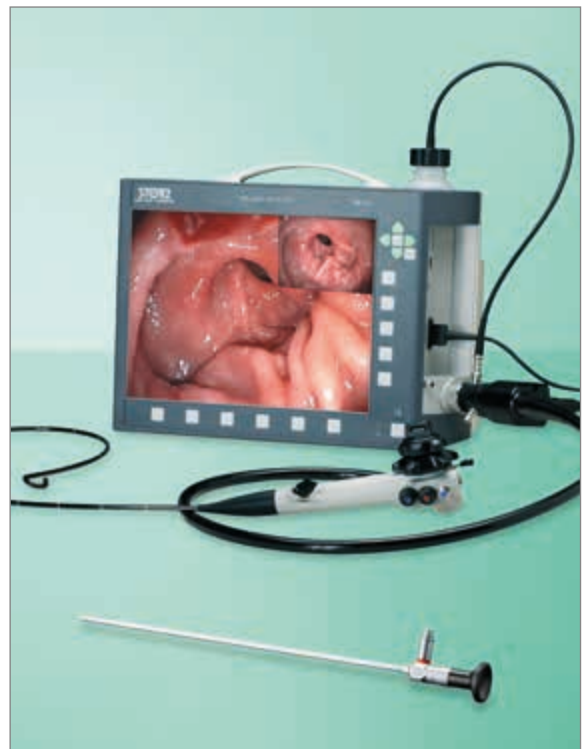
- Dysphagia
- Regurgitation
- Chronic vomiting
- Hematemesis
- Melena
- Chronic diarrhea
- Foreign bodies
- PEG tube placement
- Dyschezia
- Masses
- Obstruction
- Weight loss
- Poor appetite
- Tenesmus

Indications for Respiratory Endoscopy

- Chronic coughing
- Chronic lung disease
- Evaluate tracheal collapse
- Persistent halitosis
- Hemoptysis
- Difficult Intubation
- Neoplasia
- Bronchoalveolar Lavage (BAL)
- Culture
- Cytology
- Sneezing
- Nasal discharge
- Epistaxis
- Difficulty or noisy breathing
- Gagging or choking
- Rubbing or scratching nose
- Facial or nasal pain
- Facial swelling
- Foreign body inhalation
- Pre-purchase exam

	Sheath	Working Length	Working Channel	Deflection up	Deflection down	Left/right
Multi-Purpose Videoendoscope, Set 60714 PKSK/NKSK	7.9 mm	140 cm	2.8 mm	180°	110°	110°
Feline Videoendoscope, Set 60511 PKSK/NKSK	5.9 mm	110 cm	2 mm	210°	100°	120°

Compatible with TELE PACK VET X LED and Other KARL STORZ Imaging Systems



Endoscopic image courtesy of Dr. Claire Scicluna,
Equ'Institut, Paris, France

KARL STORZ

Videoendoscope Repair Exchange Service Program

The KARL STORZ repair exchange in advance program revolutionizes traditional service models by combining our pre-ship delivery program and technology upgrades at no additional cost. By using KARL STORZ service engineers, genuine KARL STORZ parts and proprietary procedures we ensure your videoendoscope will continue to perform to the same standards as the day that it was purchased. Repair exchange videoendoscopes uphold the original KARL STORZ quality and performance standards, eliminating the need to purchase a new device to ensure peak performance.

New Product Performance

All performance standards used in manufacturing and quality assurance testing of repair exchange videoendoscopes are identical to those used in manufacturing new KARL STORZ videoendoscopes. KARL STORZ does not provide any components to third parties.

Pre-Ship Program

This unique program significantly reduces downtime and the potential for cancelled cases by shipping a replacement videoendoscope as quickly as possible.

Technology Upgrades

Technology upgrades at no additional cost help manage obsolescence while eliminating the need to purchase a new device to ensure peak performance.

New Comprehensive Warranty

Every repair exchange videoendoscope comes with a NEW comprehensive two year warranty.

No Need For Loaners

The repair exchange program provides a more efficient and cost effective alternative to a loaner program which is laced with both time and cost inefficiencies. It eliminates the logistics in requesting, keeping track of and returning a loaner plus it relinquishes you from the liability of loss or damage.

Long-Term Financial Dividends

The repair exchange program will maintain your videoendoscope at its original specifications while eliminating unforeseen capital outlays.

Protect your investment and minimize downtime with fast replacement service and a NEW 2 year manufacturer's warranty

How it Works

1. If you have a damaged KARL STORZ product, call your local KARL STORZ distributor.
2. We will ship your exchange product as soon as possible.
3. Your account will be invoiced for an exchange according to the policy of your local KARL STORZ distributor.
4. Upon receipt of your exchange product, carefully re-package your damaged product and return it within five (5) business days.
5. Upon receipt of your damaged KARL STORZ product, a KARL STORZ technician will carefully inspect it to determine the nature and extent of damage, and adjust your invoice accordingly.





STORZ
KARL STORZ—ENDOSKOPE

THE DIAMOND STANDARD



KARL STORZ SE & Co. KG
Dr.-Karl-Storz-Straße 34, 78532 Tuttlingen/Germany
Postbox 230, 78503 Tuttlingen/Germany
Phone: +49 (0)7461 708-0
Fax: +49 (0)7461 708-105
E-Mail: vet@karlstorz.com
www.karlstorz.com