

LEROY Retractors for Laparoscopic Colorectal Surgery



LEROY Retractors for Laparoscopic Colorectal Surgery

Advanced laparoscopic surgery, and especially laparoscopic rectal surgery, is technically challenging.

One of the key requirements for successfully performing this procedure while respecting oncological principles is an optimal exposure and, consequently, a good visualization of the surgical site. Particularly for laparoscopic colorectal surgery involving a complex anatomy (especially in obese male patients), the use of retractors is vital in order to clearly visualize various structures and to enable dissection.

In conjunction with KARL STORZ, various retractor types were developed to suit various anatomical conditions. The new generation of extremely stable LEROY retractors (diameter 10 mm) is easy to use and works with the retraction principle familiar from open surgery.

The finger-shaped retractors are introduced in extended form. A rotating wheel on the proximal end allows various angles. The distal tip can be angled to max. 90°.

When introduced via a sub- or suprapubic trocar, the retractors allow anterior traction without increasing pressure on the abdominal wall.

Thanks to the new generation of endoscopic colorectal retractors from KARL STORZ, our conversion rate to open surgery is less than 3% while achieving oncologically correct resection in nearly 100% of cases.



J. LEROY, M.D.
Strasbourg, France



LEROY Retractors: Overview and Examples of Application

Unlike conventional retractors, the LEROY retractors for laparoscopic colorectal surgery are perfectly adapted for the exposure of anatomical planes (especially in male patients) without interfering with dissection.



The I-retractor is useful for **retracting narrow zones** without damaging the retracted tissue.



Your link to Video 1



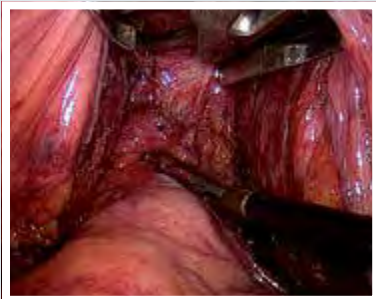
The V-retractor is useful for the **ventral retraction of the prostate**, allowing easier introduction of the scope thanks to the possibility of turning the retractor handle laterally.



Your link to Video 2



The T-retractor enables **wider retraction**, for example, in the retro-prostatic region.



Your link to Video 3



The H-retractor features parallel jaws with atraumatic tips that enable wide retraction similar to that obtained with the retractor used in open surgery.

The H-retractor is very useful for the dissection of a small pelvis in female patients.



The H-retractor can be used both as a retractor and a grasping forceps. The atraumatic silicone-padded tips at the distal end allow atraumatic grasping of fragile tissue such as the mesorectum. The CLICKLINE handle with locking mechanism enables retraction to be maintained during dissection.

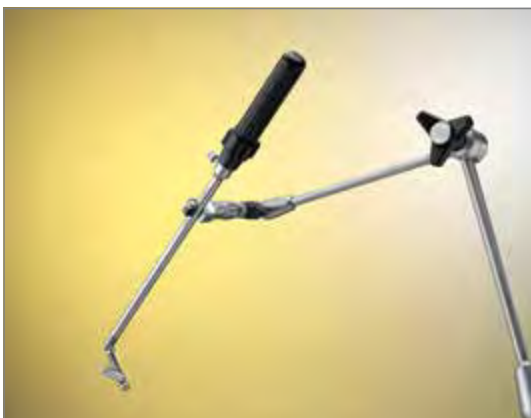
It is particularly useful for grasping and retracting the lower rectum.

LEROY Retractors: Special Features

All of the finger-shaped LEROY Retractors can be angled and spread with one hand, making the LEROY Retractors simple and intuitive instruments.



The LEROY Retractors may be connected to a handle that enables the surgeon to reproduce the same traction as that performed with a retractor in open surgery.



All LEROY Retractors can easily be handled with KARL STORZ Holding systems and if required being fixed, thus allowing surgery without an additional assistant at the table.

LEROY H-Retractor



33541 H

CLICKLINE LEROY H-Retractor,
long jaws with silicone pads 30510 PY on the distal tip,
double action jaws, jaws open in parallel,
autoclavable, ratchet engages while handle opens,
size 10 mm, length 36 cm

including:

Metal Handle, with disengageable ratchet

Outer Tube, insulated

H-Retractor Insert

Silicone Pads, package of 6



30623 HA

LEROY Articulating H-Retractor,
long jaws, double action jaws,
jaws open in parallel, bendable to 90°,
autoclavable, size 10 mm, length 36 cm

LEROY T-Retractor



30623 T

LEROY **T-Retractor**, with rotation wheel on the proximal end to bend and drive out the distal tip, with LUER-Lock connector for cleaning, **autoclavable**, size 10 mm, length 30 cm

LEROY V-Retractor



30623 VL

LEROY **V-Retractor**, with rotation wheel on the proximal end to bend and drive out the distal tip, with LUER-Lock connector for cleaning, **autoclavable**, size 10 mm, length 30 cm

LEROY I-Retractor



30623 I

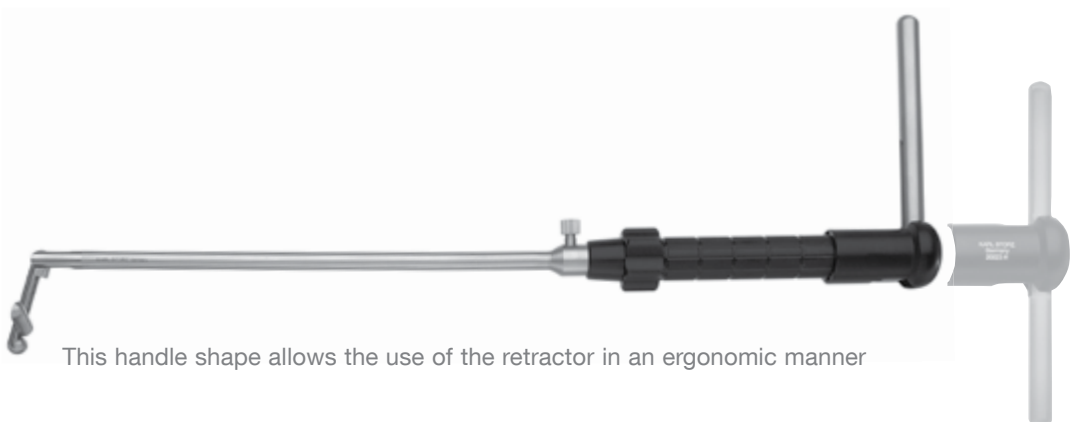
LEROY I-Retractor, with rotation wheel on the proximal end to bend the distal tip, with Luer-Lock connector for cleaning, **autoclavable**, size 10 mm, length 36 cm

Handle Attachment for LEROY Retractors



30623 H

Handle Attachment, autoclavable, for use with LEROY retractors



This handle shape allows the use of the retractor in an ergonomic manner

KARL STORZ Holding Systems



- 28272 KKB **Holding System, autoclavable**, with quick release coupling KSLOCK including:
- Socket**, to clamp to the OR table, for European and US standard rails, also suitable for rails 25 x 10 up to 35 x 8 mm, with lateral clamp for height adjustment of the articulated stand
 - Articulated Stand**, reinforced version, L-shaped, with one central clamp for all five joint functions, height 48 cm, swivel range 52 cm, with quick release coupling KSLOCK (female)
 - Clamping Jaw**, metal, with axial intake, clamping range 4.8 up to 12.5 mm, with quick release coupling KSLOCK (male), for use with instrument and telescope sheaths

KARL STORZ Holding Systems



28272 EH **ENDOCRANE®**, piezoregulated holding arm, including stand including:

Socket, to clamp to the OR table

Control Unit

Cover, sterile, package of 20

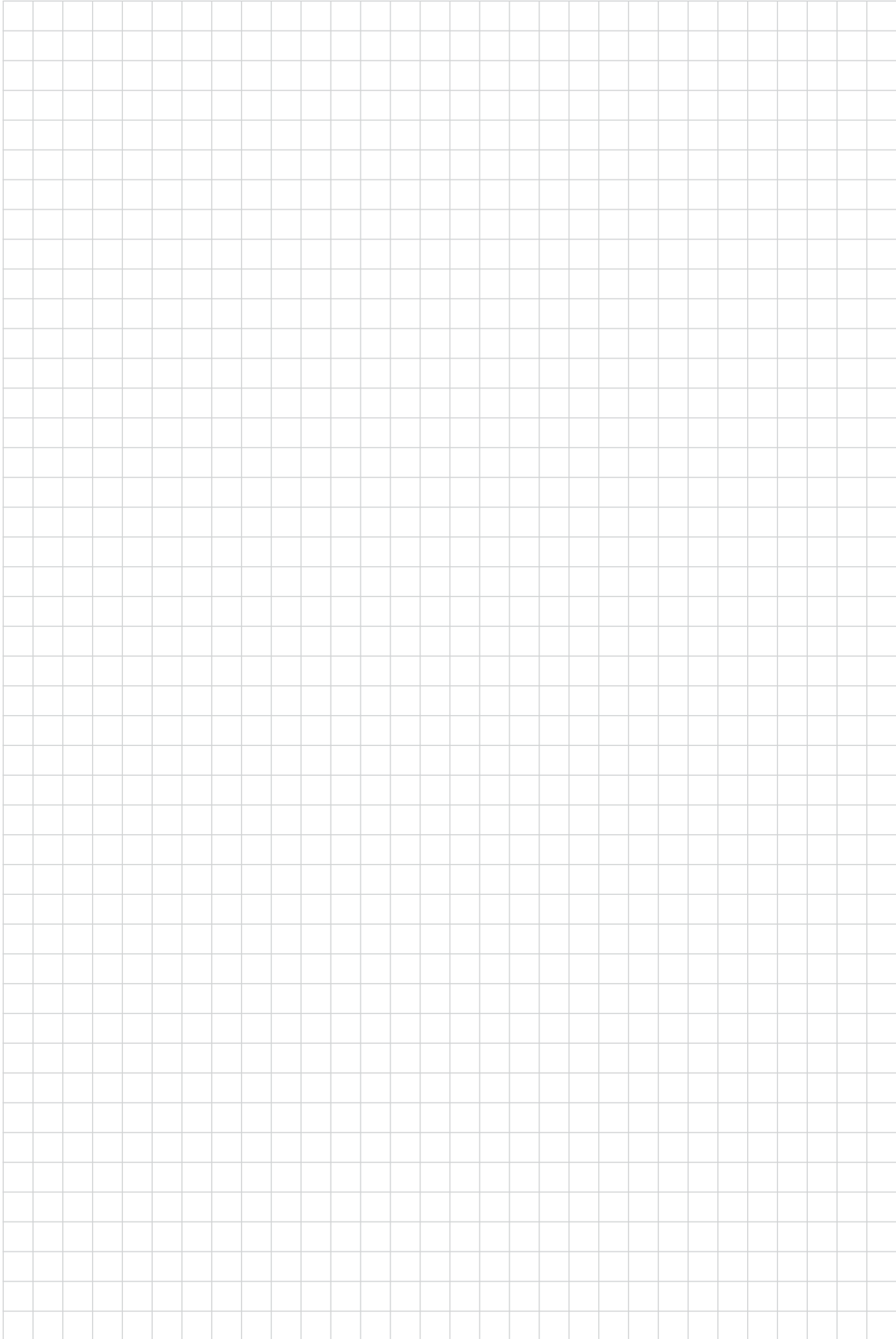
Spring Balance

Mains Cord

Case

28272 UKN **Clamping Jaw**, metal, for use with instrument and telescope sheaths, clamping range 4.8 up to 12.5 mm, with fastener: KSLock (male)

Notes



STORZ
KARL STORZ—ENDOSKOPE

THE DIAMOND STANDARD

KARL STORZ Endoscopy-America, Inc.
2151 East Grand Avenue
El Segundo, CA 90245-5017, USA
Phone: +1 424 218-8100
Phone toll free: 800 421-0837 (US only)
Fax: +1 424 218-8525
Fax toll free: 800 321-1304 (US only)
E-Mail: info@ksea.com

KARL STORZ SE & Co. KG
Dr.-Karl-Storz-Straße 34, 78532 Tuttlingen/Germany
Postfach 230, 78503 Tuttlingen/Germany
Phone: +49 (0)7461 708-0
Fax: +49 (0)7461 708-105
E-Mail: info@karlstorz.com

www.karlstorz.com



www.health-made-in-germany.com