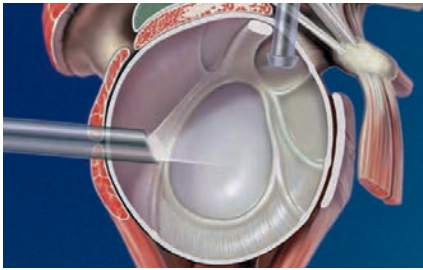


# SPS – Secure Portal System

## Portal Management in Shoulder Arthroscopy



## SPS – Secure Portal System

The SPS – Secure Portal System facilitates the positioning of the portals during shoulder arthroscopy and offers better support for the introduced trocar sheaths by protecting the surrounding soft tissue.

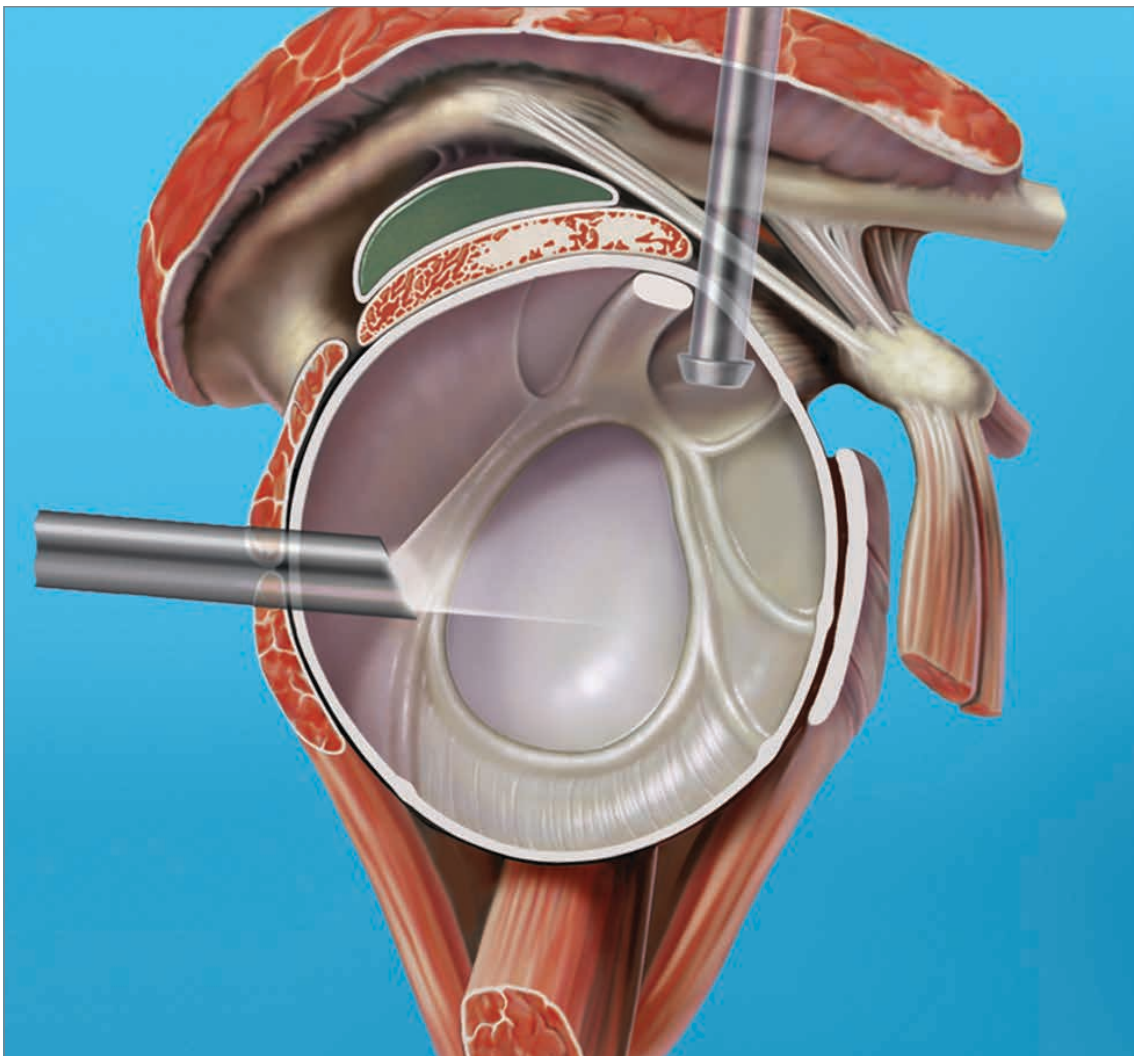
The atraumatic and targeted insertion of the positioning needle makes it possible to introduce both the subsequent dilation system as well as the trocar sheath system into the shoulder joint without any problems. It is possible to probe the target structures in this joint in advance with the positioning needle, whereby it is also possible to confirm

the correct position of the trocar sheath to be inserted. If the positioning needle is unable to reach the desired areas, it can be easily repositioned without trauma to the soft tissue.

The individual steps during the insertion of the trocar sheath system are arthroscopically controlled, which prevents damage when the joint is entered.



KARL STORZ ist noch bis Ende 2015 Förderpartner der Deutschen Vereinigung für Schulter- und Ellenbogenchirurgie (DVSE).



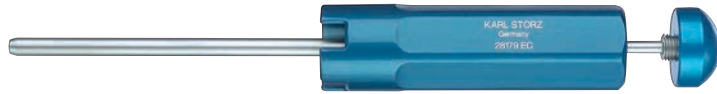
# SPS – Secure Portal System

## Recommended Sets



28179 EB

28179 EO



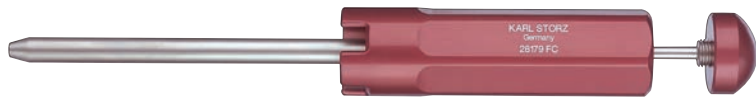
28179 EC

28179 EP



28179 FB

28179 FO



28179 FC

28179 FP



Positioning Needle

Obturator

Guide Wire



Dilator



28179 DF



28179 SA/SB



28179 DG

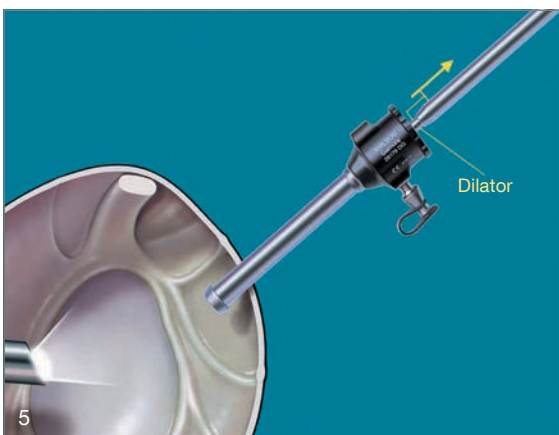
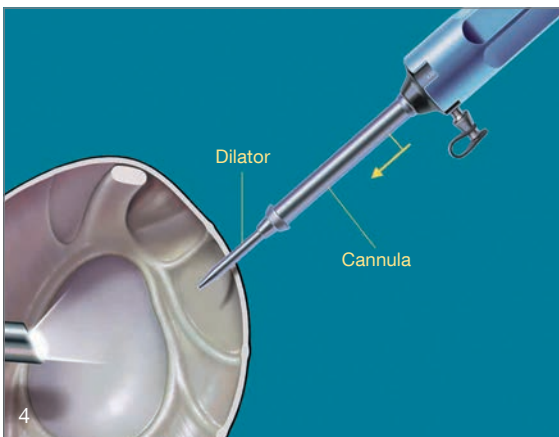
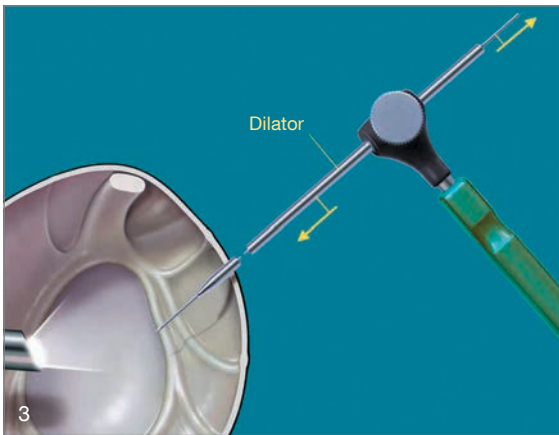
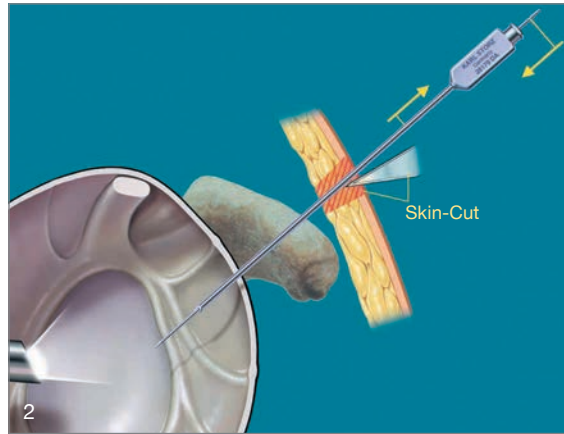
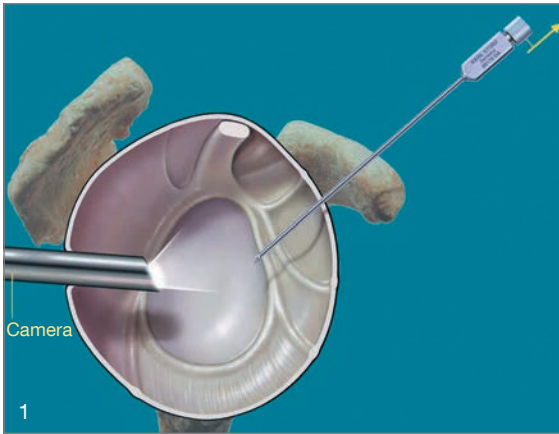


28179 SC/SD



28179 OG

The sets include Handle 28179 DF, which makes it easier to introduce Dilator 28179 DL. Threaded Cannulas 28179 SA – SD are for single use and are supplied unsterile.



**Fig. 1**

- The positioning needle with a diameter of 1.5 mm is introduced transcutaneously into the joint. The position must be corrected until the positioning needle penetrates the capsule at the desired point in the correct direction.

- The obturator is removed from the positioning needle.

**Fig. 2**

- A Kirschner wire with a diameter of 0.9 mm is introduced through the positioning needle into the joint.
- The positioning needle is removed from the joint while the Kirschner wire is left in position. Skin incision along Kirschner wire corresponding to cannula size

**Fig. 3**

- A cannulated dilator is pushed along the Kirschner wire into the joint, using a handle.
- The Kirschner wire is removed.

**Fig. 4**

- The trocar sheath that was inserted into the handle for easy handling is advanced along the dilator.
- The soft tissue is hereby dilated until the trocar sheath snaps safely in place behind the capsule.

**Fig. 5**

- Then the handle can be pulled off the trocar sheath. The trocar sheath then is ready for use and remains safely in the joint.

## SPS – Secure Portal System

28179 E	<b>Basic Set for SPS – Secure Portal System</b> including: <b>Positioning Needle</b> <b>Obturator</b> <b>Guide Wire</b> , package of 6 <b>Dilator</b> <b>Handle</b> , for Dilator 28179 DL <b>Valve Housing</b> <b>Set of Gaskets</b> , unsterile, package of 10
---------	--

A workable instrument set requires the following supplementary sets:

### 1. For inner diameter 6.1 mm, working length 7 cm

28179 EB	<b>Dilator</b> , with handle
28179 EO	<b>Obturator</b> , diameter 4 mm, for use with Dilator 28179 EB
28179 SA	<b>Cannula</b> , with thread, transparent, for single use

### 2. For inner diameter 6.1 mm, working length 8.5 cm

28179 EC	<b>Dilator</b> , with handle
28179 EP	<b>Obturator</b> , diameter 4 mm, for use with Dilator 28179 EC
28179 SB	<b>Cannula</b> , with thread, transparent, for single use

### 3. For inner diameter 8.25 mm, working length 7 cm

28179 FB	<b>Dilator</b> , with handle
28179 FO	<b>Obturator</b> , diameter 4 mm, for use with Dilator 28179 FB
28179 SC	<b>Cannula</b> , with thread, transparent, for single use

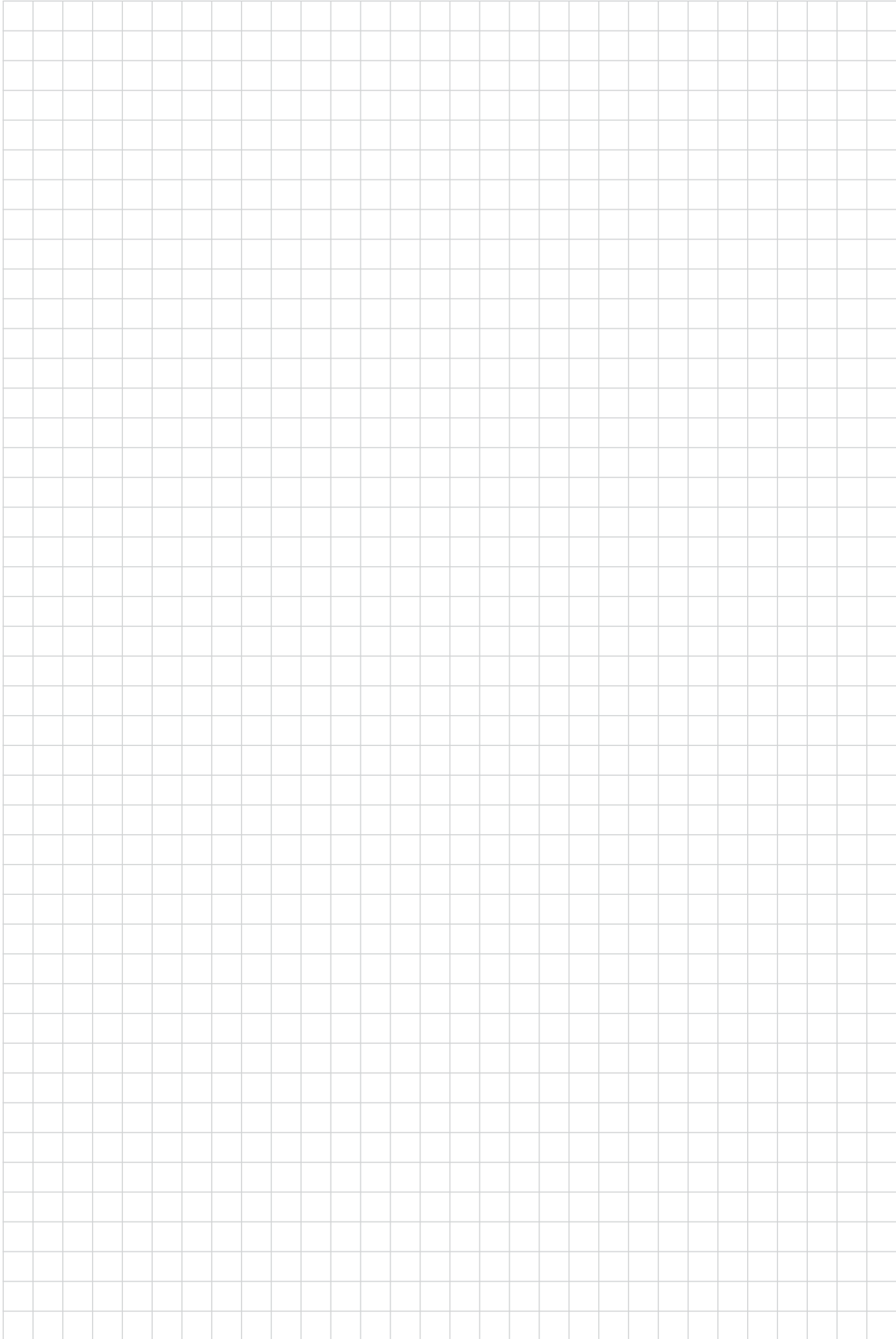
### 4. For inner diameter 8.25 mm, working length 8.5 cm

28179 FC	<b>Dilator</b> , with handle
28179 FP	<b>Obturator</b> , diameter 4 mm, for use with Dilator 28179 FC
28179 SD	<b>Cannula</b> , with thread, transparent, for single use

### Optional:

28179 GS	<b>Set of Gaskets</b> , 10x 2 sealing caps, sterile, for use with Valve Housing 28179 DG/OG
28179 GU	<b>Set of Gaskets</b> , 10x 2 sealing caps, unsterile, for use with Valve Housing 28179 DG/OG
28179 OG	<b>Valve Housing</b> , without LUER-Lock, for use with Cannulas and Set of Gaskets 28179 GU/GS

# Notes







THE DIAMOND STANDARD

KARL STORZ Endoscopy-America, Inc.  
2151 East Grand Avenue  
El Segundo, CA 90245-5017, USA  
Phone: +1 424 218-8100  
Phone toll free: 800 421-0837 (US only)  
Fax: +1 424 218-8525  
Fax toll free: 800 321-1304 (US only)  
E-Mail: [info@ksea.com](mailto:info@ksea.com)

KARL STORZ SE & Co. KG  
Dr.-Karl-Storz-Straße 34, 78532 Tuttlingen/Germany  
Postbox 230, 78503 Tuttlingen/Germany  
Phone: +49 (0)7461 708-0  
Fax: +49 (0)7461 708-105  
E-Mail: [info@karlstorz.com](mailto:info@karlstorz.com)

[www.karlstorz.com](http://www.karlstorz.com)