



Laparoscopy and Thoracoscopy in Small Animals

Laparoscopy and Thoracoscopy in Dogs and Cats

The 5 mm HOPKINS® telescope from KARL STORZ provides the small animal practitioner with bright, enlarged views of all abdominal and thoracic organs through a tiny incision.

Biopsy and/or aspiration of the following organs can be achieved: liver, kidney, pancreas, spleen, gall bladder, lymph nodes, lung and gastrointestinal tract.

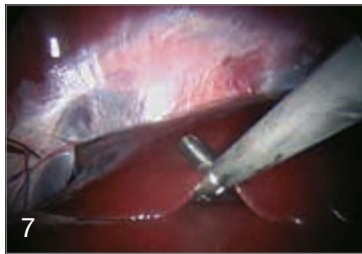
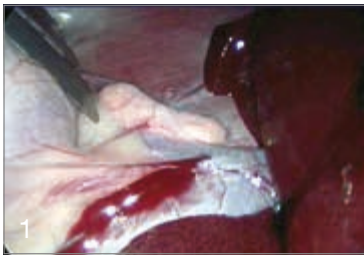


Fig. 1
Adrenal gland

Fig. 2
Cirrhotic liver

Fig. 3
Cryptorchid testicle

Fig. 4
Feline gallbladder:
hepatic lipidosis

Fig. 5
Laparoscopic-assisted
gastropexy

Fig. 6
Pericardial resection

Fig. 7
Liver biopsy

Fig. 8
Pancreatic biopsy

Fig. 9
Thoracic mesothelioma

Fig. 10
Urinary bladder

Endoscopic photographs courtesy of Dr. David Twedt, Colorado State University.



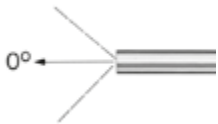
Ancillary instrumentation, such as biopsy forceps, graspers and scissors may be placed through additional 5 mm portals. This allows not only documentation and biopsy of abnormalities, but also a number of therapeutic minimally invasive surgical interventions including the following:

- Cryptorchid castration
- Prophylactic gastropexy
- Ovariohysterectomie
- Cystotomy
- Jejunostomy/gastrostomy tube placement
- Adrenalectomy
- Pericardectomy
- Partial lung lobectomy
- Nephrectomy
- Insulinoma removal
- Partial pancreatectomy
- Resolution of gastric dilatation with volvulus
- Lap-assisted cystostomy
- Lap-assisted cystopexy

Laparoscopy and thoracoscopy will vastly improve your diagnostic and surgical accuracy, while reducing patient recovery time and improving client satisfaction.

HOPKINS® Laparoscopes/Thorascopes

Multiple Puncture Approach
Telescopes, diameter 5 mm
Trocars size 6 mm



62046 AA

HOPKINS® Straight Forward Telescope 0°, enlarged view, diameter 5 mm, length 29 cm, **autoclavable**, fiber optic light transmission incorporated, color code: green



62046 BA

HOPKINS® Forward-Oblique Telescope 30°, enlarged view, diameter 5 mm, length 29 cm, **autoclavable**, fiber optic light transmission incorporated, color code: red

TERNAMIAN EndoTIP Cannula with Multifunctional Valve



60160 TKR TERNAMIAN **ENDOTIP Cannula**, with thread and rotating insufflation stopcock, size 6 mm, working length 8.5 cm, color code: black including:
Cannula
Multifunctional Valve
Seal Set 50/4
Mandrel, for opening automatic valves

60103 TMR TERNAMIAN **ENDOTIP Cannula**, with thread and rotating insufflation stopcock, size 11 mm, working length 10.5 cm, color code: green including:
Cannula
Multifunctional Valve
Seal Set 60/10
Mandrel, for opening automatic valves



62141 DB **Reducer**, 11/5 mm

Trocar with Multifunctional Valve



- 62160 WZ **Trocar**, with pyramidal tip, with insufflation stopcock, size 6 mm, working length 8.5 cm
color code: black-white
including:
Cannula, without valve,
Trocar only
Multifunctional Valve
- 62103 WZ **Trocar**, with pyramidal tip, with insufflation stopcock, size 11 mm, working length 8.5 cm,
color code: green-white
including:
Cannula, without valve,
Trocar only
Multifunctional Valve




Lightweight Ribbed Trocar and Cannula

Ribbed cannula reduces slippage out of the body wall


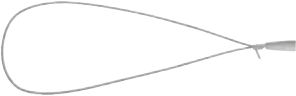



- 62160 GSK **Trocar**, with sharp tip, with LUER-Lock connector for insufflation, size 6 mm, working length 6 cm,
color code: black-green
including:
Cannula, with thread
Trocar only
Silicone Leaflet Valve
- 62160 GBK **Same**, with blunt tip

Diagnostic Instruments

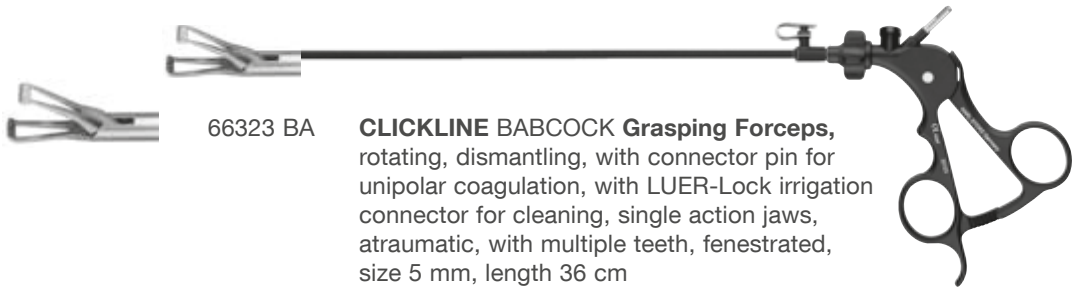
-  62175 T **Palpation Probe**, with cm-markings, size 5 mm, length 36 cm
-  66321 DB **CLICKLINE Dissecting and Biopsy Forceps**, rotating, dismantling, with connector pin for unipolar coagulation, with LUER-Lock irrigation connector for cleaning, single action jaws, size 5 mm, length 36 cm
including:
Plastic Handle, without ratchet
Metal Outer Sheath, insulated
Forceps Insert
-  66323 ML **CLICKLINE KELLY Dissecting and Grasping Forceps**, rotating, dismantling, with connector pin for unipolar coagulation, with LUER-Lock irrigation connector for cleaning, double action jaws, long, size 5 mm, length 36 cm
including:
Plastic Handle, with hemostat style ratchet
Metal Outer Sheath, insulated
Forceps Insert

Suture, Ligature

-  66321 EH **CLICKLINE Hook Scissors**, rotating, dismantling, with connector pin for unipolar coagulation, with LUER-Lock irrigation connector for cleaning, single action jaws, size 5 mm, length 36 cm
including:
Plastic Handle, without ratchet
Metal Outer Sheath, insulated
Scissors Insert
-  26172 AE **Endo-Loop Ligature**, with ROEDER knot, for bleeding stumps, with absorbable synthetic suture, for single use, sterile, USP 0, size 3 mm, length 33 cm, package of 12
-  26596 SK **KÖCKERLING Knot Tier**, for extracorporeal knotting, size 5 mm, length 36 cm

For instruments in longer and shorter versions, see catalog Veterinary Endoscopy, Small Animals.

Surgical Instruments



66323 BA

CLICKLINE BABCOCK Grasping Forceps, rotating, dismantling, with connector pin for unipolar coagulation, with LUER-Lock irrigation connector for cleaning, single action jaws, atraumatic, with multiple teeth, fenestrated, size 5 mm, length 36 cm including:

Plastic Handle, with hemostat style ratchet

Metal Outer Sheath, insulated

Forceps Insert



33321 FG

CLICKLINE Grasping Forceps, rotating, dismantling, insulated, with connector pin for unipolar coagulation, with LUER-Lock irrigation connector for cleaning, double action jaws, atraumatic, size 5 mm, length 36 cm including:

Plastic Handle, without ratchet

Metal Outer Sheath, insulated

Forceps Insert



66321 MW

CLICKLINE Scissors, rotating, dismantling, insulated, with connector pin for unipolar coagulation, with LUER-Lock irrigation connector for cleaning, double action jaws, serrated, curved, conical, size 5 mm, length 36 cm including:

Plastic Handle, without ratchet

Metal Outer Sheath, insulated

Scissors Insert



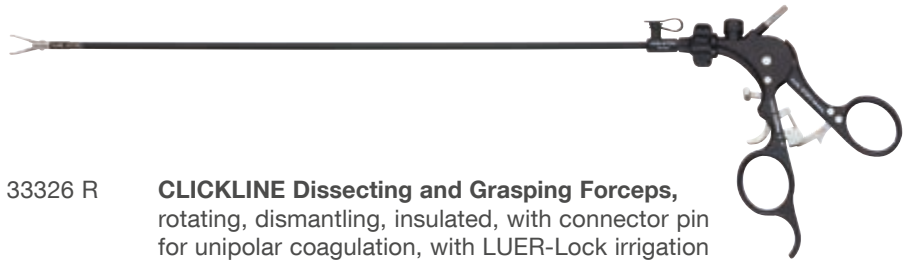
33533 DU

CLICKLINE DUVAL Grasping Forceps, rotating, dismantling, without connector pin for unipolar coagulation, with irrigation LUER-Lock connector for cleaning, double action jaws, size 10 mm, length 36 cm
including:
Metal Handle, with hemostat style ratchet
Outer Sheath, insulated
Forceps Insert



33326 R

CLICKLINE Dissecting and Grasping Forceps, rotating, dismantling, insulated, with connector pin for unipolar coagulation, with LUER-Lock irrigation connector for cleaning, double action jaws, right-angled, size 5 mm, length 36 cm
including:
Plastic Handle, with disengageable ratchet
Metal Outer Sheath
Forceps Insert



33541 RG

CLICKLINE Dissecting and Grasping Forceps, rotating, dismantling, without connector pin for unipolar coagulation, with LUER-Lock irrigation connector for cleaning, double action jaws, right-angled, size 10 mm, length 36 cm
including:
Metal Handle, with disengageable ratchet
Metal Outer Sheath
Forceps Insert



30623 F

Fan Retractor, dismantling, distendable, size 5 mm, length 36 cm

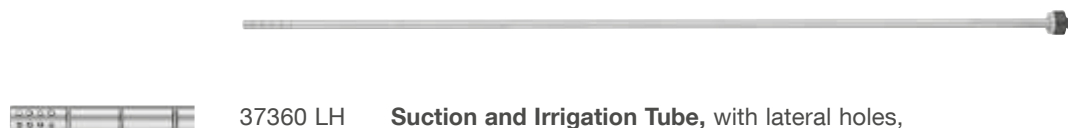


30623 FP

Same, size 10 mm

For instruments in longer and shorter versions, see catalog Veterinary Endoscopy, Small Animals.

Suction and Irrigation Tubes



37360 LH **Suction and Irrigation Tube**, with lateral holes, size 5 mm, length 36 cm, for use with suction and irrigation handles



37370 SC **Coagulating and Dissecting Electrode**, with suction channel, insulated sheath, with connector pin for unipolar coagulation, size 5 mm, length 36 cm



37370 DL **Same**, L-shaped



26173 BN **Suction and Irrigation Tube**, with lateral holes, with two-way stopcock for single-hand control, size 5 mm, length 36 cm

Optional Suction Tube Accessories



30804 **Handle with Trumpet Valve**, for suction or irrigation, autoclavable, for use with 5 mm coagulating suction tubes, 3 and 5 mm suction and irrigation tubes



20300042 **Silicone Tubing Set**, for suction, sterilizable

Insufflation



624325 01 CO₂ ENDO-ARTHROFLATOR-VET,
power supply 100-240 VAC, 50/60 Hz,
including:
Silicone Tubing Set, sterilizable
Universal Wrench
Gas Filter, sterile, package of 10

The pressure hose and CO₂ bottles must be ordered separately



62120 J VERESS Pneumoperitoneum Needle,
with spring-loaded blunt stylet, LUER-Lock,
autoclavable, diameter 2.1 mm, length 10 cm

Suction and Irrigation Device

The VETPUMP® 2 suction and irrigation device makes abdominal and thoracic lavage easier than ever before.

More powerful, more precise and safer than other units, the VETPUMP® 2 is the ultimate device for flushing and suction during otoscopy, gastroscopy, laparoscopy and more.



- 69321601 VETPUMP® 2**, adjustable suction-irrigation pump,
power supply: 100/120/230/240 VAC, 50/60Hz
including:
Mains Cord, EU-version
Mains Cord, US-version
Irrigation Bottle Holder
Suction Bottle Holder
Irrigation Bottle
Suction Bottle
Bottle Cap, for irrigation bottle
Botle Cap, for suction bottle

VETPUMP® 2 Accessories for Abdominal / Thoracic Lavage



69 3200 33 **Silicone Tubing Set**, irrigation-suction from unit to bottles, **autoclavable**



69811 **Instrument Tubing Set, autoclavable**, to connect VETPUMP® 2 bottles to Handle 37112 A



37112 A **Handle**, straight, with clamping valve, for suction and irrigation, **autoclavable**, for use with 5 and 10 mm suction and irrigation tubes



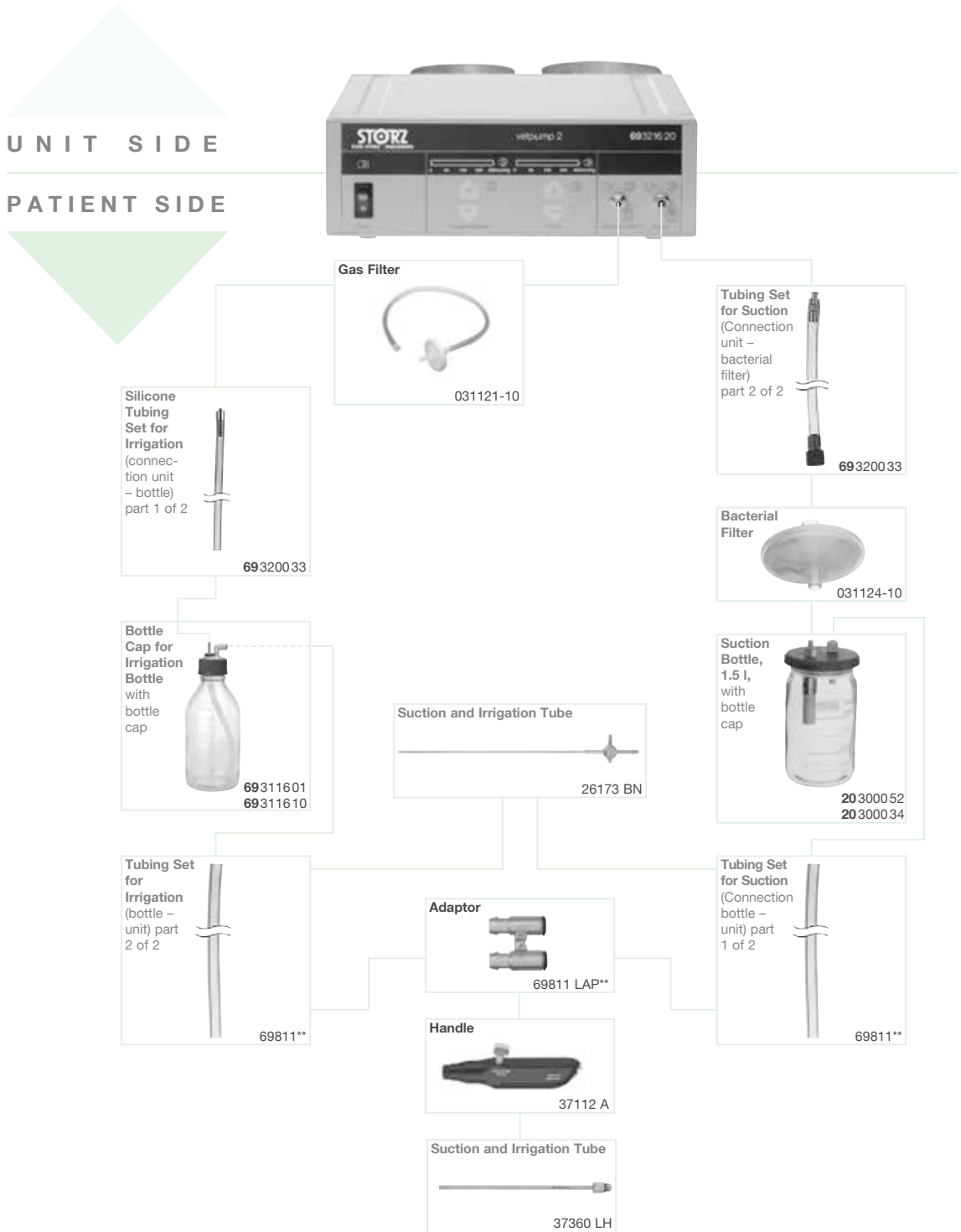
69811 LAP **Adaptor**, package of 5, for use with Handle 37112 A for suction and irrigation as well as Instrument Tubing Set 69811



031121-10 **Gas Filter**, for single use, with male LUER-lock connector for attachment to irrigation connector on unit, sterile, package of 10

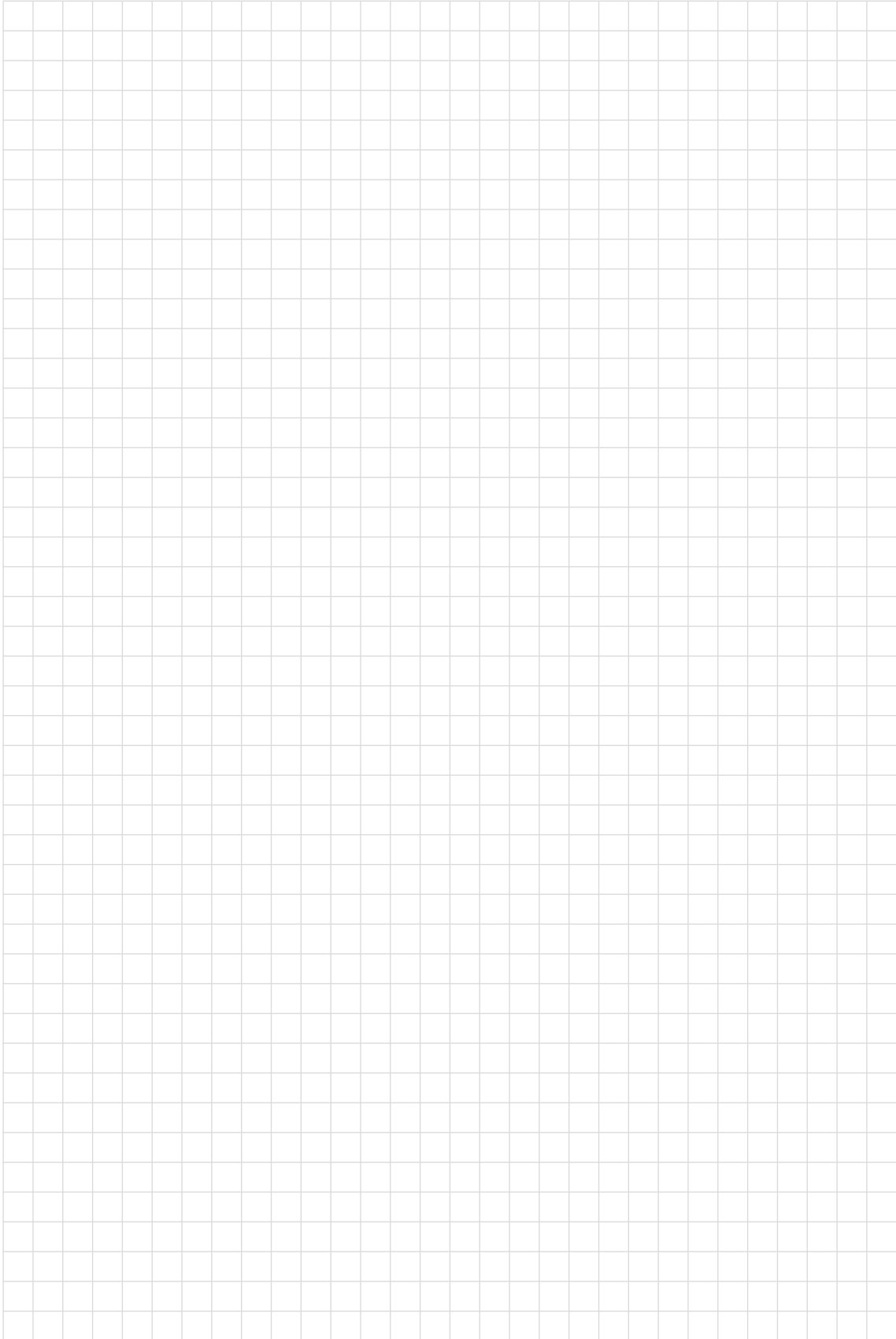
VETPUMP® 2

System Components



** Remove black plastic fitting from Tubing Set 69811 and replace with Adaptor 69811 LAP.

Notes





STORZ
KARL STORZ—ENDOSKOPE

THE DIAMOND STANDARD



KARL STORZ SE & Co. KG
Dr.-Karl-Storz-Straße 34, 78532 Tuttlingen/Germany
Postbox 230, 78503 Tuttlingen/Germany
Phone: +49 (0)7461 708-0
Fax: +49 (0)7461 708-105
E-Mail: vet@karlstorz.com
www.karlstorz.com