

Small Animal Arthroscopy



Canine Arthroscopy



Arthroscopy is the standard method of performing most joint surgeries in people and horses. With recent advances in instrumentation and technique, arthroscopy is rapidly gaining acceptance in canine joint surgery as well. The advantages over traditional arthrotomy include improved access to joint structures, magnification of lesions, therapeutic flushing and faster patient recovery. KARL STORZ has worked for several years with leading veterinary surgeons in the development of the instrumentation found in these pages.

Indications – Forelimb

Shoulder

- Osteochondral lesions (OCD, articular fractures, of the border of the glenoid)
- Subluxation of the shoulder
- Evaluation of shoulder luxations
- Biceps tendon lesions, tendinitis, partial or complete tears
- Tenosynovitis of the biceps tendon
- Synovial biopsies
- Articular mice
- Septic arthritis
- Lesions of the glenoid labrum
- Tendinitis, rupture of the subcapsular muscle tendon
- Excision of articular mice
- Synovectomy
- Articular trauma
- Septic arthritis
- Elbow pain of unknown origin

Carpus

- Cartilage fractures
- Carpal fractures without displacement (distal radius, radial carpal bone)
- Carpal trauma
- Synovial biopsies
- Septic arthritis

Elbow

- Excision of the fragmented coronoid process
- OCD of the humeral condyle
- Treatment of arthritis of the elbow
- Treatment of the nonunion of the anconeal process

Indications – Hind limb

Hip

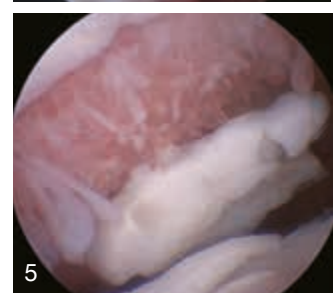
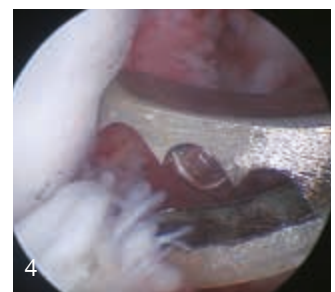
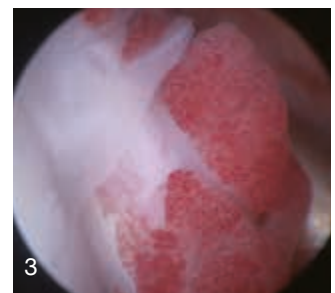
- Labral lesions
- Mice
- Articular trauma
- Preoperative evaluation of hip dysplasia before triple pelvic osteotomy (TPO)
- Postoperative evaluation of TPO
- Postoperative evaluation of treatment of hip luxation and fractures
- Degenerative joint disease
- Septic arthritis
- Osteochondromatosis
- Tear of the ligament of the femoral head

Knee

- Preoperative evaluation of torn cruciate ligaments
- The stable osteoarthritic non-inflammatory stifle
- Lesions of the common digital extensor
- Lesions of the popliteal ligament
- Partial tear of the LCA
- Postoperative evaluation of cruciate ligament repair
- Differentiation between torn caudal cruciate ligament versus cranial cruciate ligament
- Cartilaginous lesions (fractures, OCD)
- Diagnosis of lesions associated with traumatic tears of the cruciate ligament
- Septic arthritis
- Synovial biopsies (polyarthritis, synovitis)
- Articular tumors

Tarsus

- Excision of OCD fragments of the talus
- Tarsal arthritis
- Tarsocrural instability



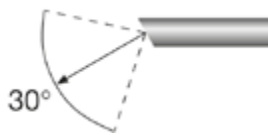
- Fig. 1 A classic medial coronoid process fragment on the lateral margin of the medial coronoid process
- Fig. 2 Removing a small fragment from the medial coronoid process
- Fig. 3 Marked villus synovial reaction in a stifle with cranial cruciate ligament rupture
- Fig. 4 Meniscal resection forceps and remnants of a ruptured cranial cruciate ligament
- Fig. 5 A free floating shoulder OCD cartilage fragment in the caudomedial joint space
- Fig. 6 Grasping a shoulder OCD cartilage fragment with curved mosquito hemostatic forceps

Endoscopic photographs by Dr. Timothy C. McCarthy

Arthroscopes

Telescope 1.9 mm, sheath diameter 2.5 mm, working length 4 cm

With a small diameter and short length, this telescope is ideal for the elbow in toy breeds and cats.



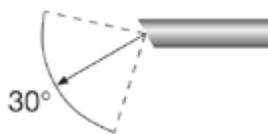
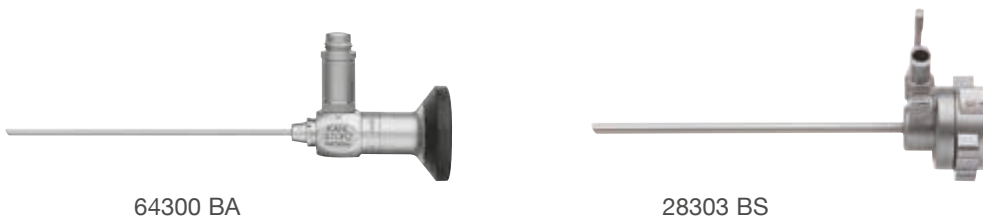
- 28305 BA **HOPKINS® Forward-Oblique Telescope 30°**, diameter 1.9 mm, length 6.5 cm, **autoclavable**, fiber optic light transmission incorporated, color code: red
- 64306 S **High-Flow Arthroscope Sheath**, with snap-in coupling mechanism, diameter 2.5 mm, working length 4 cm, one stopcock, fixed

For use with Arthroscope Sheath 64306 S

- 64306 BT **Obturator**, blunt
- 64306 BS **Obturator**, sharp

Telescope 2.4 mm, sheath diameter 3.2 mm and 3.5 mm, working length 6.5 cm and 8.5 cm

Extremely versatile, this telescope can be used in many different joints, in a variety of patient sizes.



- 64300 BA **HOPKINS® Wide Angle Forward-Oblique Telescope 30°**, diameter 2.4 mm, length 10 cm, **autoclavable**, fiber optic light transmission incorporated, color code: red
- 28303 BS **High-Flow Arthroscope Sheath**, with snap-in coupling mechanism, diameter 3.2 mm, working length 8.5 cm, one stopcock, fixed
- 28303 DS **High-Flow Arthroscope Sheath**, with snap-in coupling mechanism, diameter 3.5 mm, working length 6.5 cm, two stopcocks, rotating

For use with Arthroscope Sheaths 28303 BS and 28303 DS

- 28302 BV **Obturator**, blunt

Telescope 2.7 mm, sheath diameter 4 mm, working length 7.5 cm

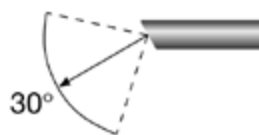
With the same outer diameter as the popular Multi-Purpose Rigid telescope, this scope is shorter and more convenient for arthroscopy.



67208 BA



64133 S



67208 BA

HOPKINS® Forward-Oblique Telescope 30°, diameter 2.7 mm, length 11 cm, **autoclavable**, fiber optic light transmission incorporated, color code: red

64133 S

Arthroscope Sheath, with snap-in coupling mechanism, diameter 4 mm, working length 7.5 cm, one stopcock, rotating, for use with HOPKINS® telescope 30° and Obturator 64133 BC/BT

For use with Arthroscope Sheath 64133 S:

64133 BC **Obturator**, blunt

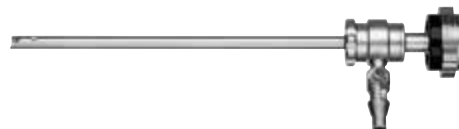
64133 BT **Obturator**, sharp

Telescope 4 mm, sheath diameter 5.5 mm, working length 6.5 cm

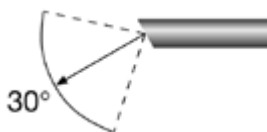
Ideal for endoscopy of the knee in most dogs, this telescope offers the largest image in a convenient, short length.



64728 BWA



64126 KR



64728 BWA

HOPKINS® Wide Angle Forward-Oblique Telescope 30°, enlarged view, diameter 4 mm, length 12 cm, **autoclavable**, fiber optic light transmission incorporated, color code: red

64126 KR

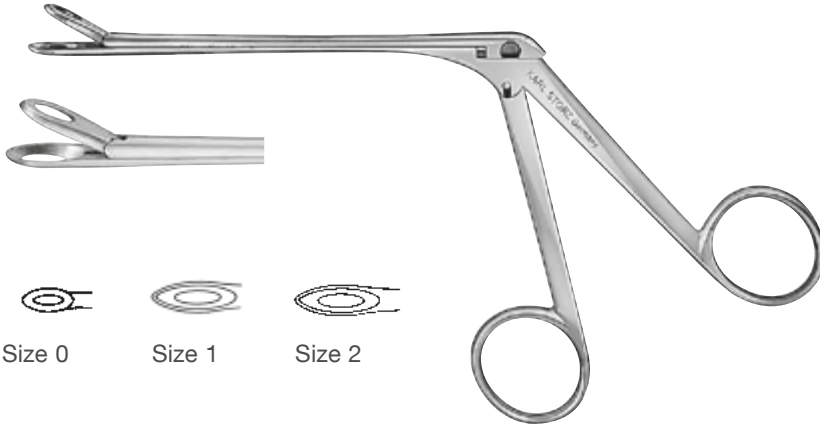
Arthroscope Sheath, with snap-in coupling mechanism, diameter 5.5 mm, working length 6.5 cm, with one stopcock, rotating, for use with HOPKINS® Telescope 30° 64728 BWA and Obturator 64129 BT, color code: blue

For use with Arthroscope Sheath 64126 KR:

64129 BT **Obturator**, semisharp

Basic Instrument Set

Forceps



69100 **BLAKESLEY Forceps**, straight, working length 11 cm, size 0 (3 mm)
 69101 **Same**, size 1 (3.5 mm)
 69102 **Same**, size 2 (4.0 mm)



634824 **STRÜMPEL Forceps**, with oval, fenestrated, cupped jaws, straight, width 2.5 mm, working length 12.5 cm



28171 AGN **SILGRASP® Alligator Grasping Forceps**, surgical, straight jaws, sheath diameter 3 mm, straight, handle with cleaning connector, working length 12 cm



64302 U **Grasping Forceps**, 2 mm, working length 10 cm

Hook and Retractor



64145 S **Hook and Retractor**, graduated, diameter 3.5 mm, length of hook 2 mm



64302 S **Palpation Hook**, graduated, diameter 1.5 mm, working length 7.5 cm, length of hook 1 mm

Osteotome



64104 **Osteotome**, straight, 4 mm

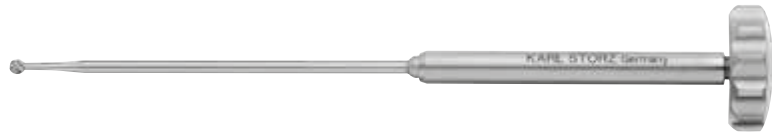
Curettes



64611 **Curette**, size 0, length 21 cm

64640 **Same**, size 0000

Hand Burrs



64527 S **Hand Burr**, with sleeve, diameter 2.7 mm, length 12 cm



64535 S **Same**, diameter 3.5 mm

Egress Cannula



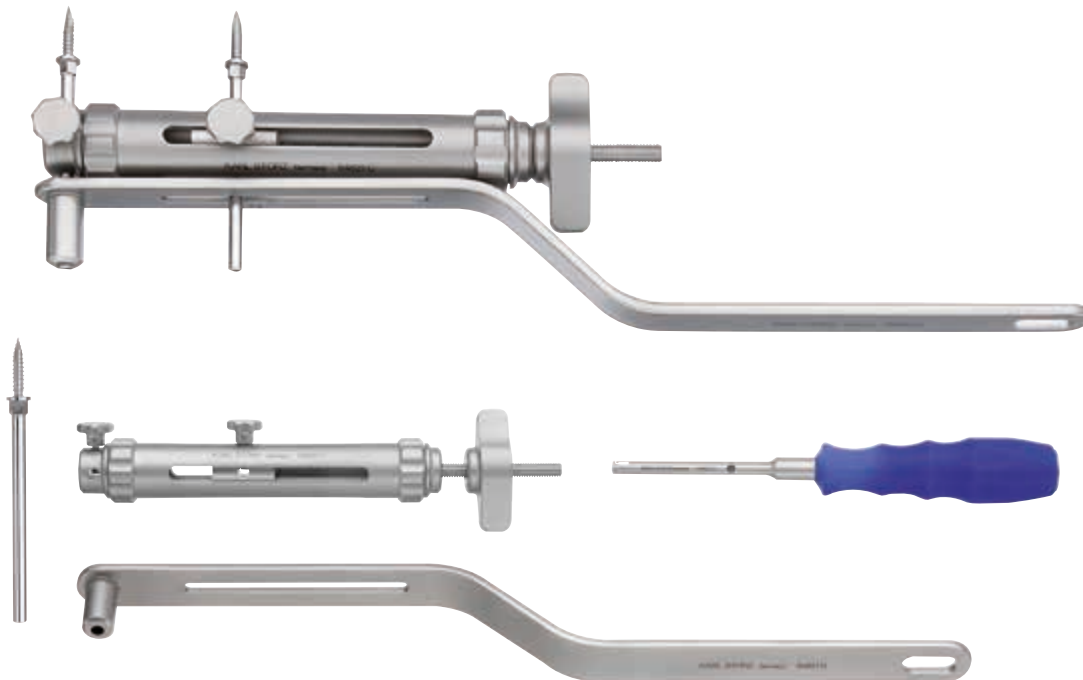
64146 T **Egress Cannula**, LUER-Lock, with stopcock, diameter 3.2 mm, length 7 cm

Obturator

28146 QB **Obturator**, blunt, for use with Egress Cannula 64146 T

LEIPZIG Stifle Distractor

Distraction device for arthroscopic assessment of the medial meniscus in dog



64820 LSD LEIPZIG **Stifle Distractor**,
including:
Distractor
Fixation Screw, package of 6
Lever Arm
Screwdriver

64821 S **Fixation Screw**, package of 6

VITOM® 25



Make use of your endoscopy tower for open surgery too! The VITOM® provides a bright, magnified view of any open surgery. Particularly useful for teaching, recording, or performing any difficult access surgical intervention.



20916020 **VITOM® 25 HOPKINS® Straight Forward Telescope 0°**, working distance 25-75 cm, diameter 10 mm, length 11 cm, **autoclavable**, fiber optic light transmission incorporated, color code: green



28272 RGC **Holding System, autoclavable**, with quick release coupling KSLOCK including:
Rotation Socket, to clamp to the OR table, for European and US standard rails
Articulated Stand, reinforced version, L-shaped, with quick release coupling KSLOCK (female)
Clamping Jaw, clamping range 16.5 up to 23 mm

Optional Accessory:

28272 MR **Mobile OR Rail**, for installation on tables in veterinary and laboratory settings or experimental surgery including:
Retaining Plate
2x **C-Clamp**
2x **Stop Block**

Shaver System

UNIDRIVE® S III ARTHRO SCB

Multi-function motor system allows for quicker procedure time, reducing patient time under anesthesia



28723001-1 UNIDRIVE® S III ARTHRO SCB, with color display, touch screen operation, two motor outputs, with integrated SCB module, 100-120/230-240 VAC, 50/60 Hz including:
SCB Connecting Cable, length 100 cm
Mains Cord

Handpiece



28200 DX **DRILLCUT-X® ARTHRO Shaver Handpiece**,
up to 8000 rpm, for use with UNIDRIVE® S III ARTHRO SCB,
as of software status 1.10.

The shaver handpieces should NOT be treated with universal spray!

Optional Accessory

20012832 **Three-Pedal Footswitch**, slim design,
for use with POWERSHAVER SL

Reusable and single use shaver blades are available in a variety of styles and sizes,
see catalog *Veterinary Endoscopy: Large Animals*

ENDOMAT® SELECT VET

The most versatile and economical fluid pump for veterinary endoscopy from KARL STORZ.



ENDOMAT® SELECT VET is the ideal choice for safe and precise arthroscopic fluid irrigation in small and large animals. Irrigation and flow rate is set by the user using the intuitive, color touch screen.

ENDOMAT® SELECT VET is a cross-discipline roller pump device suitable for fluid irrigation and suction during a variety of surgical and diagnostic procedures in large and small animals such as laparoscopy, thoracoscopy and gastrointestinal endoscopy, as well as arthroscopy.

During any given procedure irrigation or suction can be selected, but only one function can be used during a single procedure. If suction is needed, such as with an arthroscopic shaver, a supplementary suction unit will be required.

ENDOMAT® SELECT VET comes programmed with two primary menus, VET SURG and VET ART. VET ART is further subdivided into two programs with the following pre-programmed settings:

ART SA

- Irrigation pressure: 20-150 mmHg; increments: 10 mmHg
- Boost function: 10% - 20% - 30% - 40%
- Irrigation flow rate: 1,500 - 2,000 - 2,500 ml/min

ART LA

- Irrigation pressure: 20-400 mmHg; increments: 10 mmHg
- Boost function: 10% - 20% - 30% - 40%
- Irrigation flow rate: 1,500 - 2,000 - 2,500 ml/min

Ordering Information:

When ordering an ENDOMAT® SELECT for veterinary use, the UP 210 basic device and the UP 609 software module must both be specified, otherwise the device is not functional.



UP 210 **ENDOMAT® SELECT**, suction or irrigation pump,
incl. mains cord, power supply 100-240 VAC, 50/60 Hz

UP 609 **VET Software for ENDOMAT® SELECT**

Tubing Set for use with ENDOMAT® SELECT VET – ART SA and ART LA:



Single Use

031523-10* **Tubing Set**, irrigation, PC, sterile, for single use, package of 10

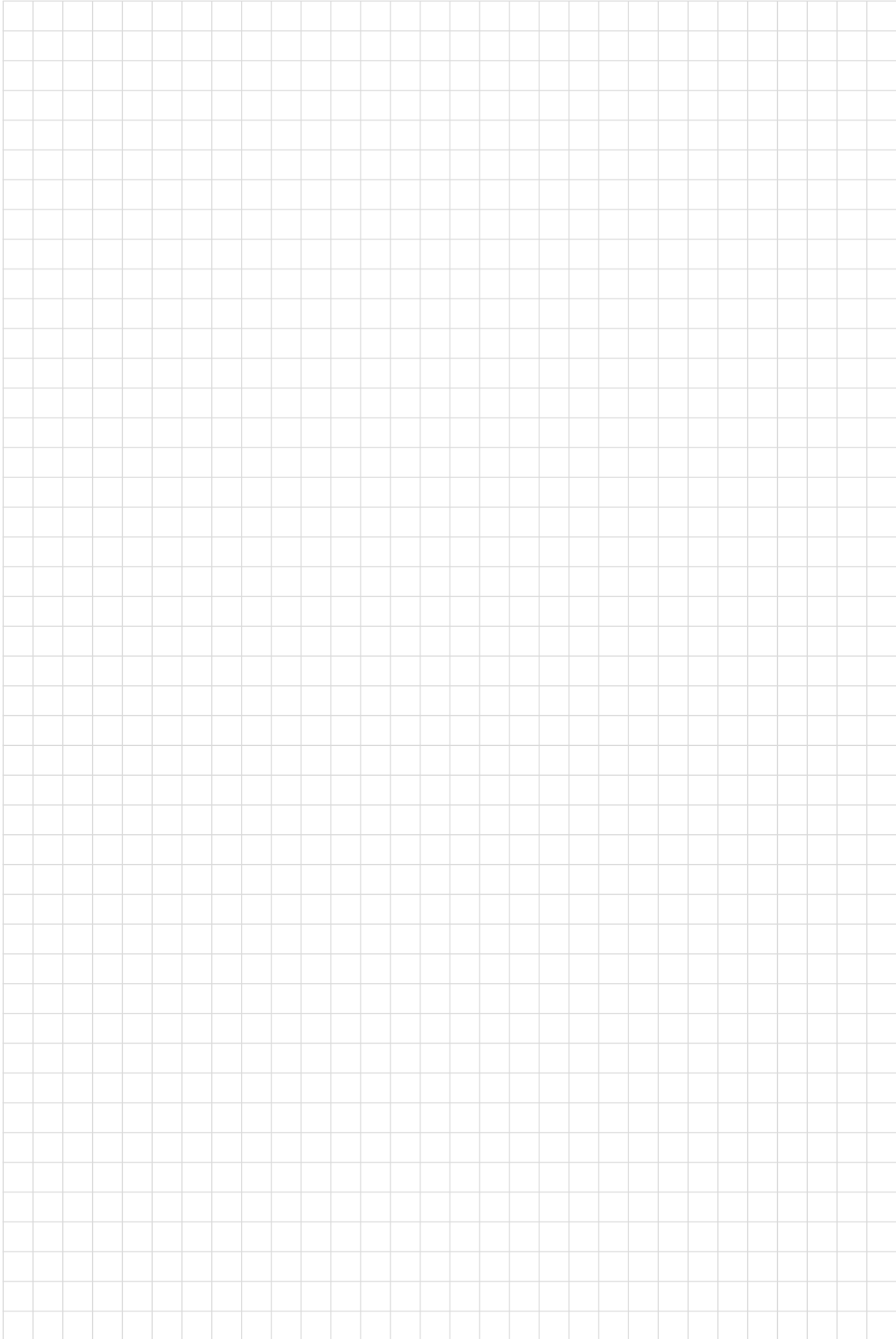
Reusable

UP 008 **Tubing Set**, irrigation, PC, reusable, sterilizable

For further information regarding the VET SURG programs and tubing sets,
see MFL UNITS 2, 96321002



Notes





STORZ
KARL STORZ—ENDOSKOPE

THE DIAMOND STANDARD



KARL STORZ SE & Co. KG
Dr.-Karl-Storz-Straße 34, 78532 Tuttlingen/Germany
Postbox 230, 78503 Tuttlingen/Germany
Phone: +49 (0)7461 708-0
Fax: +49 (0)7461 708-105
E-Mail: vet@karlstorz.com
www.karlstorz.com