

Equine Arthroscopy



Arthroscopic Surgery Set for the Equine Practitioner

Arthroscopy in the horse – as in humans – has revolutionized joint surgery. Since the 1980's, arthroscopy has been accepted as the standard way of performing joint surgery in the horse. Over the past two decades, the number of indications and surgical procedures developed has steadily grown. Working with top equine surgeons around the world, KARL STORZ has developed a complete range of arthroscopes and instruments for these techniques.

This brochure features a basic set for equine arthroscopy. For a complete listing of products in this range, please refer to our catalogue: Veterinary Endoscopy – Large Animals.

List of Indications for Arthroscopic Surgery

Distal interphalangeal (coffin) joint

- Extensor process fragments of distal phalanx
- Subchondral cystic lesions opening into coffin joint
- Small fracture fragments distal second phalanx

Proximal interphalangeal (pastern) joint

- Fragments of proximal dorsal aspect of second phalanx

Metacarpal phalangeal and metatarsal phalangeal (fetlock) joints

- Proximal dorsal first phalanx chip fragments
- Osteochondritis dissecans of distal dorsal metacarpus
- Chronic proliferative (villonodular) synovitis removal

- Diagnostic evaluation of traumatic synovitis and osteoarthritis
- Lag screw fixation of distal metacarpal or metatarsal condylar fractures
- Evaluation of proximal aspect of sagittal P1 fractures treated with lag screw fixation
- Palmar/plantar P1 chip fragments
- Apical sesamoid bone fragments
- Abaxial sesamoid bone fragments
- Basilar sesamoid bone fragments
- Subchondral cystic lesions of distal metacarpus or metatarsus

Carpal joints

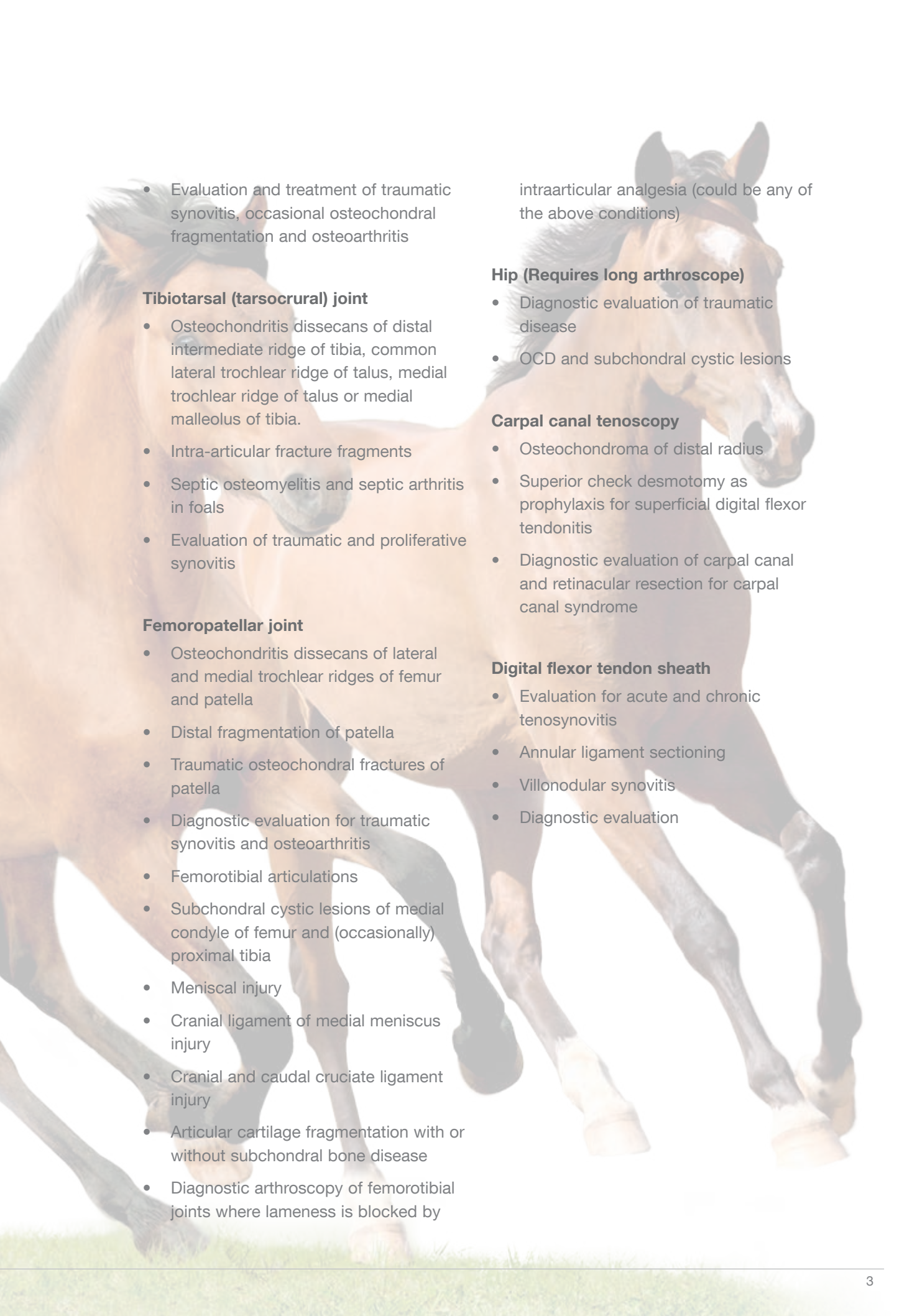
- Chip fragments of carpal bones
- Monitoring and treatment of slab fractures of carpal bones with internal fixation
- Degenerative subchondral bone disease
- Diagnosis and treatment of tearing of intracarpal ligaments
- Subchondral cystic lesions of carpal bones
- Osteochondritis dissecans of carpal bones

Elbow joint

- Diagnostic evaluation of elbow articulation (traumatic arthritis and OA)
- Osteochondritis dissecans of distal humerus (infrequent)

Shoulder joint

- Osteochondritis dissecans of humeral head and glenoid

- 
- Evaluation and treatment of traumatic synovitis, occasional osteochondral fragmentation and osteoarthritis

Tibiotarsal (tarsocrural) joint

- Osteochondritis dissecans of distal intermediate ridge of tibia, common lateral trochlear ridge of talus, medial trochlear ridge of talus or medial malleolus of tibia.
- Intra-articular fracture fragments
- Septic osteomyelitis and septic arthritis in foals
- Evaluation of traumatic and proliferative synovitis

Femoropatellar joint

- Osteochondritis dissecans of lateral and medial trochlear ridges of femur and patella
- Distal fragmentation of patella
- Traumatic osteochondral fractures of patella
- Diagnostic evaluation for traumatic synovitis and osteoarthritis
- Femorotibial articulations
- Subchondral cystic lesions of medial condyle of femur and (occasionally) proximal tibia
- Meniscal injury
- Cranial ligament of medial meniscus injury
- Cranial and caudal cruciate ligament injury
- Articular cartilage fragmentation with or without subchondral bone disease
- Diagnostic arthroscopy of femorotibial joints where lameness is blocked by

intraarticular analgesia (could be any of the above conditions)

Hip (Requires long arthroscope)

- Diagnostic evaluation of traumatic disease
- OCD and subchondral cystic lesions

Carpal canal tenoscopy

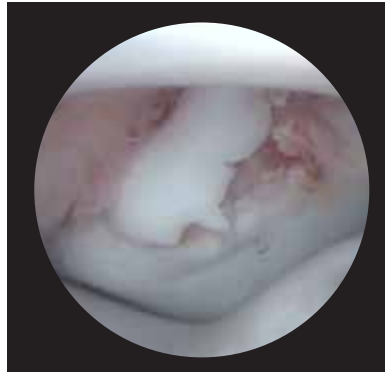
- Osteochondroma of distal radius
- Superior check desmotomy as prophylaxis for superficial digital flexor tendonitis
- Diagnostic evaluation of carpal canal and retinacular resection for carpal canal syndrome

Digital flexor tendon sheath

- Evaluation for acute and chronic tenosynovitis
- Annular ligament sectioning
- Villonodular synovitis
- Diagnostic evaluation



Elevation of proximal dorsal P1 chip



OCD in fetlock of weanling



OCD intermediate ridge of tibia at elevation



Proximal dorsal P1 chip



Removal of distal radial carpal bone chip fragment



Removal of OCD fragment – intermediate ridge of tibia



Small distal radial carpal bone chip



Removal of proximal dorsal P1 chip



Small OCD lesion in femoropatellar joint

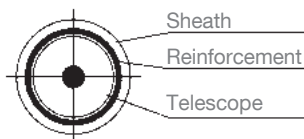
Endoscopic photographs courtesy of Dr. C. Wayne McIlwraith, Professor of Surgery Colorado State University, USA

Standard Arthroscope, size 5.5 mm



64230 BWA **HOPKINS® Wide Angle Forward-Oblique Telescope 30°**, enlarged view, diameter 4 mm, length 18 cm, **autoclavable**, fiber optic light transmission incorporated, color code: red

Snap-In Arthroscope Sheaths with rotating stopcocks



*Increased inflow and outflow rate
without disturbing turbulence*

Special features:

- Coupling between the telescope and sheath is possible in absolutely any position; surgeries requiring a changeover between the arthroscope and instrument ports are thus considerably simplified
- Telescope rotation is made easier
- High-flow system ensures improved inflow and outflow



64131 R **High Flow Arthroscope Sheath**, diameter 5.5 mm, working length 13.5 cm, with snap-in coupling mechanism, with one stopcock, rotating, for use with HOPKINS® Telescope 0°, 30°, 45°, 70°, 90° and Obturators 64130 BC/BT, color code: blue

64131 CR **Same**, with 2 stopcocks

Obturators for use with sheaths 64131R/CR

64130 BC **Obturator**, blunt, color code: green-red-yellow

64130 BT **Same**, semisharp

Basic Instruments for Equine Arthroscopy

Egress Cannulas



64146 T **Egress Cannula**, LUER-Lock, with stopcock, diameter 3.2 mm, length 7 cm



28146 QB **Obturator**, blunt, for use with Egress Cannula 64146 T



64146 Z **Egress Cannula**, diameter 5 mm, length 15 cm

Hook Probes and Retractors



64145 S **Hook and Retractor**, graduated, diameter 3.5 mm, length of hook 2 mm, working length 8 cm



64146 D **Hook and Retractor**, diameter 2.5 mm, length of hook 3.5 mm, working length 11.5 cm



Curettes



64601 **Curette**, size 1, length 21 cm



64611 **Same**, size 0



64620 **Same**, size 00



Osteotome and Elevator



64906 **Elevator**, sharp, curved, width 6 mm



64104 **Osteotome**, flat, cuts both sides, width 4 mm, length 19 cm

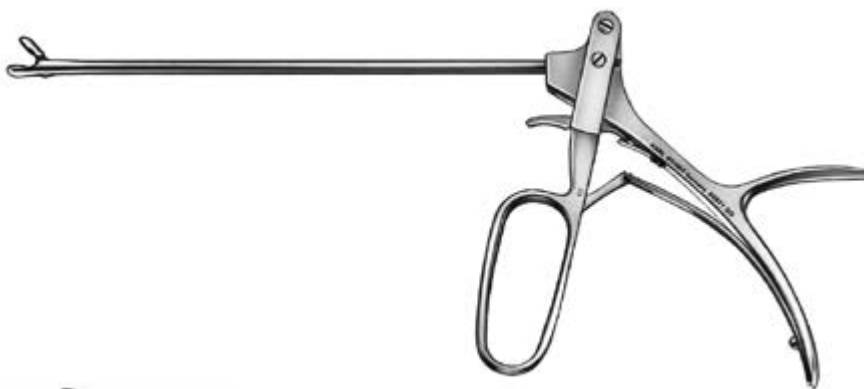
Equine Arthroscopy Rongeurs

Specially designed rongeurs with strong jaws and robust handles are ideal for use in the larger joints of the horse



64149 RL **Ferris-Smith Rongeur**, long, jaws 5 x 8 mm, working length 14 cm

64148 RK **Same**, short, working length 10 cm



64971 BG **Rongeur**, with ratchet, for equine arthroscopy, with robust handle and strong jaws, fenestrated, straight, cup 5 x 11 mm, working length 16 cm



64971 GK **Grasping Forceps**, with ratchet, for equine arthroscopy, with robust handle and strong jaws, straight, with 2 teeth, jaws 5 x 11 mm, working length 16 cm

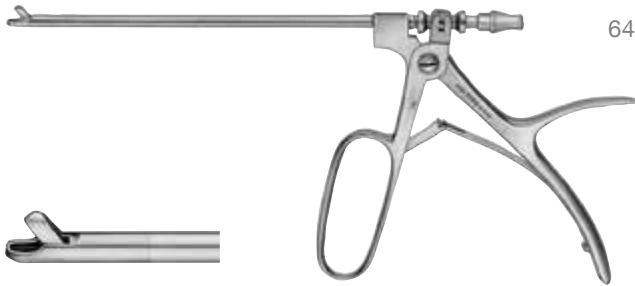
Grasping Forceps

Recommended for removal of smaller cartilage fragments



64146 UD **Grasping Forceps**, with ratchet, working length 13 cm

Suction Punch



64165 SN **Suction Punch**, size 4.8 mm, working length 13 cm

Scissors



64168 B **ARTHROFORCE® III TAKE-APART® Scissors**, hook-shaped, straight, sheath diameter 3.5 mm, working length 13 cm

Microfracture Chisels

for perforation of subchondral bone, which may stimulate cartilage regrowth



64728 CC **Microfracture Chisel**, straight, working length 12 cm

64728 CD **Same**, angled 30°

64728 CE **Same**, angled 70°

Shaver System

UNIDRIVE® S III ARTHRO SCB

Multi-function motor system allows for quicker procedure time, reducing patient time under anesthesia



28723001-1 **UNIDRIVE® S III ARTHRO SCB**, with color display, touch screen operation, two motor outputs, with integrated SCB module, 100-120/230-240 VAC, 50/60 Hz including:
SCB Connecting Cable, length 100 cm
Mains Cord

Handpiece



28200 DX **DRILLCUT-X® ARTHRO Shaver Handpiece**, up to 8000 rpm, for use with UNIDRIVE® S III ARTHRO SCB, as of software status 1.10.

The shaver handpieces should NOT be treated with universal spray!

Optional Accessory

20012832 **Three-Pedal Footswitch**, slim design, for use with POWERSHAVER SL

Reusable and single use shaver blades are available in a variety of styles and sizes, see catalog *Veterinary Endoscopy: Large Animals*

Joint Distention

Fluid Pump

For fluid joint distention, irrigation and suction



- 69 3310 09-1 **ENDOMAT® SCB Set, for arthroscopy,**
with KARL STORZ-SCB, incl. mains cord,
power supply 100 – 240 VAC, 50/60 Hz
including:
Tubing Set, with two puncture cannulas, sterile,
for single use, package of 3

Accessories:

- 26 3300 41 **Tubing Set,** reusable, sterilizable
- 031118-10 **Tubing Set,** for irrigation, for single use, sterile,
package of 10
- 20 0141 30 **One-Pedal Footswitch,** digital, one-stage

Insufflator

For gas distention which improves visibility



- 62 4325 01 **CO₂ ENDO-ARTHROFLATOR VET,**
power supply 100 – 240 VAC, 50/60 Hz
including:
Silicone Tubing Set, sterilizable
Universal Wrench
Gas Filter, sterile, package of 10

The pressure hose and CO₂ bottles must be ordered separately,
see catalog *Veterinary Endoscopy: Large Animals*

Pressure Cuff

For fluid joint distention when a fluid pump is not available



26 3101 38 Pressure Infusion Cuff, 3 l

Accessories:

- 20 3100 92 Manometer**, for use with Pressure Cuffs **26 3100 38** and **26 3101 38**
- 20 3100 90 Rubber Foot Pump**, with silicone tubing, length 200 cm, with pressure relief valve, fits Pressure Cuffs **26 3100 38** and **26 3101 38**
- 20 3100 41 Silicone Tubing Set**, for irrigation, sterilizable, length 250 cm, for use with Pressure Cuffs **26 3100 38** and **26 3101 38** with Foot Pump **20 3100 90**



THE DIAMOND STANDARD

KARL STORZ SE & Co. KG
Dr.-Karl-Storz-Straße 34, 78532 Tuttlingen/Germany
Postbox 230, 78503 Tuttlingen/Germany
Phone: +49 (0)7461 708-0
Fax: +49 (0)7461 708-105
E-Mail: vet@karlstorz.com
www.karlstorz.com