

Endoscopy in Small Exotic Animals

Set for birds, reptiles, amphibians,
small mammals and fishes



Endoscopy – an Essential Tool for the Exotic Animal Veterinarian

Structures Visualized:

Heart
Lungs
Air sac
Proventriculus
Ventriculus
Intestines
Pancreas
Spleen
Adrenal glands
Kidneys
Ureter
Reproductive tract
Esophagus
Crop
Cloaca
Trachea
Syrinx
Fat bodies
Swim bladder
Gills
Teeth
Larynx
Liver

Endoscopic Procedures:

Coelioscopy
Biopsy
Gender identification
Sampling of debris
Foreign body retrieval
Cloacoscopy
Cystoscopy
Rhinoscopy
Otoscopy
Vaginoscopy
Intubation
Thoracoscopy
Arthroscopy
Minimally invasive surgery
LASER and Electro surgery
Fine needle injection or aspiration
Saline-infused gastro-intestinal endoscopy
Therapeutic curettage and lavage of lesions
Salpingectomy, ovariectomy, orchidectomy
Oral cavity examination and dental procedures



The small and delicate nature of many exotic animals makes them ideally suited for endoscopy. In fact, the benefits of magnification, illumination and minimal invasion have led to the widespread acceptance of endoscopy as a routine diagnostic technique in birds, reptiles, amphibians, small exotic mammals and fish.

Comments from veterinarians

“This makes me more confident as a practitioner.”

“I am finally getting answers that I would have otherwise missed.”

“We all know that a definitive diagnosis requires a biopsy!”

“I get more referrals and better income!”

“How can I afford NOT to have endoscopy?”

Fig. 1:
Turtle, immature ovary



Fig. 2:
Iguana, testes and vas deferens

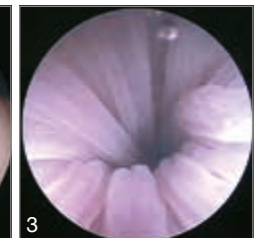
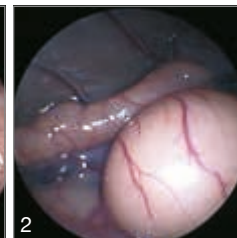


Fig. 3:
Iguana, esophagus with fluid infusion

Fig. 4:
Ferret, cranial abdomen

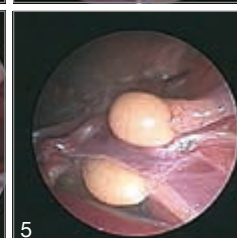
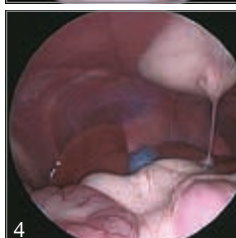


Fig. 5:
Plum-headed parakeet, testes

Fig. 6:
White cockatoo, cloacal lymphoma

Fig. 7:
Amazon parrot, cranio-thoracic air sac

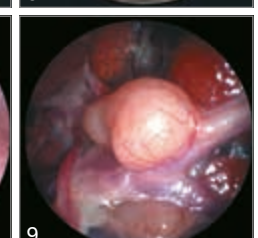
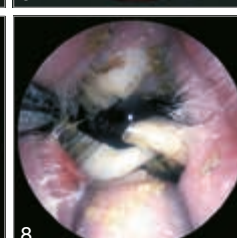
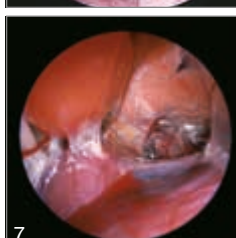


Fig. 8:
Guinea pig, molar malocclusion

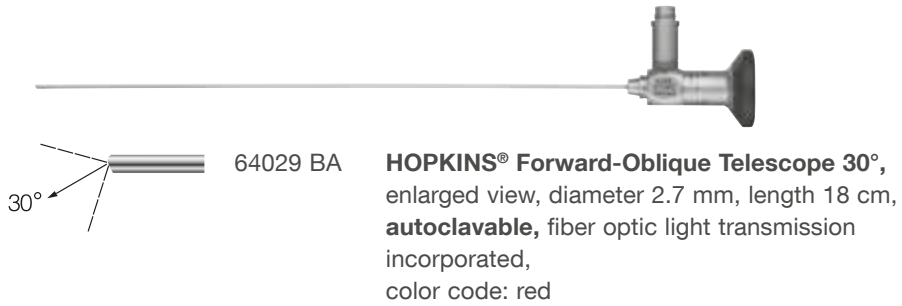
Fig. 9:
Amazon parrot, testes

Endoscopic images courtesy of
Dr. Stephen Divers, University of Georgia (1, 2, 3);
Dr. Michael Murray, Monterey Bay Aquarium (4, 5, 6); and
Dr. Michael Taylor, University of Guelph (7, 8, 9).

NEW

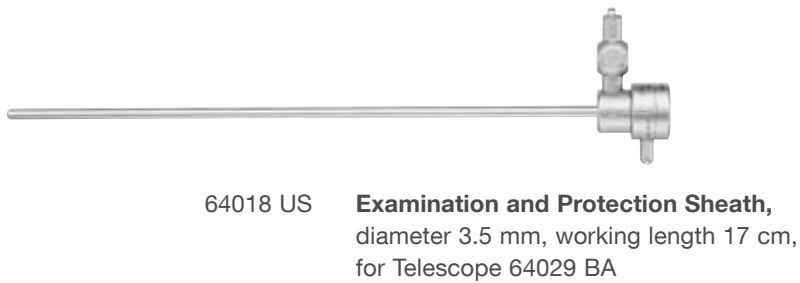
Multi-Purpose Rigid Telescope, 2.7 mm, for universal use

Newly designed optics generate a larger image, making details easier to see than ever before.



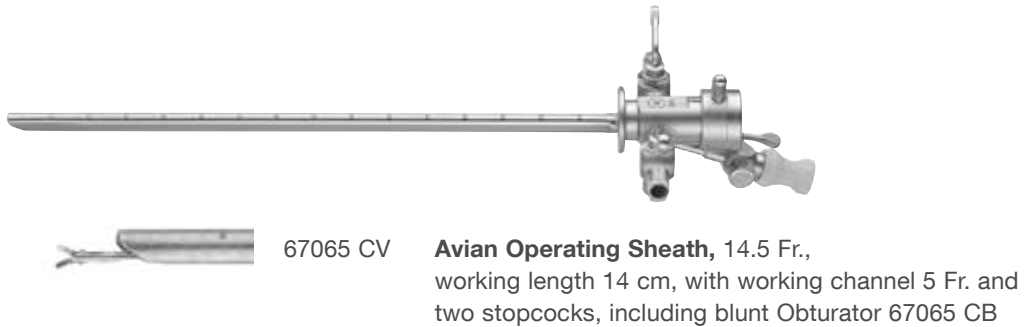
Examination and Protection Sheath

- Protects the telescope during examination



Avian Operating Sheath

- Enables the use of flexible instruments size 5 Fr. .



Trocar 3.9 mm, for use with Telescope 64029 BA and Protection Sheath 64018 US

- For laparoscopy, multipuncture approach



Instruments for use with Avian Operating Sheath 67065 CV



67161 Z

Biopsy Forceps, flexible, oval, double action jaws, 5 Fr., length 34 cm

The most versatile biopsy forceps: For the collection of deep, longitudinal samples. Also useful for sampling exudate and debris.



67161 T

Grasping Forceps, flexible, double action jaws, 5 Fr., length 34 cm

Large serrations make these forceps particularly useful for grasping medium to large objects and removing exudate and debris.



62501 EK

Scissors, flexible, single action jaws, 4 Fr., length 34 cm

The scissors are an essential part of the operating system. Air sac, peritoneal and pleural membrane can be easily incised.



67071 X

Flexible Needle, with outer tube, total outer diameter 1.5 mm, tube length 31 cm, needle outer diameter 0.7 mm

Used for injection, aspiration and irrigation.



67159 L

Polypectomy Snare, 5 Fr., length 32 cm, including:

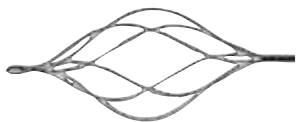
Handle

Tube

Snare

Adaptor

Used for ovariectomy and orchidectomy in birds and reptiles



67023 VK

Stone Basket, flexible, 5 Fr., length 60 cm, including:

3-Ring Handle

Basket

Coil

The ideal solution for the retrieval of smooth or rounded objects



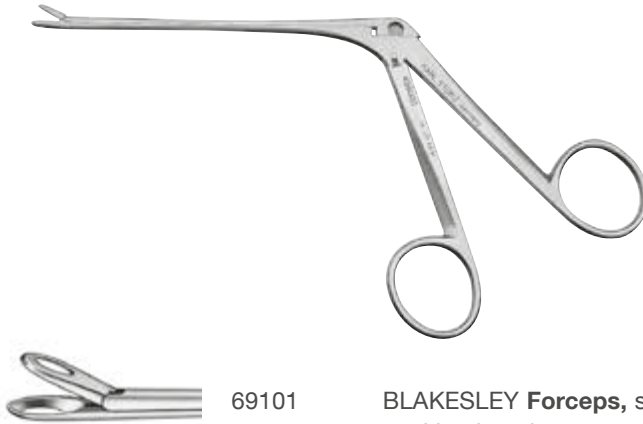
67772 A

Needle Electrode, unipolar, 5 Fr., length 53 cm.

The needle can be energized using a radiosurgical unit for incision and coagulation of structures.

BLAKESLEY Forceps

- For trimming teeth of rabbits and rodents



69101

BLAKESLEY Forceps, straight, size 1 (3.5 mm),
working length 11 cm

Mini Multi-Purpose Rigid Telescope

- Operating telescope for celioscopy, cystoscopy, rhinoscopy and cloacoscopy in smaller exotic animals



67030 BA

Operating Telescope 30°, 9.5 Fr., working length
14 cm, **autoclavable**, fiber optic light transmission
incorporated, with working channel 3 Fr. and 2 LUER-
Lock cones,
color code: red

Instruments for use with Operating Telescope 67030 BA



61071 ZJ **Biopsy Forceps**, double action jaws, flexible, 3 Fr., length 28 cm



61071 TJ **Grasping Forceps**, for removing foreign bodies, double-action jaws, flexible, 3 Fr., length 28 cm

These delicate forceps are useful for blunt dissection or for grasping smaller objects.

Miniature Telescope

- For tracheoscopy, cystoscopy and rhinoscopy in smaller patients



62512 **Miniature Straight Forward Telescope 0°**, semi-rigid, diameter 1 mm, length 20 cm, fiber optic light transmission incorporated, color code: green

Insufflation



- 624325 01 **CO₂ ENDO-ARTHROFLATOR VET**,
power supply 100 – 240 VAC, 50/60 Hz
including:
Silicone Tubing Set, sterilizable
Universal Wrench
Gas Filter, sterile, for single use, package of 10

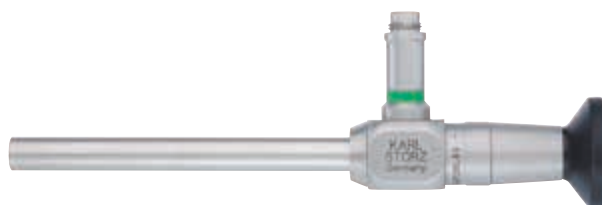


- 62120 J **VERESS Pneumoperitoneum Needle**,
with spring-loaded blunt stylet, LUER-Lock, **autoclavable**,
diameter 2.1 mm, length 10 cm

VITOM® 25



Make use of your endoscopy tower for open surgery too! The VITOM® provides a bright, magnified view of any open surgery. Particularly useful for teaching, recording, or performing any difficult access surgical intervention.



609160 20 **VITOM® 25 HOPKINS® Straight Forward Telescope 0°**, working distance 25-75 cm, diameter 10 mm, length 11 cm, **autoclavable**, fiber optic light transmission incorporated, color code: green



28272 RGC **Holding System, autoclavable**, with quick release coupling KSLOCK including:
Rotation Socket, to clamp to the OR table, for European and US standard rails, with lateral clamp for height and angle adjustment of the articulated stand
Articulated Stand, reinforced version, L-shaped, especially large swivel range, with one mechanical central clamp for all five joint functions, height 48 cm, swivel range 66 cm, with quick release coupling KSLOCK (female)
Clamping Jaw, metal, for use with all square-headed KARL STORZ HOPKINS® telescopes, clamping range 16.5 up to 23 mm, with quick release coupling KSLOCK (male)

Mobile Endoscopic Imaging System

Five devices, one compact unit

This high-performance, all-in-one unit integrates every component necessary for endoscopic imaging: camera, light source, monitor, insufflation pump and image capture.

The TELE PACK VET X LED is compatible with all types of endoscopes, including videoendoscopes, rigid telescopes, fiberscopes and exoscopes.



RP 100 S1 **TELE PACK VET X LED**, endoscopic video unit for use with all KARL STORZ TELECAM one-chip camera heads, veterinary video camera heads and video endoscopes, with integrated insufflation pump, incl. LED light source similar to Xenon technology, with integrated digital Image Processing Module, 15" LCD TFT monitor with LED backlight, USB/SD memory module, color systems PAL/NTSC, power supply 100 – 240 VAC, 50/60 Hz
including:
USB Flash Drive, 32 GB
Mains Cord
Mains Cord, US plug
Case

RP 100 S2 **Same**, without case

For Optional Accessories, see ENDOWORLD® VET 36, TELE PACK VET X LED

Camera Head



20 2120 30
20 2121 30

PAL
NTSC

TELECAM
One-Chip Camera Head

color systems PAL/NTSC, soakable, gas-sterilizable, with integrated Parfocal Zoom Lens, $f = 25\text{-}50\text{ mm}$, (2x), 2 freely programmable camera head buttons

For other camera head options, see ENDOWORLD® VET 36, TELE PACK VET X LED

Fiber Optic Light Cable



69495 NA

Fiber Optic Light Cable, with straight connector, diameter 3.5 mm, length 230 cm

Adaptor



20030030

Adaptor, with insufflation connector



STORZ
KARL STORZ—ENDOSKOPE

THE DIAMOND STANDARD



KARL STORZ SE & Co. KG
Dr.-Karl-Storz-Straße 34, 78532 Tuttlingen/Germany
Postbox 230, 78503 Tuttlingen/Germany
Phone: +49 (0)7461 708-0
Fax: +49 (0)7461 708-105
E-Mail: vet@karlstorz.com
www.karlstorz.com