

ORbiter®

Ceiling pendant system from KARL STORZ

The basis of OR design



ORBiter® ceiling pendant systems from KARL STORZ

The patient is the focal point of surgery. ORBITER® perfectly puts this principle into practice and thereby defines the gold standard for patient care in the OR. Allowing a multitude of medical devices to be easily moved yet reliably positioned in a well-organized manner – those are the key strengths of the KARL STORZ ORBITER® ceiling pendant systems.

With the ORBITER® system, KARL STORZ offers you a series of tailored solutions for anesthesia, surgery, and endoscopy that have been optimized with regard to safety-related, ergonomic, and economic aspects. Through its intelligent use of space and customized device arrangement, ORBITER® facilitates work for the surgical team and thereby supports a smooth workflow in the OR. ORBITER® fits seamlessly into the integrated OR philosophy and the KARL STORZ OR1™ product world.



It is recommended to check the suitability of the product for the intended procedure prior to use.
Please note that the described products in this medium may not be available yet in all countries due to different regulatory requirements.

Benefits – ergonomic and well-designed

Ceiling pendant systems that meet all demands

Whether you need to position a single device or lift and position a heavy anesthesia machine – we offer ceiling-supported solutions for any task. Individual support arms and media columns range from the ORBITER® 90 with a height-adjustable light-duty extension arm to the ORBITER® 600X for heavy-duty applications.

You have the choice between rigid extension arms of various lengths and height-adjustable spring and/or motorized arms for light-duty and heavy-duty systems. The media column can be expanded through mechanical modifications, and in combination with the ORBITER® 600X support arm, it allows lifting the anesthesia machine or an equipment cart to an ergonomic working position.

Installation and service made easy

Spacious openings for data lines, cables, and tubing, access panels for later expansion, and a sophisticated system for adjusting or later changing the rotation stops enable servicing to be easily performed.



Intelligent space utilization

Operating rooms are expensive, and the available space for equipment and staff is limited. Ergonomic handling of all medical devices near the sterile area is therefore all the more important. Up to six height-adjustable shelves can be attached to the ORBITER® media column.

Clarity without cable clutter

Cable harnesses for separately routing the signal supply, video feed, and power supply can be stored in hidden channels along the entire media column. This facilitates access to the device, prevents trip hazards on the floor, and reduces the risk of contamination for the patient and staff.

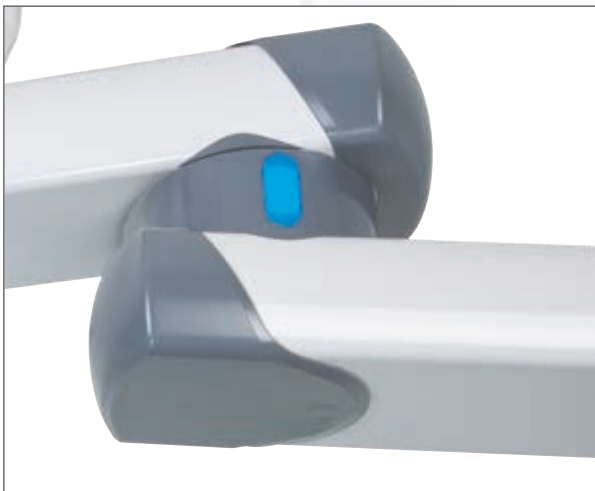
Advantages – unique and efficient

MOVE + STOP electromagnetic passive brakes

The innovative MOVE + STOP electromagnetic brake system holds the media column in its precise position and allows smooth maneuvering of the equipment if necessary. The optical LED display at each STOP reliably rules out damage to the system and operating errors.

The brake system is electrically operated, but power is only required when the brake is active. This means that the system remains in position even in case of power failure. Because MOVE + STOP does not use compressed air, it requires no maintenance.

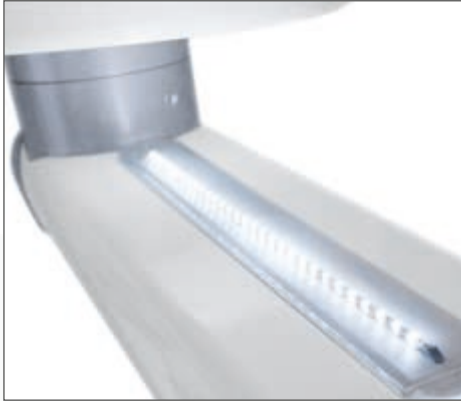
Our MOVE + STOP brake system allows smooth adjustment and secure positioning of the ceiling pendant system.



Options – flexible and expandable

ENVILED makes sense!

In endoscopic procedures, surgeons typically prefer dimmed ambient light. ENVILED meets this demand with indirect and dimmable LED light strips in the support arm or the media column.



Everything is easier with music.

A comfortable work environment can be conducive to achieving better results. The optional docking station for an iPod or other MP3 player as well as loudspeakers integrated in the media column or external spherical speakers create the right listening environment.



Accessories

The media column perfectly meets customer wishes, offering power connections, gas outlets, manometers, and data ports as well as the platforms for medical devices. The ORBITER® product family is completed by numerous accessories, such as IV bottle holders, writing or keyboard shelves, drawers, adjustable holding arms for examination lights, monitors, or touch screens, tubing holders, camera mounts, footswitch holders, storage trays, etc.

Combinations – compatible and consolidated

Parts and the whole

Each ORBITER® ceiling pendant system is a medical device that fits into a comprehensive operating room concept. The components as well as their design come from KARL STORZ.

ORbiter® and LEDVISION®

ORBITER® ceiling mounts can be combined with the KARL STORZ LEDVISION® surgical lights and monitor support arms using tandem mounts. This results in space-saving solutions that are as useful in small procedure rooms as they are in complex hybrid ORs.

ORbiter® and KARL STORZ OR1™ SCB

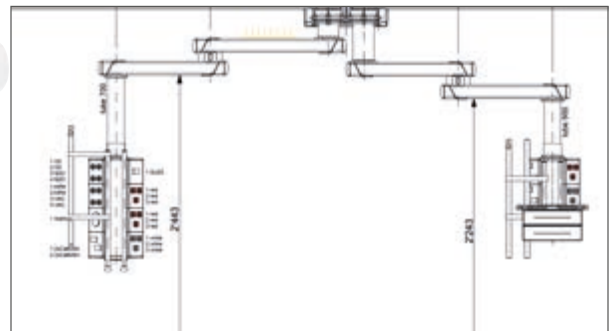
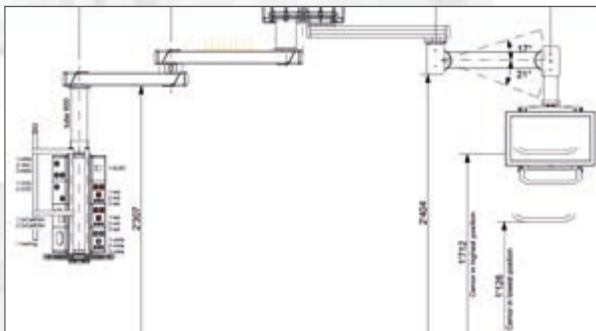
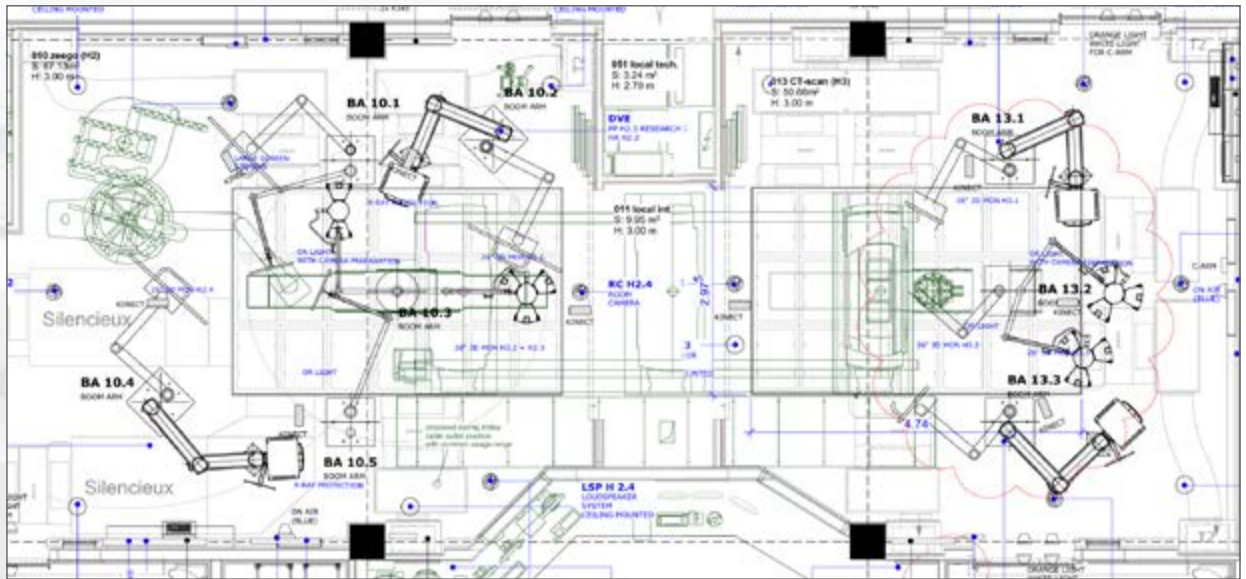
ORBITER® ceiling pendant systems are part of the KARL STORZ OR1™ concept for central device control. Furthermore, they offer a communication platform for audio and video applications.

ORbiter® and KARL STORZ OR1 FUSION®

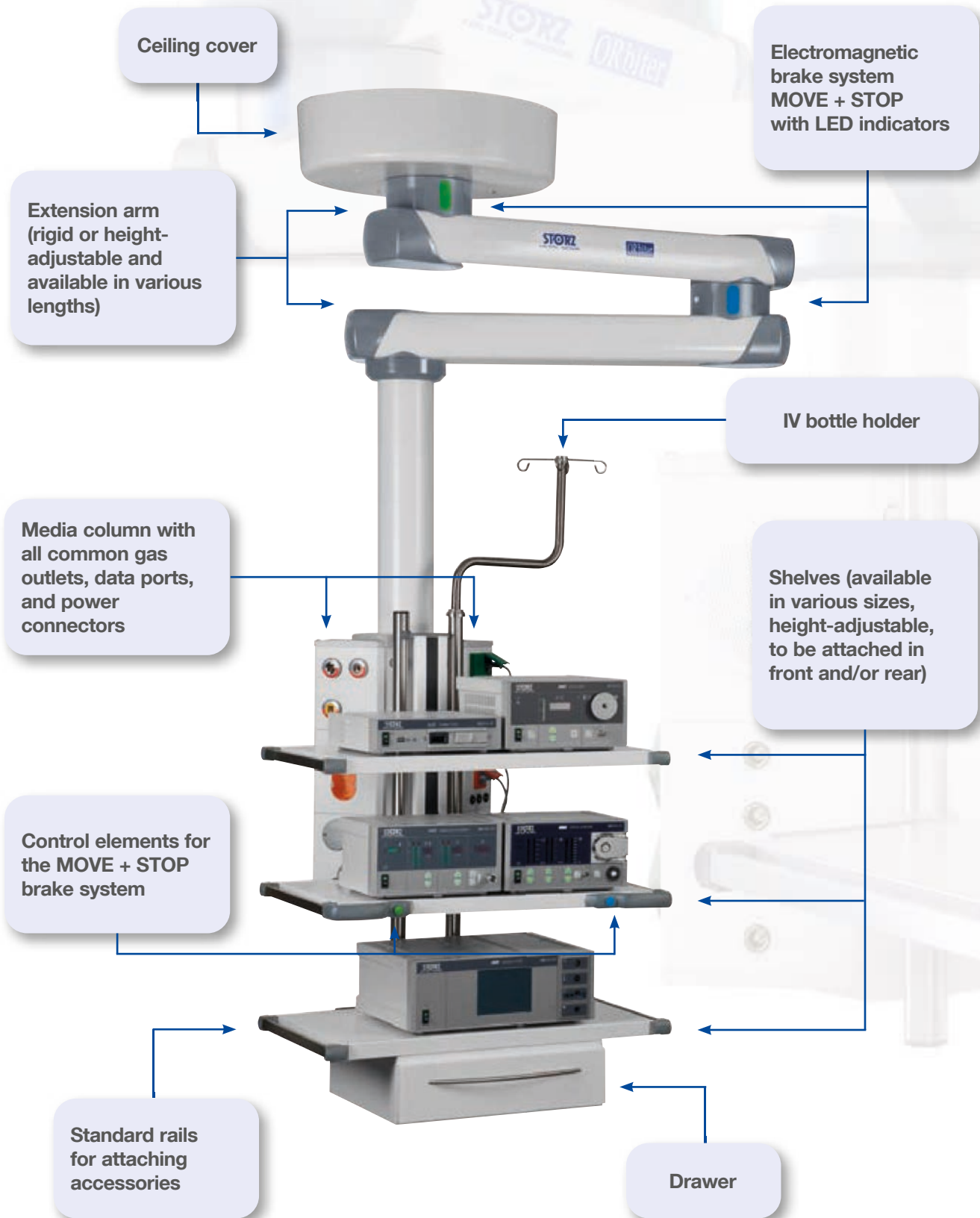
ORBITER® ceiling pendant systems offer special decoder integration options. They are part of the KARL STORZ OR1 FUSION® system.



KARL STORZ designs plans for rooms of all types, ranging from individual procedure rooms to multi-specialty solutions. In this process, we have already developed numerous new products with special fixtures for a series of medical indications, such as KARL STORZ OFFICE1 or the SURGICAL COCKPIT®. Here, the surgical team's workspace is strictly based on the actual surgical workflow. Contact us, and we will be happy to turn your wishes and requirements into reality using a holistic, conceptual approach.



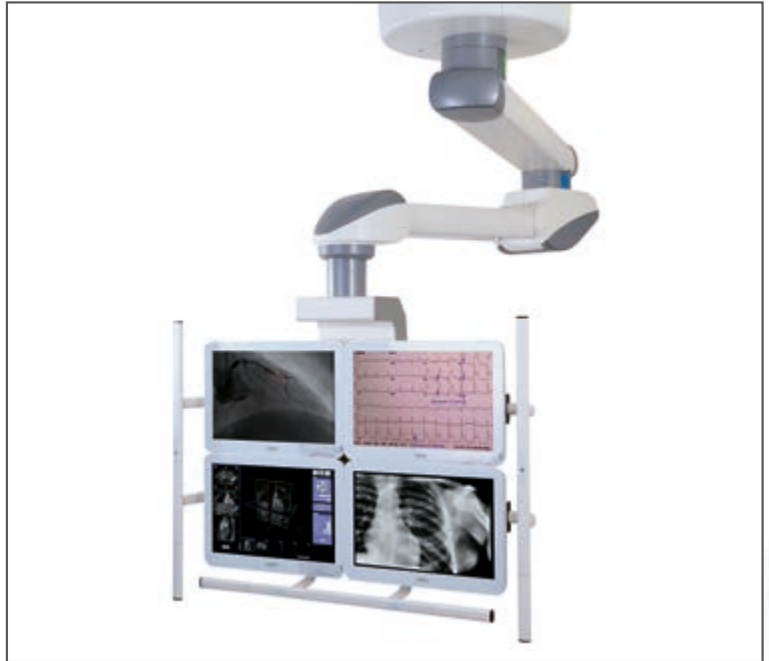
ORbiter® 300. The Universal System for Anesthesia and Endoscopy



ORbiter® 90 and 90S

ORBITER® 90 and 90S are height-adjustable support arm systems whereby ORBITER® 90 can carry loads up to 90 kg by means of a motor drive.

ORBITER® 90S can carry loads up to 110 kg by means of a spring force and is particularly suitable for large-screen monitors with a defined load capacity.



ORBITER® 90S



ORBITER® 200M

ORbiter® 200M

The ORBITER® 200M pendant system allows the swiveling and motorized lifting of loads up to 250 kg.



ORbiter® 600X

The ORBITER® 600X heavy-duty system has the widest possible range of gas outlets, power lines and data cables. It can easily lift and position even the heaviest equipment such as anesthesia machines from various manufacturers.

Technical data

Support Arm System	ORbiter® 90S	ORbiter® 90	ORbiter® 200M	ORbiter® 300	ORbiter® 600X
Extension arm lengths, single arm	1000 mm	---	1000 mm	600 mm/800 mm/ 1000 mm/1200 mm	600 mm/800 mm/ 1000 mm/1200 mm
Height adjustable	yes (spring)	yes (motorized)	yes (motorized)	no	no
Loading capacity	50-80 kg 70-110 kg	90 kg	up to 250 kg	single arm up to 640 kg double arm up to 300 kg	single arm up to 1000 kg double arm up to 540 kg
Extension arm lengths, double arm	1000/600 1000/880 1000/1000 1000/1200	---	1000/600 1000/800 1000/1000 1000/1200 1000/1400	---	600/600 800/600 800/800 1000/600 1000/800 1000/1000 1200/1000 1200/800 1400/1000 1400/1200
Brake system	electromagnetic brake	pneumatic brake plus friction brake	electromagnetic brake	electromagnetic brake	electromagnetic brake
Pivot range	330° horizontal + 20°/- 40° vertical from the horizontal	340° horizontal + 17°/- 21° vertical from the horizontal	330° horizontal +/- 23° vertical from the horizontal	up to 350° horizontal	330° horizontal
Color	RAL9010/7015	RAL9010/7015	RAL9010/7015	RAL9010/7015	RAL9010/7015

Technical data

Media column		Medium-duty system	Heavy-duty system
		ORbiter® 90 ORbiter® 90S ORbiter® 200M ORbiter® 300	ORbiter® 600X
Height of media column	mm	200/400/600/800	800/1000
Pivot range of media column		340°	340°
Bar length of multifunction rack diameter 38 mm	mm	200/500/600/1000/1500	200/500/600/1000/1500
Max. number of device platforms		6	6
Dimensions of device platform	mm	520 x 500 750 x 500	520 x 500 750 x 500
Loading capacity of device platform	kg	80	80
Loading capacity of standard rail	kg	10	10
Loading capacity of drawer	kg	10	10
Loading capacity of IV bottle holder	kg	30	30
Lift system for anesthesia machine or equipment cart		no	yes
Max. lift of lift system	mm	---	500
Cable management for the various housing lengths	mm	300 or 500 or 700	300 or 500 or 700
Conformity		 0297	 0297

More than
75
Years

*Shaping the Future
of Endoscopy with you*