

SILVER SCOPE® Veterinary Videoendoscopes

for use in Small and Large Animals



Unifying State-of-the-Art Technology, Ergonomics and Durability

See more, see better...

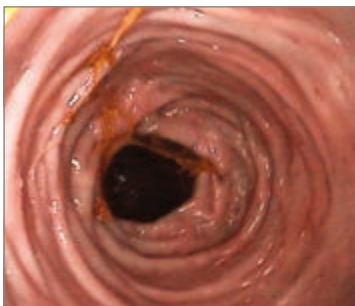
- **Digital processing technology**, high resolution CCD chips and an enhanced optical system produce images with unsurpassed clarity, brightness and depth of field
- **Dual light carriers** combined with an intelligent digital processor produce evenly illuminated images
- **8x magnification** provides large views of anatomy and pathology
- **Recessed air/water nozzles** with directional flow ensure effective distal lens cleaning

Scope every patient that needs it...

- **Extended length** facilitates duodenal examination in the largest dog breeds, gastroscopy in foals and urethroscopy in stallions
- **Reduced diameter** facilitates passage through the duodenum of cats, puppies and small dog breeds

Improve results...

- **Large working channel** accommodates bigger, more diagnostic biopsies and larger foreign body retrieval instruments
- **Deflection up to 210°** facilitates passage of the endoscope tip to otherwise “hard-to-reach” areas





Endoscopic images courtesy of Dr. Todd Tams, Veterinary Centers of America, Los Angeles, USA

Reduce fatigue...

- Newly designed, ergonomic handle ensures an easy, comfortable grip
- Insertion tube, constructed of a new “intelligent” plastic, with a special “silk-touch” surface facilitates precise guidance of the endoscope
- Programmable buttons conveniently located on handpiece allow endoscopist the option of controlling camera functions

Increase your bottom line...

- KARL STORZ veterinary videoendoscopes use the same processor and light source as our fiberscopes and rigid telescopes, which translates into major savings for the busy vet practice with multiple endoscopy services
- SILVER SCOPE®s incorporate the latest design innovations to ensure durability
- The integrated leakage test port “pressure cap system” has been newly developed to prevent the possibility of liquid entering the endoscope
- Newly designed robust housing provides superior protection to the insertion tube
- Our optional, comprehensive ENDOPROTECT1 program will further protect your investment and minimize downtime when repairs are necessary

Extended Length & Sleek Diameters are Ideal for Small and Large Animals

KARL STORZ SILVER SCOPE® veterinary videoendoscopes are ideally suited for numerous veterinary applications in both small and large animals. The large working channel facilitates bigger biopsies to ensure a more accurate diagnosis.

SMALL ANIMALS: Esophagogastroduodenoscopy, Colonoscopy, Tracheobronchoscopy, Rhinoscopy

LARGE ANIMALS: Laryngoscopy, Rhinoscopy, Guttural Pouch Endoscopy, Tracheobronchoscopy, Gastroscopy in foals, Urethroscopy in stallions



Indications for Gastrointestinal Endoscopy

- Dysphagia
- Regurgitation
- Chronic vomiting
- Hematemesis
- Melena
- Chronic diarrhea
- Foreign bodies
- PEG tube placement
- Dyschezia
- Masses
- Obstruction
- Weight loss
- Poor appetite
- Tenesmus

Indications for Respiratory Endoscopy

- Chronic coughing
- Chronic lung disease
- Evaluate tracheal collapse
- Persistent halitosis
- Hemoptysis
- Difficult intubation
- Neoplasia
- Bronchoalveolar Lavage (BAL)
- Culture
- Cytology
- Sneezing
- Nasal discharge
- Epistaxis
- Difficult or noisy breathing
- Gagging or choking
- Rubbing or scratching nose
- Facial or nasal pain
- Facial swelling
- Foreign body inhalation
- Pre-purchase examination

	Sheath	Working Length	Working Channel	Deflection up	Deflection down	Left/right
Multi-Purpose Videoendoscope, Set 60714PKSK/60714NKSK	7.9 mm	140 cm	2.8 mm	180° If the left/right control knob is simultaneously engaged, a maximum deflection of 210° can be achieved	110°	110°

60714PKSK **Veterinary Videoendoscope PV-SG 28-140, Set**, SILVER SCOPE® series, color system PAL, sheath diameter 7.9 mm, working channel diameter 2.8 mm, working length 140 cm, deflection up/down 180°/110°, left/right 110°/110°, field of view 120°, depth of view 2-200 mm, including:

Veterinary Videoendoscope Basic Unit, with case, pressure compensation cap and instruction manual

Leakage Tester

Rubber Leaflet Valve, package of 10

Irrigation Tube, for working channel

Y-Irrigation Tube

Suction Valve, SILVER SCOPE® series

Cleaning Brush

Water Bottle, 250 ml

Air/Water Valve, SILVER SCOPE® series

Cleaning Valve, SILVER SCOPE® series

Protective Film

60714NKSK **Same**, color system NTSC

Videoendoscope adaptor for use with KARL STORZ camera systems:



TC013

IMAGE1 S™ Videoendoscope Adaptor 90°, color systems PAL/NTSC, angled 90°, length 50 cm, for use with IMAGE1 S™ X-LINK TC301 or TELECAM C3 TC100



20213070


Video Connecting Cable, for use between KARL STORZ videoendoscopes and TELECAM Camera Control Units (CCU) or TELE PACK video units

Single-use instruments for use with Multi-Purpose Videoendoscope 60714PKSK/60714NKSK

Biopsy Forceps




110283-10

Biopsy Forceps, with oval jaws, coated, STERILE 
working length 230 cm, for single use, sterile,
package of 10, for use with flexible endoscopes
with working channels as of diameter 2.8 mm

Grasping Forceps




110366-10

Grasping Forceps Rat Tooth Type, STERILE 
diameter 2.4 mm, working length 210 cm, sterile,
for single use, package of 10, for use with flexible
endoscopes with working channels as of diameter
2.8 mm

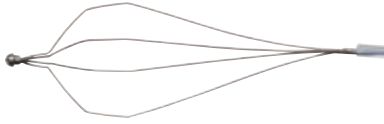


110346-10


Grasping Forceps Pelican Type, STERILE 
with large opening angle, diameter 2.4 mm,
working length 210 cm, sterile, for single use,
package of 10, for use with flexible endoscopes
with working channels as of diameter 2.8 mm

For reusable flexible instruments see the
Veterinary Endoscopy: Small Animals catalog.

Baskets




110406-10

Stone Basket, stainless steel, STERILE 
with tip, diameter 2.4 mm, opening width 30 mm,
working length 230 cm, sterile, for single use,
package of 10, for use with flexible endoscopes
with working channels as of diameter 2.8 mm




110416-10

Stone Basket, nitinol, STERILE 
without tip, diameter 2.4 mm, opening width 30 mm,
working length 230 cm, sterile, for single use,
package of 10, for use with flexible endoscopes
with working channels as of diameter 2.8 mm

Cytology Brush



110244-10

Cytology Brush, STERILE 
diameter 2.4 mm, working length 230 cm,
sterile, for single use, package of 10, for use with
flexible endoscopes with working channels as of
diameter 2.8 mm

Reusable instruments for use with Multi-Purpose Videoendoscope 60714PKSK/60714NKSK

TWEDT Semirigid Foreign Body Retrieval Forceps



Designed for passage alongside an endoscope, the TWEDT semirigid foreign body retrieval forceps features stronger, larger jaws than traditional flexible forceps which are passed down the working channel of the endoscope. Stronger grasping power is ideal for grasping foreign bodies – including lodged bones or round, smooth objects like stones.



60370FB

TWEDT Foreign Body Forceps, double action jaws, jaws 30 mm, jaw opening 3 cm, for tracheal, esophageal and gastric foreign body removal, positioned parallel to an esophago-gastroscope, length 70 cm

Extra Large Foreign Body Baskets



60278FK

Foreign Body Basket, reusable, opening 14 x 10 cm, with 6 wires, diameter 2.4 mm, working length 200 cm



60185FK

Foreign Body Basket, reusable, twisted, with 4 wires, length of basket 70 mm, diameter 1.8 mm, working length 200 cm

Cleaning and Sterilization Accessories

Cleaning and Disinfection Basin



- 60647V **Cleaning and Disinfection Basin**, 30 l, with outflow valve, for the manual cleaning and disinfection of videoendoscopes, external dimensions (w x d x h) in mm: 615 x 400 x 220 including:
Soak Basin
Wire Tray
Lid

Single-Use Cleaning Brush



- 110952-50 **Cleaning Brush**, with double-sided brush, length 250 cm, brush diameter 3.2 mm, unsterile, for single use, package of 50, for use with flexible endoscopes with working channel diameters 2.6-3 mm

Single-Use Valve Brush



- 110922-100 **Valve Brush**, double-sided, brush diameters 10 mm and 5 mm, brush lengths 33 mm and 20 mm, with thumb ring for brushing the valve seat, unsterile, for single use, package of 100, for use with flexible endoscopes

Check out our schedule of upcoming hands-on training courses at <http://go.karlstorz.com/eventsVET>



KARL STORZ

Videoscope Repair Exchange Service Program

The KARL STORZ repair exchange in advance program revolutionizes traditional service models by combining our pre-ship delivery program and technology upgrades at no additional cost. By using KARL STORZ service engineers, genuine KARL STORZ parts and proprietary procedures, we ensure your videoscope will continue to perform to the same standards as the day that it was purchased. Repair exchange videoscopes uphold the original KARL STORZ quality and performance standards, eliminating the need to purchase a new device to ensure peak performance.

New Product Performance

All performance standards used in manufacturing and quality assurance testing of repair exchange videoscopes are identical to those used in manufacturing new KARL STORZ videoscopes. KARL STORZ does not provide any components to third parties.

Pre-Ship Program

This unique program significantly reduces downtime and the potential for cancelled cases by shipping a replacement videoscope as quickly as possible.

Technology Upgrades

Technology upgrades at no additional cost help manage obsolescence while eliminating the need to purchase a new device to ensure peak performance.

New Comprehensive Warranty

Every repair exchange videoscope comes with a NEW comprehensive two-year warranty.

No Need For Loaners

The repair exchange program provides a more efficient and cost-effective alternative to a loaner program which is subject to both time and cost inefficiencies. It eliminates the logistics in requesting, keeping track of, and returning a loaner plus it relinquishes you from the liability of loss or damage.

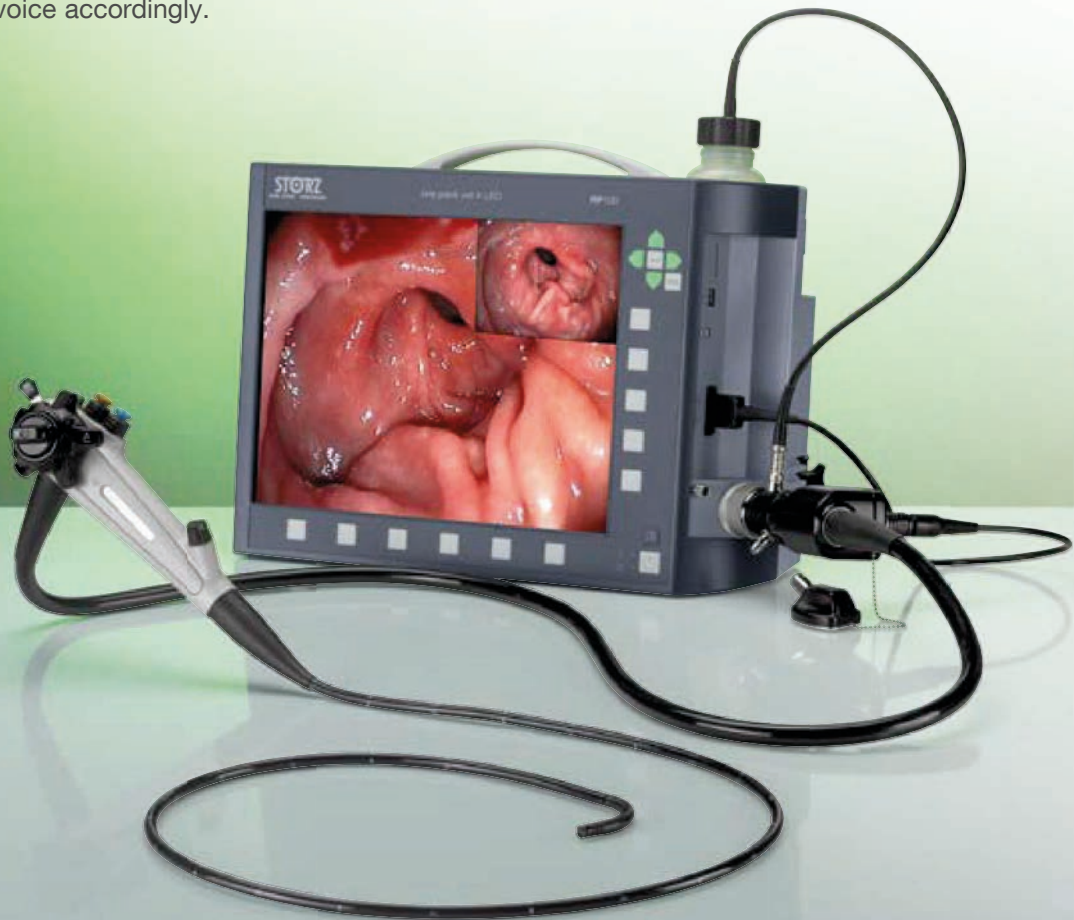
Long-Term Financial Dividends

The repair exchange program will maintain your videoscope at its original specifications while eliminating unforeseen capital outlays.

Protect your investment and minimize downtime with fast replacement service and a NEW 2-year manufacturer's warranty

How it Works

1. If you have a damaged KARL STORZ product, call your local KARL STORZ distributor.
2. We will ship your exchange product as soon as possible.
3. Your account will be invoiced for an exchange according to the policy of your local KARL STORZ distributor.
4. Upon receipt of your exchange product, carefully re-package your damaged product and return it within five (5) business days.
5. Upon receipt of your damaged KARL STORZ product, a KARL STORZ technician will carefully inspect it to determine the nature and extent of damage, and adjust your invoice accordingly.



More than
75
Years

*Shaping the Future
of Endoscopy with you*

STORZ
KARL STORZ—ENDOSKOPE

THE DIAMOND STANDARD

KARL STORZ SE & Co. KG
Dr.-Karl-Storz-Straße 34, 78532 Tuttlingen/Germany
Postbox 230, 78503 Tuttlingen/Germany
Phone: +49 7461 708-0
Fax: +49 7461 708-105
E-Mail: vet@karlstorz.com

www.karlstorz.com



96182030 VET-L 35 10.1 06/2023/EW-E